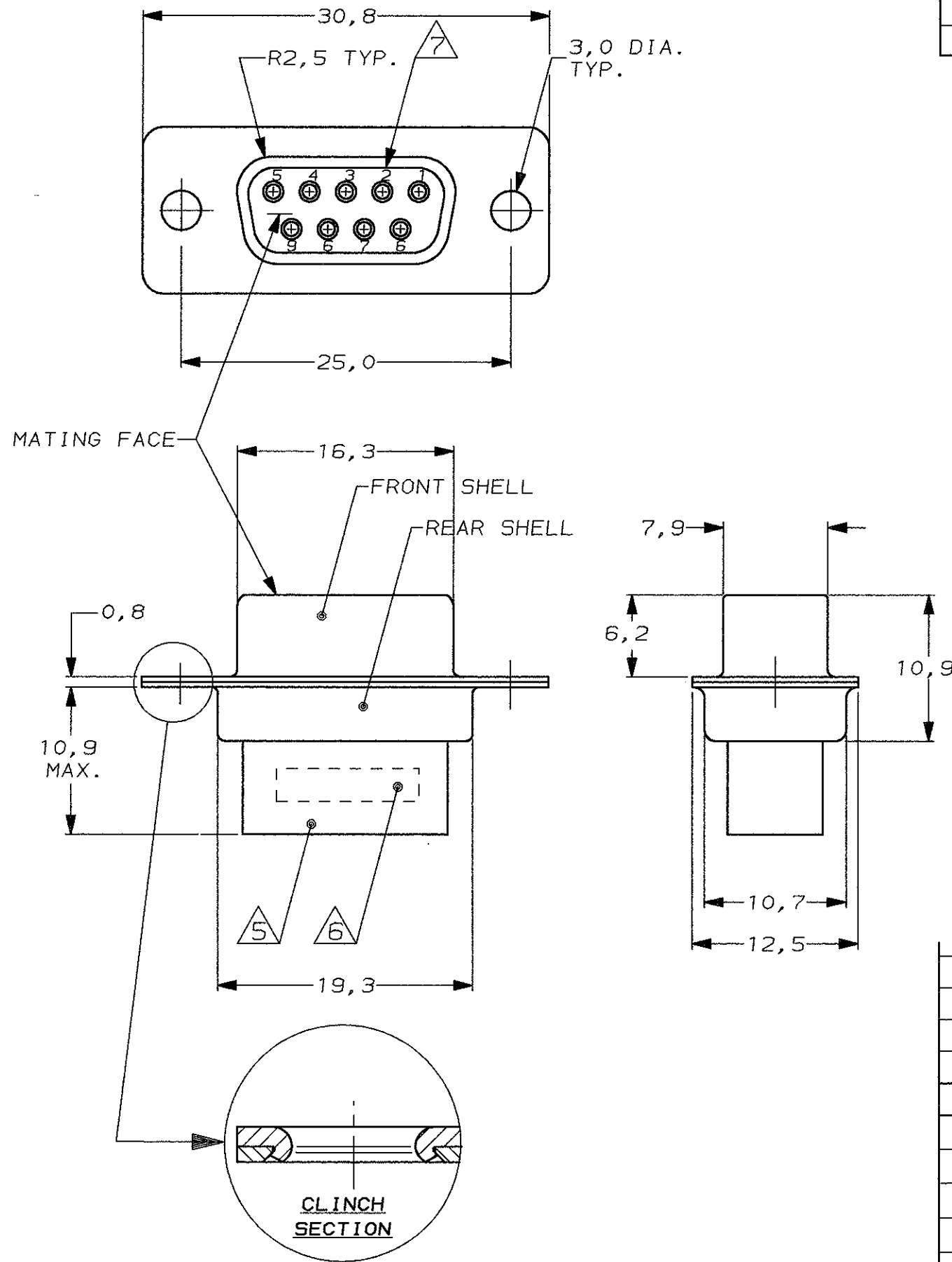
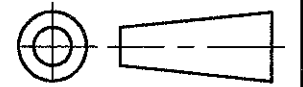


DO NOT SCALE
DIMENSIONS IN mm

METRIC

THIRD ANGLE
PROJECTION



NOTES:

- 1 THIS RECEPTACLE ACCEPTS SIZE 20 REC. CONTACTS.
- 2 MAXIMUM WIRE INSULATION RECOMMENDED FOR USE WITH THIS RECEPTACLE IS 1,73 DIA. MAX..
- 3 RETENTION TINES ARE AN INTEGRAL PART OF INSERT.
- 4 FOLLOWING INSERTION/REMOVAL TOOLS ARE RECOMMENDED FOR USE WITH THESE CONNECTORS:
 32-28AWG/28-24AWG CONTACTS
 91067-3 INSERTION/REMOVAL
 726363-1 INSERTION ONLY
 24-20AWG CONTACTS
 726363-1 INSERTION ONLY
 726364-1 REMOVAL ONLY
- 5 INSERTS: GLASSFILLED SELF-EXTINGGUISHING PBT, COLOR BLACK.
- 6 AMP DATE CODE, AMP PART NUMBER, INK STAMPED.
- 7 RAISED CAVITY IDENTIFICATION 0,8 HIGH.

PLATING FRONT SHELL	PLATING REAR SHELL	MATERIAL SHELLS	PARTNUMBER
BRIGHT TIN	BRIGHT TIN	STEEL	164531-4
ZINC	BRIGHT TIN	STEEL	164531-3
-	-	-	-
ZINC	ZINC	STEEL	164531-1
CUSTOMER DRAWING FOR REFERENCE ONLY WILL NOT BE UPDATED © COPYRIGHT 19-- BY AMP HOLLAND B.V. ALL INTERNATIONAL RIGHTS RESERVED. AMP PRODUCTS MAY BE COVERED BY U.S. AND FOREIGN AND/OR PATENTS PENDING. THIS DRAWING IS UNPUBLISHED RELEASED FOR PUBLICATION ,19--			
			AMP HOLLAND B.V. 's-Hertogenbosch, The Netherlands.
NAME H EH-0314-99 D.K. W.S. 11 FEB 99			9 POS HDP-20 RECEPTACLE CONNECTOR SIZE 1
LTR. REVISION RECORD DR. CHK. DATE		DWG.No. C-164531 REV.LTR. H SHEET 1 OF 1	
DR.: D. KESSLER DATE: 11 FEB 99		APP.: W. SOOMERS DATE: -	