

**solid carbide metal circular saw blade, finely toothed, shape A**  
for universal use up to 1300 N/mm<sup>2</sup> in thin-walled workpieces and small cutting depths on CNC machines



**Application**

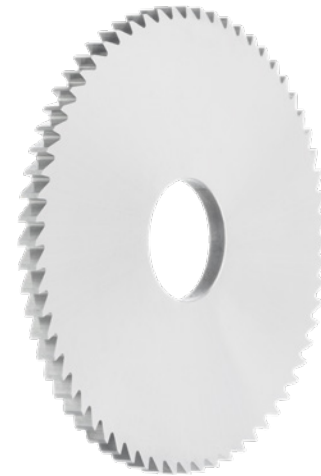
For making saw cuts in thin-walled workpieces and shallow cutting depths in the material groups of steel, stainless steel, cast iron and non-ferrous metals.

**Version**

- precision-ground metal circular saw blade with tooth shape A, fine-toothed, hollow ground on side

**Advantage**

- innovative cutting geometry for very high dimensional accuracy, process reliability and chip removal
- high-quality cutting material for very high service life requirements
- universal use in numerous applications



Application	Steel (N/mm <sup>2</sup> )			Stainless steel		Alu		Brass		Bronze		Plas-tics	Graphite G(C)FK	GG(G) GjMW	Titan-alloy	Nickel-alloy	Super-alloy	Hard mat.	
	<700	<1000	<1300	marten.	austen.	short	long	short	long	short	long							<55 HRC	<65 HRC
	135	95	45	50	60			350	350	250				120	50	50	40		

<b>Art. No.</b>	<b>14020 127</b>
<b>Tooth shape</b>	A
<b>Cutting material</b>	VHM
<b>Thickness of cutting edge</b>	1.2 mm
<b>Tolerance of cutting edge diameter</b>	j15
<b>Tolerance of cutting edge thickness</b>	j11
<b>Tolerance of hole diameter</b>	H6
<b>Cutting edge diameter</b>	30 mm
<b>Bore diameter</b>	8 mm
<b>Number of teeth</b>	48 PCS
<b>DIN</b>	1837
<b>Form</b>	A

**EAN-Code**

4050293441666