

HID-HeavyDuty BSN semi-parallel for SON/ CDO/MH/HPI

HID-HeavyDuty BSN 400 L33 230V 50Hz HD3-166

Encapsulated electromagnetic copper/iron ballasts for use with an external semi-parallel ignitor for CDM, CDO, MH, HPI (Plus) and SON lamps (no ignitor needed for SON-I lamps)

HID-HeavyDuty BSN semi-parallel for SON/CDO/MH/HPI

Product data

• General Characteristics

Rated Number of Lamps	1 piece
Rated Ballast-Lamp Power	400
Rated Lamptype	SON/HPI
Application code	L33
Line Voltage	230 V
Line Frequency	50 Hz
Design	HD3-166

• Operating Characteristics

Input current with PF-correct.	2.20 A
Input current w/o PF-correct.	4.45 A
Mains voltage safety (AC)	-10%/+10%
Mains voltage performance (AC)	-8%/+6%
PowerFactor 100% output power	0.87 -
PowerFactor w/o PF compens.	0.40 -
Power losses gear	29.0 W

• Wiring Characteristics

Connector type	Screw
Striplength	7.0 mm
Wcs Ballast contacts	0.70-6.00 mm2

• Temperature Characteristics

Active temperature protection	No
-------------------------------	----

T-storage	-30 (min), 130 (max) C
T-winding maximum (tw)	130 (max) C
Delta-T normal conditions	70 C

• Approval & Application Chars

CE marking	Yes
ENEC certificate	Yes

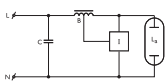
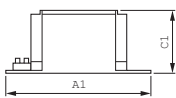
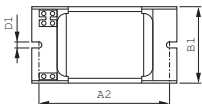
• Product Dimensions

Length A1	166.0 mm
Fixing Hole Distance	147.5 mm
Length A2	
Width B1	102.0 mm
Height C1	84.0 mm
Fixing Hole Diameter D1	6.2 mm

• Product Data

Order code	913623090426
Full product code	913623090426
Full product name	BSN 400 L33 230V 50Hz HD3-166
Order product name	BSN 400 L33 230V 50Hz HD3-166
Pieces per pack	1
Packing configuration	4
Packs per outerbox	4
Bar code on pack - EAN1	8711500919748
Bar code on outerbox - EAN3	8711500934840
Logistic code(s) - 12NC	913623090426
Net weight per piece	4.000 kg

Dimensional drawing



Product	A1 (Norm)	A2 (Norm)	B1 (Norm)	C1 (Norm)	D1 (Norm)
BSN 400 L33 230V 50Hz HD3-166	166.0	147.5	102.0	84.0	6.2



© 2011 Koninklijke Philips Electronics N.V.
All rights reserved.

Specifications are subject to change without notice. Trademarks are the property of Koninklijke Philips Electronics N.V. or their respective owners.

www.philips.com/lighting

2011, June 7
data subject to change