

MATERIALS AND FINISHES:

SMA JACK BULKHEAD CONNECTOR:

BODY, CRIMP TUBE, JAM NUT: BRASS
PLATED GOLD

CENTER CONTACT: BERYLLIUM COPPER
PLATED GOLD

INSULATOR: PTFE

LOCK WASHER: PHOSPHOR BRONZE
PLATED GOLD

MHF® I LK CONNECTOR

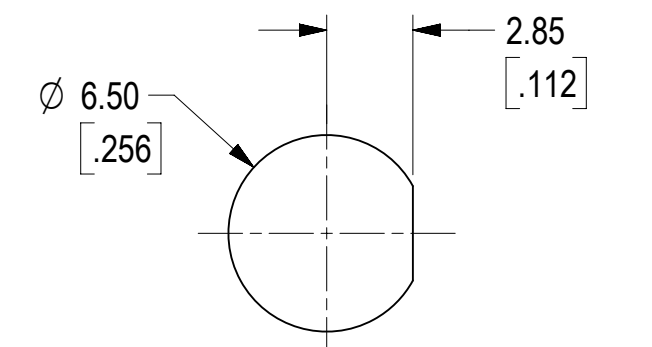
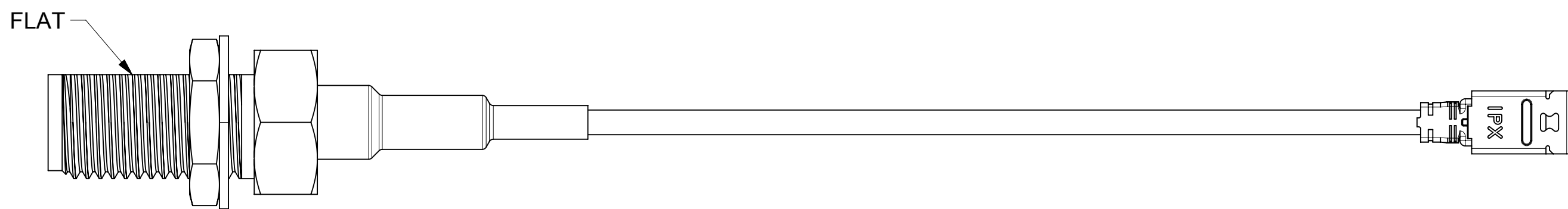
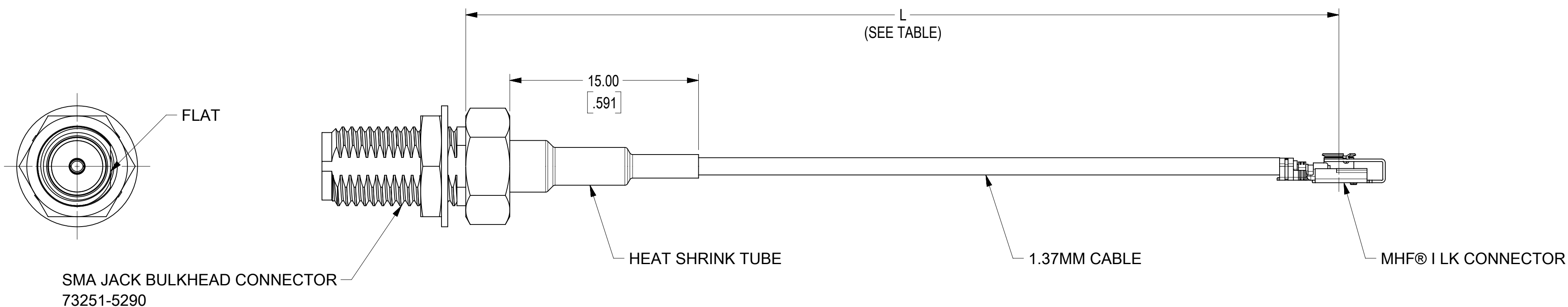
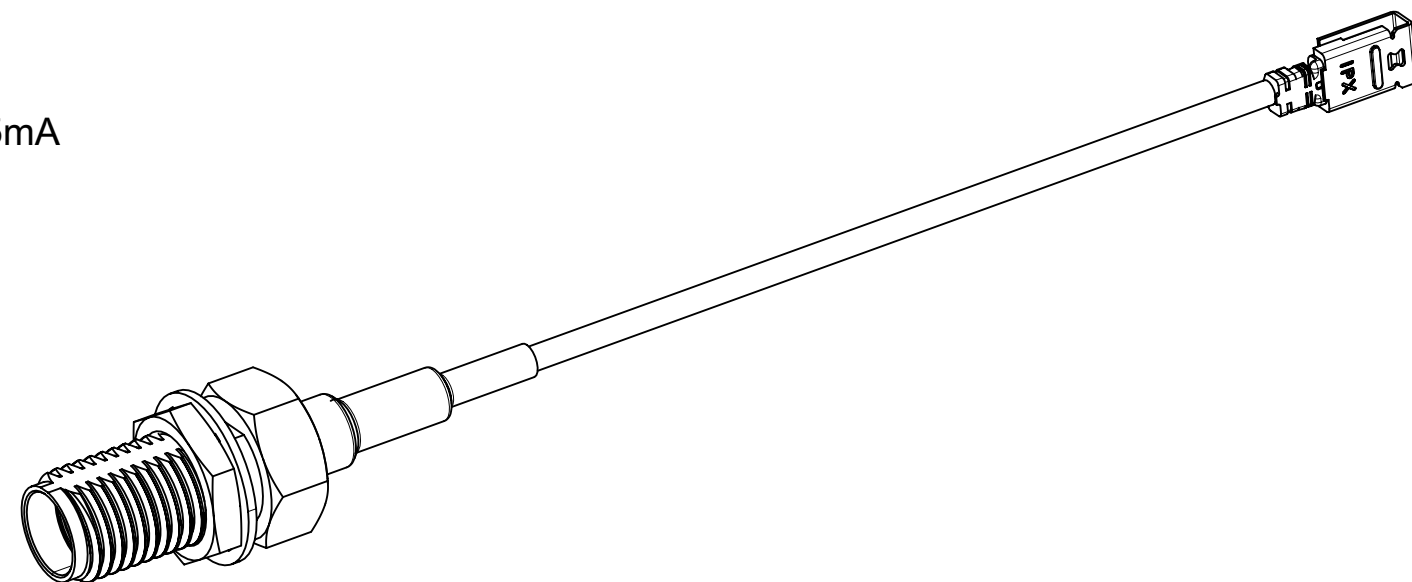
CABLE: 1.37MM CABLE

HEAT SHRINK TUBE: PE

PERFORMANCE REQUIREMENTS

FREQUENCY RANGE: 0~6GHz
IMPEDANCE: 50 Ω
WITHSTAND VOLTAGE(AC): 350V @0.5mA
CONTINUITY: 100% TEST

PACKAGING BY PLASTIC BAG



RECOMMENDED MOUNTING HOLE

73230-6125	2.000±.118	50.80±3.00
73230-6124	4.000±.197	101.60±5.00
73230-6123	6.000±.197	152.40±5.00
73230-6122	8.000±.197	203.20±5.00
73230-6121	10.000±.197	254.00±5.00
73230-6120	12.008±.197	305.00±5.00

PART NO.	IN	MM
	L	

DOCUMENT STATUS	P1	RELEASE DATE	2023/07/13	01:49:54
-----------------	----	--------------	------------	----------

FUNCTIONAL SYMBOLS										THIS DRAWING CONTAINS INFORMATION THAT IS PROPRIETARY TO MOLEX ELECTRONIC TECHNOLOGIES, LLC AND SHOULD NOT BE USED WITHOUT WRITTEN PERMISSION									
DIMENSION UNITS		SCALE		CURRENT REV DESC: ADD NEW PN.73230-6121, -6122,-6123,-6124,-6125 PER EWR#: 15299-D															
MM/INCH		4:1		GENERAL TOLERANCES (UNLESS SPECIFIED)															
ANGULAR TOL		± °		EC NO: 756278						CA, SMA JACK BULKHEAD TO MHF® ? LK WITH DIA 1.37MM CABLE,50 OHMS,EWR#: 15299-A									
4 PLACES		±		DRWN: YHUANG11						2023/07/07									
3 PLACES		±		CHK'D: JCHEN108						2023/07/12									
2 PLACES		±		APPR: LCHEN03						2023/07/13									
1 PLACE		±		INITIAL REVISION:						PRODUCT CUSTOMER DRAWING									
0 PLACES		±		DRWN: YHUANG11						DOCUMENT NUMBER									
DRAFT WHERE APPLICABLE MUST REMAIN WITHIN DIMENSIONS		THIRD ANGLE PROJECTION		DRAWING		SERIES		MATERIAL NUMBER		CUSTOMER		DOC TYPE		DOC PART		REVISION			
				C-SIZE		73230		SEE TABLE		GENERAL MARKET		PSD		000		A2			
																SHEET NUMBER			
																1 OF 1			