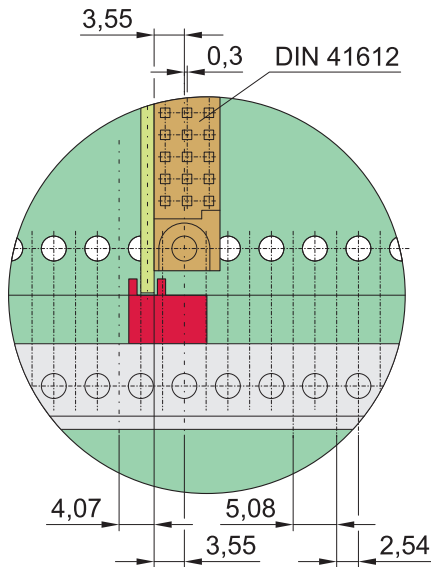
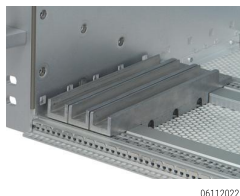
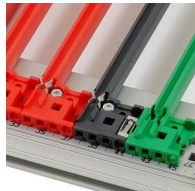
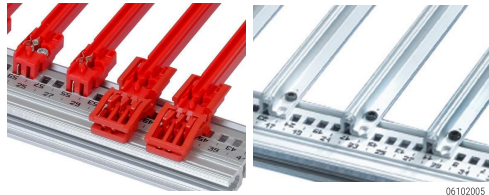


# Subracks – EuropacPRO

## GUIDE RAILS



Front view: position of guide rails to connector (EN 60603-2/ DIN 41612)



Guide rails form the interface between the subrack mechanics and the sub-assemblies (PCBs, plug-in units, frame-type plug-in units, ...).

Guide rails for standard applications are 2 HP wide. Guide rails with coding (e.g. for CompactPCI or VME64bus applications) are 4 HP wide.

There are groove widths of 2 mm and 2.5 mm.

The guide rails are clipped into the rectangular cut-outs of the horizontal rails. They can additionally be bolted to the horizontal rail (type H only) for higher shock and vibration requirements.

The printed HP markings on the horizontal rail (28 HP and above) allow the rails to be fitted in the correct position easily (position of sub-assembly = "number in viewing window" or in front of the arrow marking on the guide rails).

### Applications for guide rails

For plug-in units and frame-type plug-in units (with front panels) (standard type)

For plug-in units and frame type plug-in units or for PCBs without their own front panel (accessory type or robust version)

For CompactPCI or VME64x plug-in units (type IEEE with coding; frame-type plug-in units cannot be fitted)

For plug-in drive unit modules or PCBs in 4.4" (111.7 mm) height (type 4.4")

Rugged guide rails to accommodate conduction cooled assembly (CCA) adaptor

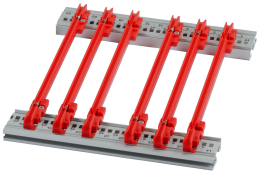
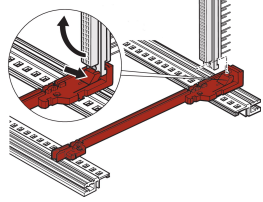
Accessories:

- ESD clip
- Keying/coding pegs
- Board locking




# Subracks – EuropacPRO

## GUIDE RAILS FOR PLUG-IN UNITS AND MODULES, ONE-PIECE, GROOVE WIDTH 2 MM AND 2.5 MM

### ORDER INFORMATION

			For plug-in units and frame type plug-in units Type: <b>Standard</b>		Type <b>Standard</b> , with DIN connector fixing
<b>Assembly</b> - can be clipped into Al extruded horizontal rails - can be clipped into 1.5 mm thick plates  <b>Storage temperature</b> from -40 °C ... 130 °C  <b>Colors of Plastic material</b> red: RAL 3000 grey: RAL 7016					
			up to 220 mm length, PC, UL 94 V-0; from 280 mm length, multi-piece, end piece PC, UL 94 V-0, central section Al extrusion	PC, UL 94 V-0	PBT, UL 94 V-0, red, connector is clipped directly onto the guide rails; for euroboards only, 100 x 160 mm or 100 x 220 mm
<b>Board length</b>	<b>Groove width</b>	<b>Colour</b>			
mm	mm	mm	PU 10 pieces <sup>2)</sup>	1 piece (SPQ 50) <sup>1)</sup>	1 pair (SPQ 10) <sup>1)</sup>
70	2	red	–	<b>34568-230</b>	–
70	2	grey	–	–	–
160	2	red	<b>24568-361</b>	<b>64568-001</b>	<b>64560-074</b>
220	2	red	<b>24568-362</b>	<b>64568-002</b>	<b>64560-075</b>
280	2	red / silver	<b>24568-379</b>	–	–
340	2	red / silver	<b>24568-380</b>	–	–
160	2.5	red	–	<b>64568-096</b>	–
220	2.5	red	–	<b>64568-098</b>	–

### Accessories

Retention screw, PU 100 pieces; Torque max. 0.2 Nm		<b>24560-141</b>		<b>24560-141</b>		<b>24560-141</b>
ESD clip, PU 50 pieces		<b>24560-255</b>		<b>24560-255</b>		<b>24560-255</b>

1) SPQ (standard pack quantity): Part number includes 1 piece, but delivery is exclusively made in standard pack quantity (SPQ); please order at least the SPQ quantity or a multiple

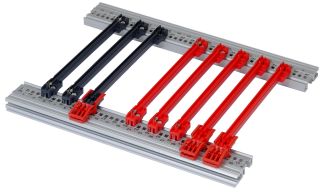


2) Part no. includes one packing unit (PU); delivery is exclusively made in PU

Description of accessories see from page 6.43

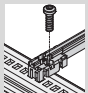



# Subracks – EuropacPRO

## GUIDE RAILS TYPE "ACCESSORY", ONE-PIECE, GROOVE WIDTH 2 MM AND 2.5 MM

### ORDER INFORMATION

			Guide railsType <b>Accessory</b>		Guide railsType <b>Accessory strengthened</b>		for heavy modules, Al extrusion, silver, robust version
<b>Assembly</b> - can be clipped into Al extruded - horizontal rails - can be clipped into 1.5 mm thick plates  <b>Storage temperature</b> from -40 °C ... +130 °C  <b>Colors of Plastic Material</b> red: RAL 3000 grey: RAL 7016			 up to 280 mm length, PC, UL 94 V-0; > 280 mm length, multi-piece, end piece PC, UL 94 V-0, middle section Al extrusion		 PC, UL 94 V-0, red; support beam of guide rails adds to strengthening		 Al extrusion; is screwed to horizontal rail "heavy" with retention screws
Board length mm	Groove width mm	Colour	PU 10 pieces <sup>2)</sup>	1 piece (SPQ 50)	1 piece (SPQ 50)	1 piece (SPQ 50)	1 piece (SPQ 10) <sup>1)</sup>
100	2	red	-	<b>64568-082</b>	-	-	-
160	2	red	<b>24568-363</b>	<b>64568-005</b>	<b>64568-076</b>	-	-
160	2	grey/silver	-	<b>64568-055</b>	-	-	<b>34562-881</b>
220	2	red	<b>24568-364</b>	<b>64568-006</b>	<b>64568-078</b>	-	-
220	2	grey/silver	-	<b>64568-166</b>	-	-	<b>34562-882</b>
280	2	red/silver	<b>24568-381</b>	-	<b>64568-080</b>	-	<b>34562-883</b>
340	2	red/silver	<b>24568-382</b>	-	-	-	<b>34562-884</b>
400	2	red/silver	-	-	-	-	<b>34562-885</b>
160	2.5	red/silver	-	<b>64568-100</b>	<b>64568-118</b>	<b>34564-881</b>	-
220	2.5	red/silver	-	<b>64568-102</b>	<b>64568-119</b>	<b>34564-882</b>	-
280	2.5	red/silver	-	-	<b>64568-120</b>	<b>34564-883</b>	-
340	2.5	silver	-	-	-	<b>34564-884</b>	-
400	2.5	silver	-	-	-	<b>34564-885</b>	-

### Accessories

Retention screw, PU 100 pieces; torque max. 0.2 Nm		<b>24560-141</b>		<b>24560-141</b>		<b>24560-141</b>		<b>24560-157</b>
ESD clip, PU 50 pieces		<b>24560-255</b>	<b>24560-255</b>	<b>24560-255</b>	<b>24560-255</b>	<b>24560-255</b>	-	-
Board locking C, red, PU 10 pieces		<b>24560-377</b>	<b>24560-377</b>	<b>24560-377</b>	<b>24560-377</b>	<b>24560-377</b>	-	-
Board handle C, red, PU 10 pieces		<b>24560-378</b>	<b>24560-378</b>	<b>24560-378</b>	<b>24560-378</b>	<b>24560-378</b>	-	-
Identification strips for board handle, red, PU 1 sheet = 438 pieces		<b>60817-228</b>	<b>60817-228</b>	<b>60817-228</b>	<b>60817-228</b>	<b>60817-228</b>	-	-
Coding see page			6.43					-

1) SPQ (standard pack quantity): Part number includes 1 piece, but delivery is exclusively made in standard pack quantity (SPQ); please order at least the SPQ quantity or a multiple


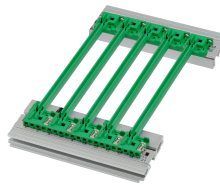

2) Part no. includes one packing unit (PU); delivery is exclusively made in PU

Description of accessories see from page 6.43

# Subracks – EuropacPRO

## GUIDE RAILS FOR COMPACTPCI, VME64X WITH CODING, 4.4" PCBs, GROOVE WIDTH 2 MM AND 2.5 MM

### ORDER INFORMATION

			Type with Coding, for CompactPCI, VME64x application. In accordance with IEEE 1101.10 and IEC 60297-3-103		Type with Coding, 0.1" OFFSET for power supply units. In accordance with IEEE 1101.10 and IEC 60297-3-103		Type. 4.4" PCBs	
<b>Assembly</b> - can be clipped into Al extruded horizontal rails - can be clipped into 1.5 mm thick plates  <b>Storage temperature</b> from -40 °C ... 130 °C  <b>Colors of Plastic Material</b> red: RAL 3000 grey: RAL 7016 green: RAL 6024			 One-piece for groove width 2 mm, PC, UL 94 V-0; multi-piece at groove width 2,5 mm, end-piece PC, UL 94 V-0, center piece Al profile PC, UL 94 V-0 <small>124624426</small>		 PC, UL 94 V-0, for installation of power supplies in CompactPCI systems or plug-in units with SMD placement <small>124675998</small>		 One-piece, PBT, UL 94 V-0; for 4.4" PCBs or drive unit modules <small>0610409</small>	
Board length	Groove width	Colour	PU 10 pieces	1 piece (SPQ 50) <sup>1)</sup>	PU 10 pieces	1 piece (SPQ 50) <sup>1)</sup>	PU 10 pieces	1 piece (SPQ 50) <sup>1)</sup>
mm	mm	mm						
70	2	red	<b>24568-357</b>	<b>64568-085</b>	–	–	–	–
70	2	grey	<b>24568-360</b>	<b>64568-086</b>	–	–	–	–
160	2	red	<b>24568-356</b>	<b>64568-089</b>	–	–	<b>24560-361</b>	<b>64560-143</b>
160	2	grey	<b>24568-358</b>	<b>64568-090</b>	–	–	–	–
160	2	green	–	–	<b>24568-359</b>	<b>64568-071</b>	–	–
220	2	red	–	<b>64568-091</b>	–	–	<b>24560-362</b>	<b>64560-144</b>
220	2	grey	–	<b>64568-092</b>	–	–	–	–
220	2	green	–	–	–	<b>64568-072</b>	–	–
160	2.5	red	–	<b>64568-109</b>	–	–	–	<b>64560-145</b>
160	2.5	grey	–	<b>64568-110</b>	–	–	–	–
220	2.5	red	–	<b>64568-111</b>	–	–	–	<b>64560-146</b>
220	2.5	grey	–	<b>64568-112</b>	–	–	–	–
280	2.5	red / silver	<b>24568-331</b>	–	–	–	–	–
280	2.5	grey / silver	<b>24568-341</b>	–	–	–	–	–
340	2.5	red / silver	<b>24568-332</b>	–	–	–	–	–
340	2.5	grey / silver	<b>24568-342</b>	–	–	–	–	–

### Accessories

ESD clip, PU 50 pieces	<b>24560-255</b>	<b>24560-255</b>	–	–	–	–
ESD clips, for alignment pin, PU 50 pieces	<b>24560-256</b>	<b>24560-256</b>	<b>24560-256</b>	<b>24560-256</b>	–	–
Retention screw, PU 100 pieces; torque max. 0.2 Nm	<b>24560-141</b>	<b>24560-141</b>	<b>24560-141</b>	<b>24560-141</b>	<b>24560-158</b>	<b>24560-158</b>
Coding peg, PU 100 pieces	<b>20817-501</b>	<b>20817-501</b>	<b>20817-501</b>	<b>20817-501</b>	–	–

1) SPQ (standard pack quantity): Part number includes 1 piece, but delivery is exclusively made in standard pack quantity (SPQ); please order at least the SPQ quantity or a multiple

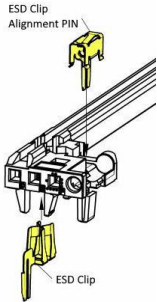
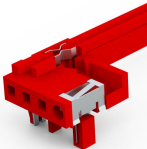
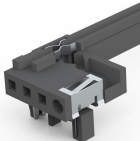
2) Part no. includes one packing unit (PU); delivery is exclusively made in PU

Description of accessories see from page 6.43



# Subracks – EuropacPRO

## GUIDE RAILS FOR COMPACTPCI, VME64X WITH CODING, PREASSEMBLED ESD CLIPS, GROOVE WIDTH 2 MM

### ORDER INFORMATION

				Type with Coding, for CompactPCI, VME64x application. In accordance with IEEE 1101.10 and IEC 60297-3-103 ESD CLIPS preassembled	
				red colour	grey colour
<b>Assembly</b> - can be clipped into Al extruded horizontal rails - can be clipped into 1.5 mm thick plates				One-piece for groove width 2 mm, PC, UL 94 V-0;  ESD Clip and ESD Clip for Alignment PIN preassembled	One-piece for groove width 2 mm, PC, UL 94 V-0;  ESD Clip and ESD Clip for Alignment PIN preassembled
<b>Storage temperature</b> from -40 °C ... 130 °C					
<b>Colors of Plastic Material</b> red: RAL 3000 grey: RAL 7016				Picture shows 160mm long guide rail, mounting position bottom	Picture shows 160mm long guide rail, mounting position bottom
<b>Remark:</b> At least one guide rail with ESD clips is required per slot, to avoid electrostatic discharges				PU 10 pieces	PU 10 pieces
Board length	Groove width	Colour	Mounting Position		
mm	mm	mm			
70	2	red	bottom	<b>24568-855</b>	
70	2	red	top	<b>24568-853</b>	
160	2	red	bottom	<b>24568-847</b>	
160	2	red	top	<b>24568-850</b>	
70	2	grey	bottom		<b>24568-856</b>
70	2	grey	top		<b>24568-854</b>
160	2	grey	bottom		<b>24568-848</b>
160	2	grey	top		<b>24568-851</b>

### Accessories

Retention screw, PU 100 pieces; torque max. 0.2 Nm		<b>24560-141</b>	<b>24560-141</b>
Coding peg, PU 100 pieces		<b>20817-501</b>	<b>20817-501</b>


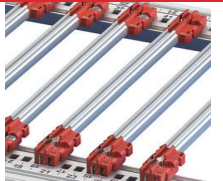


2) Part no. includes one packing unit (PU); delivery is exclusively made in PU

Description of accessories see from page 6.43

# Subracks – EuropacPRO

## GUIDE RAILS, MULTI-PIECE, GROOVE WIDTH 2 MM

### ORDER INFORMATION

			standard type		Accessories type		For 4.4" PCBs			
<b>PCBs:</b> Fixed lengths for 160, 220, 280, 340 mm; length 1000 mm for special dimensions  <b>Mounting:</b> pluggable into horizontal rails  <b>Storage temperature :</b> End piece -40°C ... +130°C PVC profile 0°C ... +60°C			 06106004 end piece, PC, UL 94 V-0, middle section Al extrusion		 06106005 end piece, PBT, UL 94 V-0, middle section plastic extrusion (PVC, RAL 7035)		 06106006 end piece, PC, UL 94 V-0, middle section Al extrusion		 06106006 end piece, PBT, UL 94 V-0, middle section plastic extrusion (PVC, RAL 7035)	
Description	Length mm	Groove width mm	1 piece (SPQ 10) <sup>1)</sup>	1 piece (SPQ 10) <sup>1)</sup>	1 piece (SPQ 10) <sup>1)</sup>	1 piece (SPQ 10) <sup>1)</sup>	1 piece (SPQ 10) <sup>1)</sup>	1 piece (SPQ 10) <sup>1)</sup>		
End piece, red, 1 pair		2	<b>64568-004</b>	<b>64568-004</b>	<b>64568-008</b>	<b>64568-008</b>	<b>64560-057</b>	<b>64560-057</b>		
Al extrusion, for 160mm board length	95	2	<b>34560-891</b>	<b>34564-891</b>	<b>34560-891</b>	<b>34564-891</b>	<b>34560-891</b>	<b>34564-891</b>		
Al extrusion, for 220 mm board length	155	2	<b>34560-892</b>	<b>34564-892</b>	<b>34560-892</b>	<b>34564-892</b>	<b>34560-892</b>	<b>34564-892</b>		
Al extrusion, for 280 mm board length	215	2	<b>34560-893</b>	<b>34564-893</b>	<b>34560-893</b>	<b>34564-893</b>	<b>34560-893</b>	<b>34564-893</b>		
Al extrusion, for 340 mm board length	275	2	<b>34560-894</b>	–	<b>34560-894</b>	–	<b>34560-894</b>	–		
Al extrusion, for any board length	1000	2	<b>34560-900</b>	<b>34564-900</b>	<b>34560-900</b>	<b>34564-900</b>	<b>34560-900</b>	<b>34564-900</b>		
Description	Length mm	Groove width mm	1 piece (SPQ 10) <sup>1)</sup>	1 piece (SPQ 10) <sup>1)</sup>	1 piece (SPQ 10) <sup>1)</sup>	1 piece (SPQ 10) <sup>1)</sup>	1 piece (SPQ 10) <sup>1)</sup>	1 piece (SPQ 10) <sup>1)</sup>		
End piece, red, 1 pair		2.5	<b>64568-014</b>	–	<b>64568-018</b>	–	–	–		
Al extrusion, for 160 mm board length	95	2.5	<b>34562-813</b>	–	<b>34562-813</b>	–	–	–		
Al extrusion, for 220 mm board length	155	2.5	<b>34562-814</b>	–	<b>34562-814</b>	–	–	–		
Al extrusion, for 280 mm board length	215	2.5	<b>34562-815</b>	–	<b>34562-815</b>	–	–	–		
Al extrusion, for 340 mm board length	275	2.5	<b>34562-816</b>	–	<b>34562-816</b>	–	–	–		
Al extrusion, for any board length	1000	2.5	<b>34562-822</b>	–	<b>34562-822</b>	–	–	–		

### Accessories

ESD clip, PU 50 pieces	<b>24560-255</b>	<b>24560-255</b>	<b>24560-255</b>	<b>24560-255</b>	–	–
Retention screw, PU 100 pieces; torque max. 0.2 Nm	<b>24560-141</b>	<b>24560-141</b>	<b>24560-141</b>	<b>24560-141</b>	<b>24560-158</b>	<b>24560-158</b>
Board locking C, red, PU 10 pieces	–	–	<b>24560-377</b>	<b>24560-377</b>	–	–
Board handle C, red, PU 10 pieces	–	–	<b>24560-378</b>	<b>24560-378</b>	–	–
Identification strips for board handle, red, PU 1 sheet = 438 pieces	–	–	<b>60817-228</b>	<b>60817-228</b>	–	–
Coding see page	–	–	see page 6.43		–	–

1) SPQ (standard pack quantity): Part number includes 1 piece, but delivery is exclusively made in standard pack quantity (SPQ); please order at least the SPQ quantity or a multiple

2) Part no. includes one packing unit (PU); delivery is exclusively made in PU

Description of accessories see from page 6.43

### NOTE

Part number in bold face type: ready for despatch within 2 working days  
 Part number in normal type: ready for despatch within 10 working days

# Subracks – EuropacPRO

## GUIDE RAILS, MULTI-PIECE, GROOVE WIDTH 2 MM

### ORDER INFORMATION

			Coding (IEEE) type					
			red		grey		green, 0,1" Offset	
<b>PCBs:</b> Fixed lengths for 160, 220, 280, 340 mm; length 1000 mm for special dimensions <b>Mounting:</b> pluggable into horizontal rails  <b>Storage temperature :</b> End piece -40°C ...+130°C PVC profile 0°C ... +60°C  red = similar RAL 3000, grey = similar RAL 7016, green = similar RAL 6024			 735313686		 135313698		 135313710	
			end piece, PC, UL 94 V-0,middle sectionAl extrusion	end piece, PBT, UL 94 V-0, middle section plastic extrusion (PVC, RAL 7035)	end piece, PC, UL 94 V-0,middle sectionAl extrusion	end piece, PBT, UL 94 V-0, middle section plastic extrusion (PVC, RAL 7035)	end piece, PC, UL 94 V-0,middle sectionAl extrusion	end piece, PBT, UL 94 V-0, middle section plastic extrusion (PVC, RAL 7035)
mm	Groove width mm		1 piece (SPQ 10) <sup>1)</sup>	1 piece (SPQ 10) <sup>1)</sup>	1 piece (SPQ 10) <sup>1)</sup>	1 piece (SPQ 10) <sup>1)</sup>	1 piece (SPQ 10) <sup>1)</sup>	1 piece (SPQ 10) <sup>1)</sup>
End piece, 1 pair	2		<b>64568-093</b>	<b>64568-093</b>	<b>64568-094</b>	<b>64568-094</b>	<b>64568-095</b>	<b>64568-095</b>
Al extrusion, for 160 mm board length	95	2	<b>34560-891</b>	<b>34564-891</b>	<b>34560-891</b>	<b>34564-891</b>	<b>34560-891</b>	<b>34564-891</b>
Al extrusion, for 220 mm board length	155	2	<b>34560-892</b>	<b>34564-892</b>	<b>34560-892</b>	<b>34564-892</b>	<b>34560-892</b>	<b>34564-892</b>
Al extrusion, for 280 mm board length	215	2	<b>34560-893</b>	<b>34564-893</b>	<b>34560-893</b>	<b>34564-893</b>	<b>34560-893</b>	<b>34564-893</b>
Al extrusion, for 340 mm board length	275	2	<b>34560-894</b>	–	<b>34560-894</b>	–	<b>34560-894</b>	–
Al extrusion,for any board length	1000	2	<b>34560-900</b>	<b>34564-900</b>	<b>34560-900</b>	<b>34564-900</b>	<b>34560-900</b>	<b>34564-900</b>
Description	Length mm	Groove width mm	1 piece (SPQ 10) <sup>1)</sup>	1 piece (SPQ 10) <sup>1)</sup>	1 piece (SPQ 10) <sup>1)</sup>	1 piece (SPQ 10) <sup>1)</sup>	1 piece (SPQ 10) <sup>1)</sup>	1 piece (SPQ 10) <sup>1)</sup>
End piece, 1 pair		2.5	<b>64568-093</b>		<b>64568-094</b>		<b>64568-095</b>	
Al extrusion, for 160 mm board length	95	2.5	<b>34562-813</b>	–	<b>34562-813</b>	–	<b>34562-813</b>	–
Al extrusion, for 220 mm board length	155	2.5	<b>34562-814</b>	–	<b>34562-814</b>	–	<b>34562-814</b>	–
Al extrusion, for 280 mm board length	215	2.5	<b>34562-815</b>	–	<b>34562-815</b>	–	<b>34562-815</b>	–
Al extrusion, for 340 mm board length	275	2.5	<b>34562-816</b>	–	<b>34562-816</b>	–	<b>34562-816</b>	–
Al extrusion,for any board length	1000	2.5	<b>34562-822</b>	–	<b>34562-822</b>	–	<b>34562-822</b>	–

### Accessories

ESD clip, PU 50 pieces	<b>24560-255</b>	<b>24560-255</b>	<b>24560-255</b>	<b>24560-255</b>	<b>24560-255</b>	<b>24560-255</b>
ESD clips, for alignment pin, PU 50 pieces	<b>24560-256</b>	<b>24560-256</b>	<b>24560-256</b>	<b>24560-256</b>	<b>24560-256</b>	<b>24560-256</b>
Retention screw, PU 100 pieces; torque max. 0.2 Nm	<b>24560-141</b>	<b>24560-141</b>	<b>24560-141</b>	<b>24560-141</b>	<b>24560-141</b>	<b>24560-141</b>
Coding peg	<b>20817-501</b>	<b>20817-501</b>	<b>20817-501</b>	<b>20817-501</b>	<b>20817-501</b>	<b>20817-501</b>

1) SPQ (standard pack quantity): Part number includes 1 piece, but delivery is exclusively made in standard pack quantity (SPQ) please order at least the SPQ quantity or a multiple

2) Part no. includes one packing unit (PU); delivery is exclusively made in PU

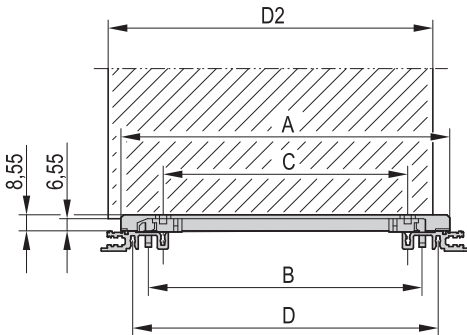
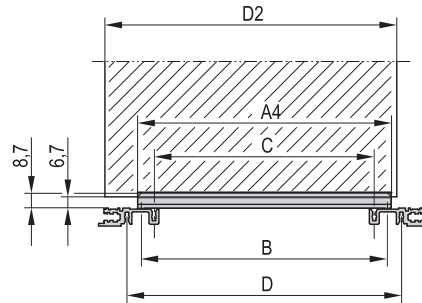
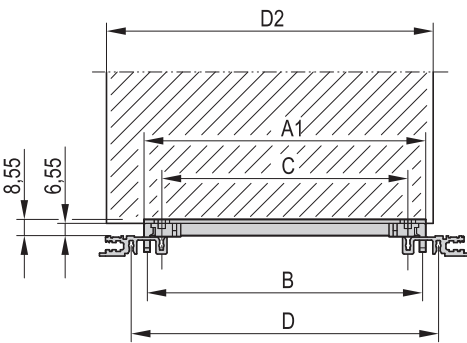
### NOTE

- (\*) only for groove width 2.0mm
- Headpieces with coding can be used for be used for groove width 2.0mm as well as for 2.5mm

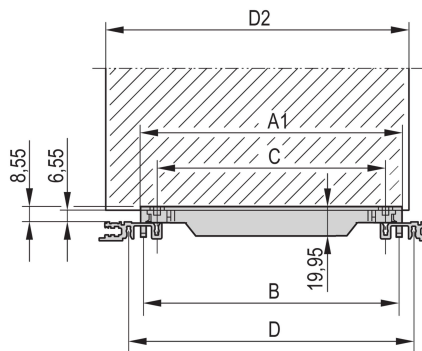


# Subracks – EuropacPRO

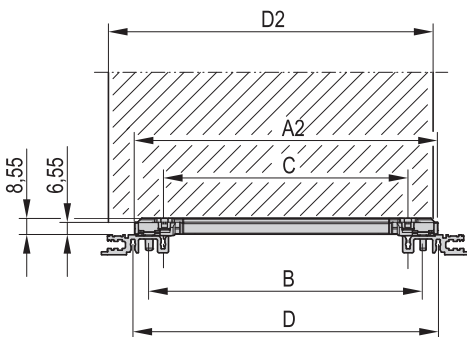
## DIMENSION DRAWINGS OF GUIDE RAILS

**Standard**

**Robust version**

**For accessories**


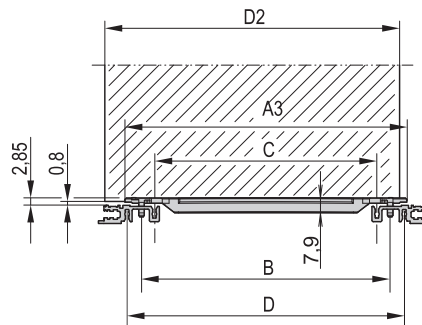
bza45808

**For accessories, strengthened**


06105074

**CompactPCI, VME64x**


bza45808

**4.4" (111.7 mm)**


06105068

06105069

Dimensions table									
Board length	Dimensions								
L	A	A1	A2	A3	A4	B	C	D	
mm	mm	mm	mm	mm	mm	mm	mm	mm	mm
70	71.5	47.9	59.39	63	49	45	30	60	
100	101.5	77.9	89.39	93	79	75	60	90	
160	161.5	137.9	149.39	153	139	135	120	150	
220	221.5	197.9	209.39	213	199	195	180	210	
280	281.5	257.9	269.39	273	259	255	240	270	
340	341.5	317.9	322.39	333	319	315	300	330	
400	401.5	377.9	389.39	393	379	375	360	390	

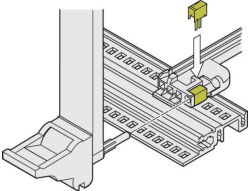
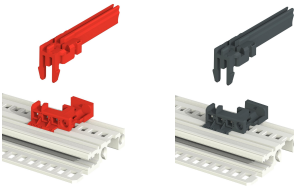
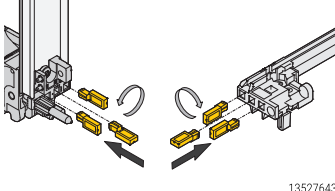
- A, A1, A2, A3, A4: Length of rail
- B: Pitch of snap-in fixing
- C: Pitch of guide rail retention screws
- D: Pitch of horizontal rail retention screws



# Subracks – EuropacPRO

## GUIDE RAIL ACCESSORIES

### ORDER INFORMATION

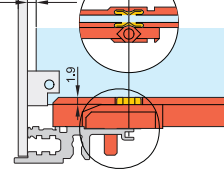
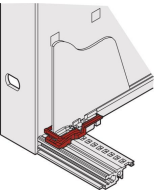
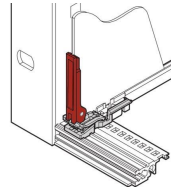
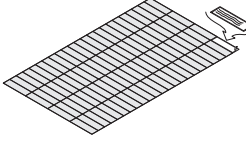
		ESD clips, CompactPCI/VME 64	Coding for subracks		
			Keying/coding block for guide rails accessory type		Keying/coding for CompactPCI, VME64x handles to IEEE 1011.10 and IEC 60297-3-103
			red, RAL 3000,	grey, RAL 7016	
		 <p>108230497</p> <p>Spring steel, tin-plated, ESD clip, for alignment pin in accordance with IEEE; can be plugged into the guide rails with coding and into the keying/coding block; provides conductive contact between the alignment pin of the insertion/extractor handle (IEL or IET handle) and the horizontal rail</p>	 <p>121894752</p> <p>136815562</p> <p>PC, UL 94 V-0, keying/coding block is clipped into the horizontal rail next to the guide rail; please order keying/coding pegs separately</p>	 <p>135276437</p> <p>Keying/coding peg, PC, UL 94 V-0, RAL 7035The keying/coding pegs prevent plug-in units to be mounted in wrong slots. They are inserted in the chambers of the codable card guides as well as in the insertion/extractor handles IEL or IET (4 possible positions), resulting in 64 codings per card guide; when coding the upper and lower card guide, 4096 codings will result;</p>	
Assembly	Colour	PU 50 pieces	1 piece (SPQ 50) red, RAL 3000,	grey, RAL 7016	PU 100 pieces
above	red	-	<b>64568-232</b>		-
	grey	-		<b>64568-233</b>	<b>20817-501</b>
	silver	<b>24560-256</b>	-		-
below	red	-	<b>64568-234</b>		-
	grey	-		<b>64568-235</b>	<b>20817-501</b>
	silver	<b>24560-256</b>	-		-

1) SPQ (standard pack quantity): Part number includes 1 piece, but delivery is exclusively made in standard pack quantity (SPQ); please order at least the SPQ quantity or a multiple

2) Part no. includes one packing unit (PU); delivery is exclusively made in PU

## GUIDE RAIL ACCESSORIES

### ORDER INFORMATION

		ESD clips for guide rails	Board locking C for PCBs without front panel; for accessory type guide rails	PCB handle C for board locking; for accessory type guide rails	Identification strips
		 <p>04503050</p> <p>Spring steel, tin-plated, provides conductive contact between board and horizontal rail, on both the solder side and the component side</p>	 <p>04805050</p> <p>PBT, UL 94 V-0, red, to fix the PCB in the subrack (also slot 1), can also be used without board handle, minimum distance 3 HP</p>	 <p>04805051</p> <p>PBT, UL 94 V-0, red, insertion/extraction function with connection to board locking (also slot 1), mounting directly behind front panel (above and below), minimum distance 3 HP</p>	 <p>06108076</p> <p>Polyester film, 31 x 4 mm, self-adhesive, white/matt (1 A4 sheet contains 438 pieces)</p>
Assembly	Colour	silver	red	red	white/matt
mm		PU 50 pieces	PU 10 pieces	PU 10 pieces	1 piece
above/below		<b>24560-255</b>	<b>24560-377</b>	<b>24560-378</b>	<b>60817-228</b>