



002 PCB TERMINAL BLOCKS

081 TERMINAL STRIPS

095 WIRE TO BOARD CONNECTORS

100 CIRCULAR CONNECTORS

151 IP68 CONNECTORS

158 INTERFACE MODULES AND RELAY BASES

5.08mm pitch PCB mounting crimp connectors

Product overview

- Ideal for installed PCB's in boiler controls, HVAC
- Polarised to avoid mis-mating
- Vertical headers
- 2 to 8 poles

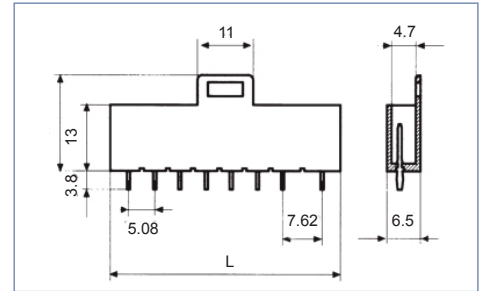
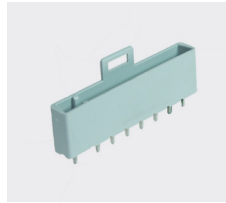
SPECIFICATION

Rating (male connectors)	125V/6A
Working temperature	110°C
Moulding	Grey UL94-V0 flame retardant PA
Contact male	Tinned, nickel plated brass
Contact female	Tinned brass
Wire strip length	4mm

Male housing

PART NO	POLES	LENGTH
CTM1300/2	2	15.1mm
CTM1300/3	3	20.2mm
CTM1300/4	4	25.3mm
CTM1300/5	5	30.4mm
CTM1300/6	6	35.5mm
CTM1300/7	7	40.5mm
CTM1300/8	8	45.6mm

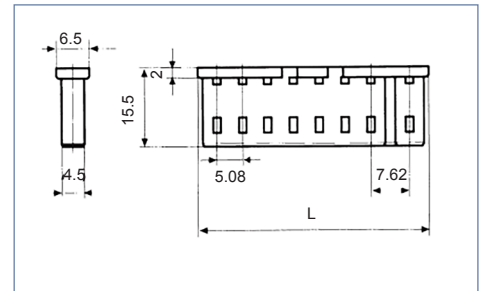
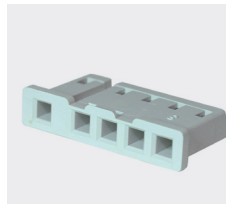
CTM1300



Female housing

PART NO	POLES	LENGTH
CTH1300/2	2	12.2mm
CTH1300/3	3	14.7mm
CTH1300/4	4	17.2mm
CTH1300/5	5	19.7mm
CTH1300/6	6	22.2mm
CTH1300/7	7	24.7mm
CTH1300/8	8	27.2mm

CTH1300



Crimps

PART NO	RATING	WIRE SIZE
CTC1300	4A	0.05 - 1.3mm ² 30- 16AWG

CTC1300

