

Stepped jaws, non-divided

Spare jaws for 3-jaw lathe chuck



Application:

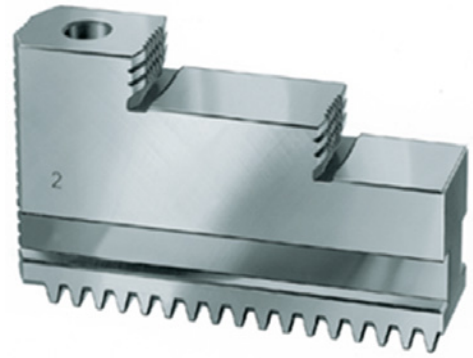
For horizontal clamping of flat workpieces.

Execution:

- Non-divided and hardened
- For use on SCHUNK ROTA-S plus 2.0, RÖHM DURO-T and FORKARDT F plus hand chucks.
- For hand chucks no. 22425-22426, 22427-22428

Delivery:

All sets have 3 pieces



Art. no.	22437 040
Brand	SCHUNK
Manufacturer Part Number	0161100
For chuck diameter	160 mm
Gross Weight	1.400 kg
Product Group	222