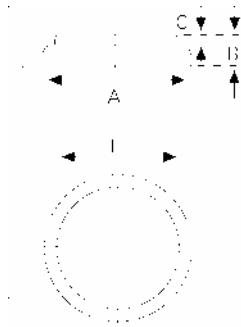


Data Sheet



Type Number 6216
Designation IEC CR 1216
System Li-Manganese dioxide / Organic Electrolyte

UL Recognition:..... MH 13654 (N)
Nominal Voltage 3 V
Typical Capacity C 27 mAh
 Load 39 kOhm, at 20°C down to 2 V

Weight (approx.) 0,7 g
Volume 0,17 ccm
Coding..... Date of Manufacturing Month/Year

Temperature Ranges min max.
 Storage -55°C 70°C
 Discharge -20°C 65°C

Dimensions min max.
 Diameter (A) 12,2 12,5
 Height (B) 1,4 1,6
 Shoulder Diameter[E]..... 10,0
 Shoulder Height [C]..... 0,2

Segment Electronic

Main Applications Watch
 Photo
 Electronic

Typical Capacities (at 20°C)

Discharge Type	Load	End Voltage:	2.0 V
Continuous 24h/d,7d/w Current [µA]:	39000 Ω	Time: Capacity [mAh]: Energy [mWh]:	355 h 27 77

All Data contained herein is for single cells

For battery applications, performance data may vary from single cell data, depending on specific battery configuration

VARTA Microbattery GmbH, Daimlerstr. 1, D-73479 Ellwangen/Jagst
 Tel.: (+49) 7961/921-0, Telefax: (+49) 7961/921-553

Subject to change without prior notice!
 Date of issue:2004-12-16