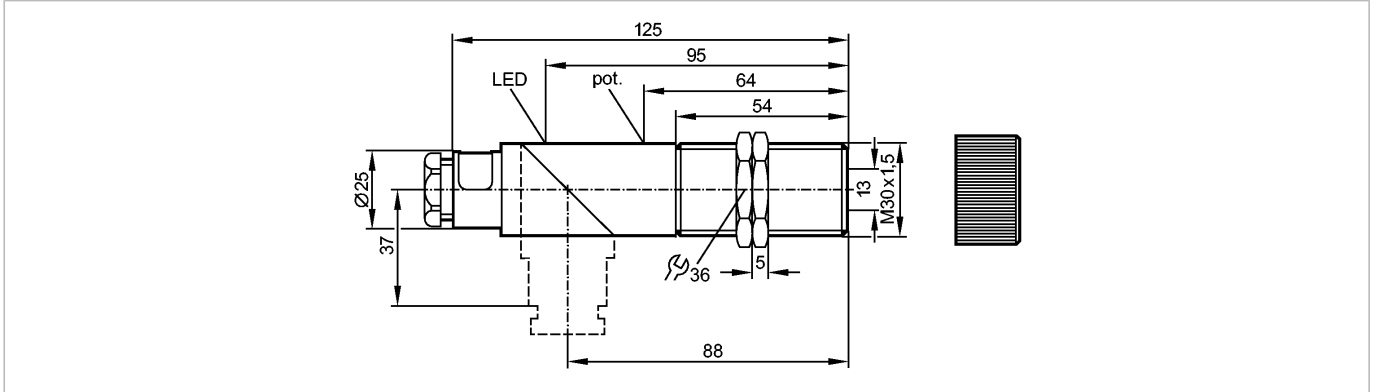




OIF-FPKG

Photoelectric sensors



Product characteristics

Fibre-optic amplifier

M30 x 1.5

Terminals

Sensing range 300mm

Range 70mm

adjustable

Electrical data

Electrical design

DC PNP

Operating voltage [V]

10...55 DC

Current consumption [mA]

30 (24 V)

Type of light

Infrared light 880 nm

Protection class

II

Reverse polarity protection

yes

Outputs

Output function

light-on / dark-on programmable

Voltage drop [V]

< 2.5

Current rating [mA]

250

Short-circuit protection

pulsed

Overload protection

yes

Switching frequency [Hz]

100

Range

Sensing range [m]

0.3

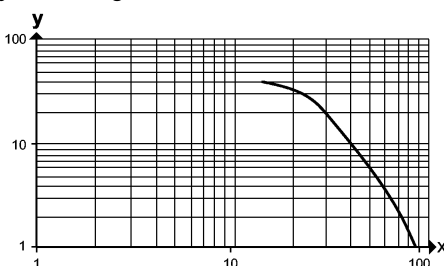
Range [mm]

70

Excess gain graphs

x: distance in [mm]

y: excess gain factor



Environment

Ambient temperature [°C]

-25...80

Protection

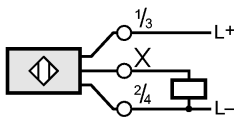
IP 65

Tests / approvals

OI5019 - Fibre-optic amplifier - eclass: 27270905 / 27-27-09-05

EMC		EN 60947-5-2
MTTF	[Years]	659
Mechanical data		
Housing materials		PBT; modified PPO
Lens material		PMMA
Weight	[kg]	0.119
Displays / operating elements		
Output status indication	LED	yellow
Electrical connection		
Connection		terminals up to 1.5 mm ² ; cable diameter 7...13 mm, cable gland M20 x 1.5

Wiring



Accessories		
Accessories (included)		2 lock nuts; screwdriver
Remarks		
Remarks		When through-beam fibre optics are connected light-on mode means the output function "NC" and when diffuse reflection fibre optics are connected the output function "NO". When through-beam fibre optics are connected dark-on mode means the output function "NO" and when diffuse reflection fibre optics are connected the output function "NC"
Pack quantity	[piece]	1