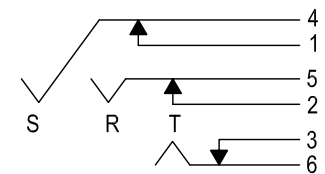


**NOTES:-**

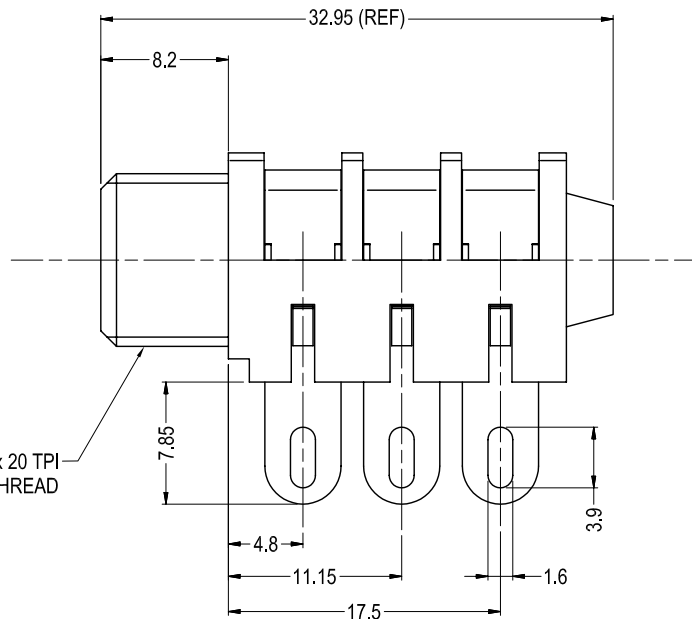
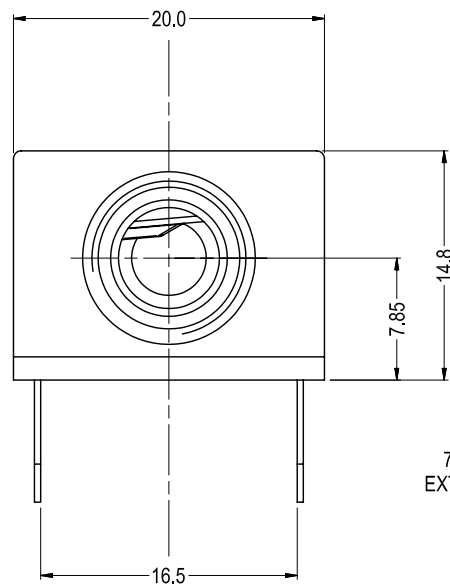
1. SUPPLIED WITH NUTS BULK PACKED.
2. SPACER WASHERS ARE NOT SUPPLIED WITH THIS MODEL.

ISS.	AMEND	DATE
1	ISSUED	02/04/2008
2	GOLD VARIANTS ADD	13/03/2009
3	VARIANT DESCRIPTIONS	02/02/2010

**SCHEMATIC**



SWITCH CONTACTS OPEN WHEN PLUG IS INSERTED, CLOSE WHEN PLUG IS WITHDRAWN.



7/16" UNF x 20 TPI EXTERNAL THREAD

VARIANT	PART No.	PLATING
S2C/BBB/ST/WN (Stereo)	FCR1272	TIN
S2C/BBB/ST/WN/G (Stereo)	FCR1272G	GOLD
S2C/BNB/ST/WN (Mono)	FCR1277	TIN
S2C/BNB/ST/WN/G (Mono)	FCR1277G	GOLD

**RoHS**  
COMPLIANT

**TOLERANCE**

- NO DEC. PLACE ±
- 1 DEC. PLACE ±
- 2 DEC. PLACE ±
- HOLE DIA. ±
- ANGLES ±
- UNLESS OTHERWISE STATED

WHERE USED F.R.

SCALE N.T.S.

DIMENSIONS IN MILLIMETERS UNLESS OTHERWISE STATED. WORK TO DIMENSIONS. DO NOT SCALE DRAWING. 3rd ANGLE PROJECTION. REMOVE ALL BURRS. IF IN DOUBT ASK.

**Cliff Electronic Components Ltd.**

76 Holmethorpe Ave., Holmethorpe Ind. Estate,  
Redhill, Surrey, RH1 2PF, England  
Tel: 01737-771375 Fax: 01737-766012

MATERIAL COMPOSITE

FINISH AS MOULDED / TIN PLATED / GOLD FLASH

DRAWN NJB

APPD. DPJ

TITLE S2C/BBB/ST/WN JACK SOCKET

DRWG. No. **FCR1272**

FORM: A4DRWGH