

## ER collet chucks with Mini nut

In accordance with ISO 12164 (DIN 69893)

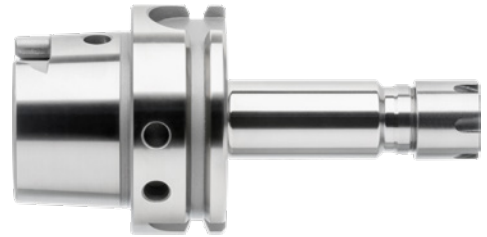
**ORION**<sup>®</sup>

### Execution:

- ER Mini nut finely balanced (G2.5/25,000 rpm).
- With Balluff chip hole.
- All tapers and tolerances are precision-ground.

### Delivery:

1x ER collet chuck in accordance with ISO 12164 (DIN 69893); incl. Mini nut.



<b>Art. no.</b>	<b>23297 051</b>
<b>Brand</b>	ORION
<b>Manufacturer Part Number</b>	23297051
<b>Tool holding device</b>	HSK 63
<b>Collet type</b>	GERC32-WD
<b>Min./max. clamping range 2</b>	0.5-7 mm
<b>Projecting length</b>	100 mm
<b>Outer diameter</b>	16 mm
<b>Diameter 3</b>	30 mm
<b>Length 3</b>	54 mm
<b>Balancing quality</b>	G 2.5 at 25 rpm
<b>Thread dimension</b>	M6 x 1
<b>Gross Weight</b>	0.855 kg
<b>Product Group</b>	2AV

### EAN

4053625399451