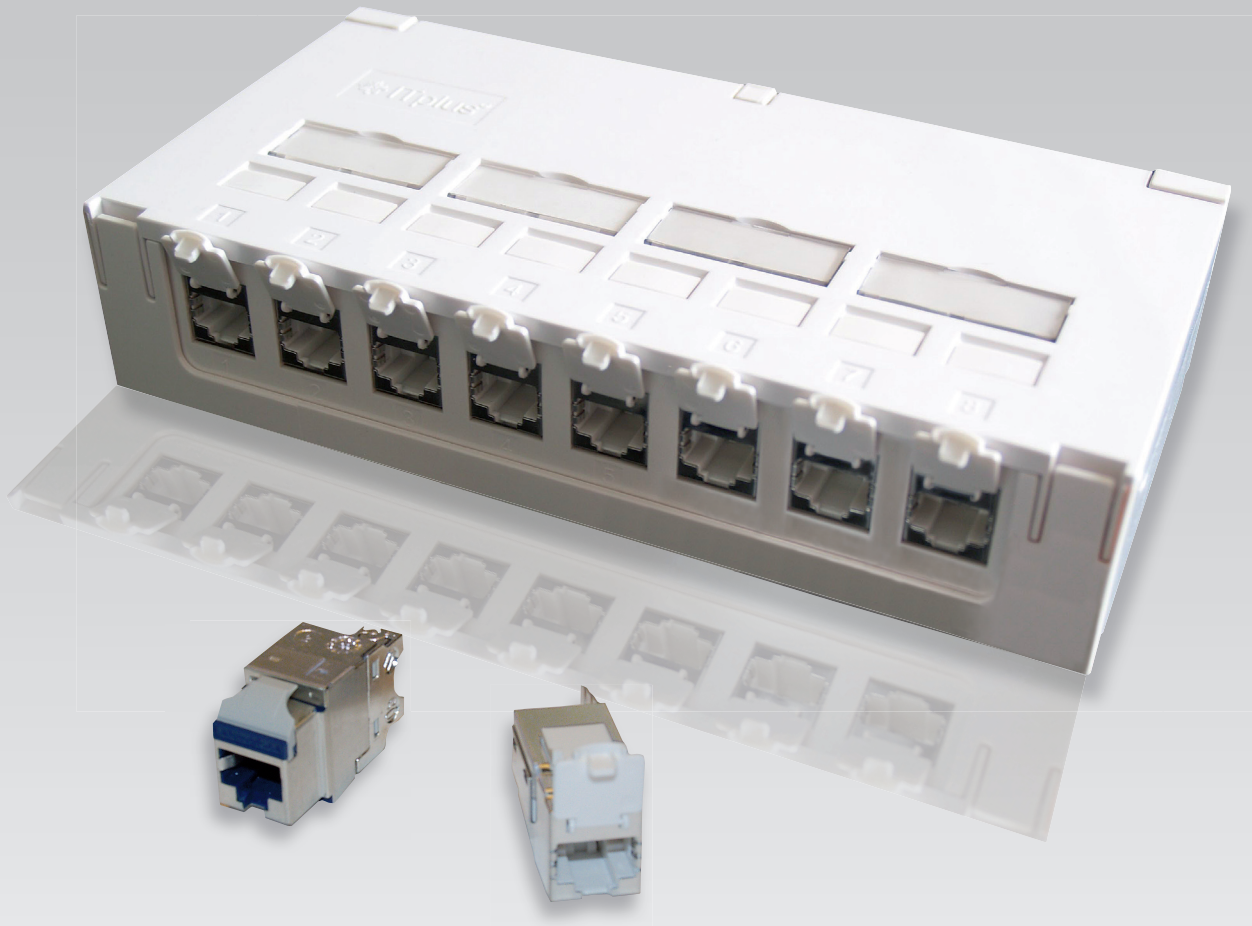




ITplus[®]

Mini AP connection box



- **Compact size** - *only 195 mm wide*
- **Clearly structured** - *by individual labelling and colour coding*
- **Keystone compatible** - *for miscellaneous applications*
- **Cost effective** - *the economic solution for small networks*
- **Expandable** - *trough modular design*

ELBRO AG

Swiss Technology Company

Gewerbestraße 4

CH-8162 Steinmaur/Switzerland

Phone: +41 44 854 73 00

Fax: +41 44 854 73 01

Internet: www.elbro.com

E-mail: info@elbro.com



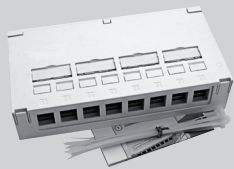
Mini AP connection box, 8-way

Networks with a small number of subscribers require simple and cost-effective distribution components without 19" cabinets and separate computer rooms. For this purpose, ELBRO offers a very special distribution unit, which is suitable as a marshalling rack, consolidation point (CP) or as a connecting unit for subscriber groups at the workplace. Up to 8 subscribers can be connected via the connection box. The distribution units can be mounted on the wall, the cable conduit and the DIN rail (with adapter) or simply can be placed on the table.



With the accessories, the Mini AP connection box can be lined up or even stacked for future expansion of the network. Colour coding allows the allocation of different services to the ports.

COZ-06 908-0 966 790 629



Mini AP connection box, 8-way

for optional equipping with ITplus® or LANmark Keystone modular jacks
8 cable inlets on the back side, incl. 8 cable ties
Plastic housing, white (RAL 9010)
Dimensions 195 x 100 x 41 mm

L00040A0009 966 739 168



Grounding set

for Mini AP connection box, incl. mounting material
Length 30 cm

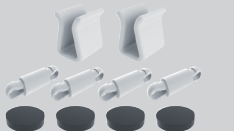
H06000A0056 977 800 968



DIN rail adapter

for Mini AP connection box, for mounting on DIN rail
incl. mounting material

H06011A0007 977 900 968



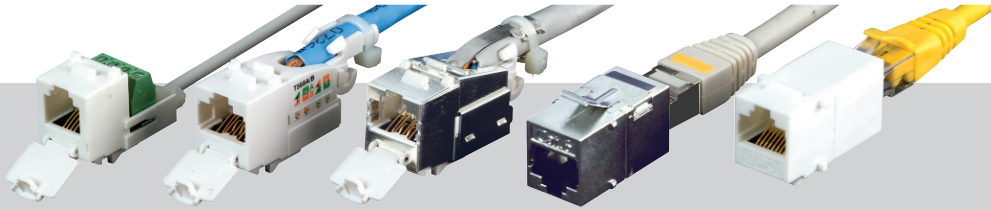
Accessories set

for Mini AP connection box
Set with 2 connecting brackets and 4 spacers and
4 self-adhesive rubber feet

Labels for colour coding, pack of 100 pcs



Data	E-No.	couleur	Phone	E-No.	couleur
B00111A0019	977 902 158	red	B00111A0028	977 903 158	red
B00111A0018	977 902 168	yellow	B00111A0027	977 903 168	yellow
B00111A0023	977 902 148	green	B00111A0025	977 903 148	green
B00111A0024	977 902 128	blue	B00111A0026	977 903 128	blue

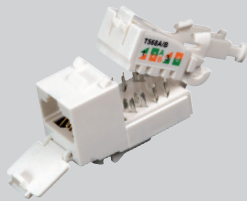


Components ITplus®

COU-90 010-61 966 702 766

Jack ITplus® RJ45 Cat.6A 10G, unshielded

For setting up Class D and E transmission links with up to four plug connections inline. Fulfils the requirements of ISO/IEC 11801 (2), EN 50173-1 (2), IEC 60603-7 and TIA/EIA568B.2-10 Cat.6A. For wire diameter AWG 23 - 26. Parallel pair connection without crossing in accordance to EIA/TIA 568A/B. Strain relief of cable by means of included cable tie individual, strain relief of wires, up to 20 re-connection cycles. Gold-plated nickel contacts, for more than 1000 plugging cycles. With integrated and captive dust protection. For Keystone slots, fast and easy installation.



COS-90 010-61 966 702 866

Jack ITplus® RJ45 Cat.6A 10G, shielded

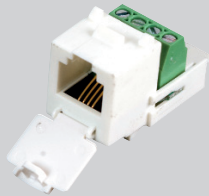
For setting up Class D and E transmission links with up to four plug-in connections inline. Fulfils the requirements of ISO/IEC 11801 (2), EN 50173-1 (2), IEC 60603-7 and TIA/EIA568B.2-10 Cat.6A. For wire diameter AWG 23 - 26. Parallel pair connection without crossing in accordance to EIA/TIA 568A/B. Strain relief of cable by means of included cable tie individual, strain relief of wires, up to 20 re-connection cycles. Gold-plated nickel contacts, for more than 1000 plugging cycles. With integrated and captive dust protection. For Keystone slots, fast and easy installation.



SOH-12 101 977 801 048

Jack ITplus® RJ11, screw connection

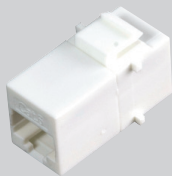
For connecting cables (U72) for ADSL, ISDN and POTS. Meets requirements of IEC 60512-7. Screw connection with spring terminals enables parallel connection of wire diameters 0.5 – 1.0 mm² AWG 22 - 27. Four contacts (2,3,4,5) are occupied (USOC RJ11). Strain relief by means of cable tie, up to 20 re-connection cycles. Gold-plated nickel contacts, for more than 1000 plugging cycles. With integrated and captive dust protection. For Keystone slots, fast and easy installation.



IEU-11 100 977 830 098

Coupler ITplus® RJ45 Cat.6, unshielded

For setting up consolidation points and workplace boxes with two-sided RJ45 connection. Fulfils Cat.6/Class E Permanent Link and Channel requirements of ISO/IEC 11801, EN 50173, IEC 60603-7 and TIA/EIA 568B.2. Gold-plated nickel contacts, for more than 750 plugging cycles. For Keystone slots, fast and easy installation.



IES-11 100 977 800 098

Coupler ITplus® RJ45 Cat.6, shielded

For setting up consolidation points and workplace boxes with two-sided RJ45 connection. Fulfils Cat.6/Class E Permanent Link and Channel requirements of ISO/IEC 11801, EN 50173, IEC 60603-7 and TIA/EIA 568B.2. Gold-plated contacts on nickel, for more than 750 plugging cycles. Die cast housing with grounding flag. For Keystone slots, fast and easy installation.

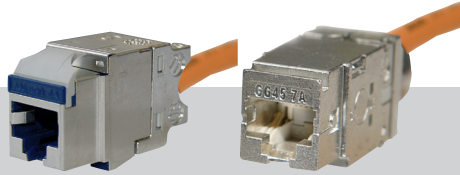


COU-93 001-61 966 733 808

Dummy insert ITplus®

Cover element for Keystone reserve slots, white.



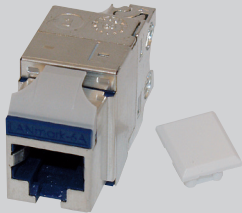


Components **LANmark**

N420.66A-KS 978 800 109

Jack LANmark-6A EVO shielded 500 MHz

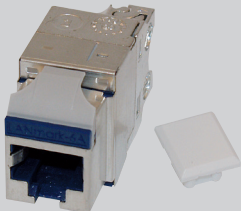
For setting up class EA transmission links.
Fulfills TIA and ISO Cat6A cabling standards. Supports extremely short Cat6A channel configurations, such as those needed in data centres.
(EN 50173-1; EN 50173-3; IEC 60603-7-5; IEC 60603-751; ISO 11801:2002 / A1:2008; TIA/EIA-568-B2-10)



N420.67A-KS 978 800 209

Jack LANmark-6A EVO shielded 500 MHz for stranded wires

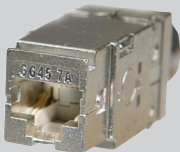
For setting up class EA transmission links.
Fulfills TIA and ISO Cat6A cabling standards. Supports extremely short Cat6A channel configurations, such as those needed in data centres.
(EN 50173-1; EN 50173-3; IEC 60603-7-5; IEC 60603-751; ISO 11801:2002 / A1:2008; TIA/EIA-568-B2-10)



N420.735-KS 978 800 309

Jack LANmark-7A GG45 shielded 1000 MHz

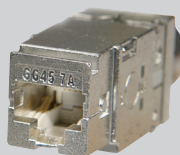
For setting up class FA transmission links.
The Cat7A jack with innovative GG45 interface, downward compatible for RJ45 plugs.
Supports future 40 gigabit Ethernet transmission rates.
(EN 50173-1; IEC 60603-7-5; ISO/IEC 11801)



N420.736-KS 978 800 409

Jack LANmark-7A GG45 shielded 1000 MHz for stranded wires

For setting up class FA transmission links.
The Cat7A jack with innovative GG45 interface, downward compatible for RJ45 plugs.
Supports future 40 gigabit Ethernet transmission rates.
(EN 50173-1; IEC 60603-7-5; ISO/IEC 11801)



COU-93 001-61 966 733 808

Dummy insert ITplus®

Cover element for Keystone reserve slots, white.



Sales:

ELBRO AG

Swiss Technology AG

Gewerbestraße 4

CH-8162 Steinmaur/Switzerland

Phone: +41 44 854 73 00

Fax: +41 44 854 73 01

Internet: www.elbro.com

E-mail: info@elbro.com