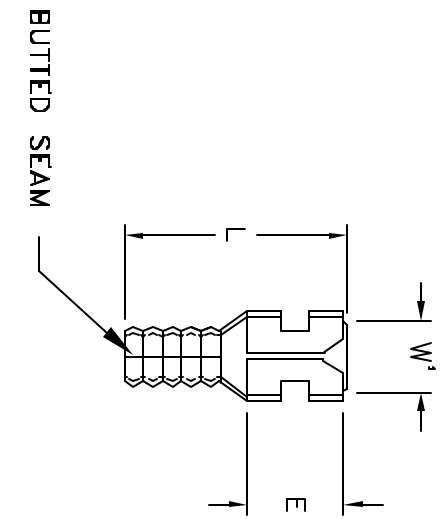
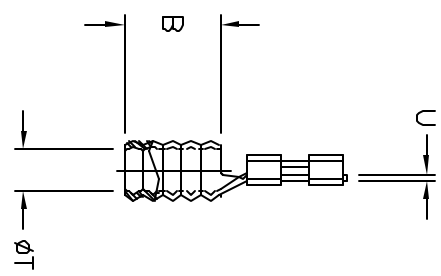


ALL RIGHTS RESERVED. NO PORTION OF THIS PUBLICATION, WHETHER IN WHOLE OR IN PART CAN BE REPRODUCED WITHOUT THE EXPRESS WRITTEN CONSENT OF SPC TECHNOLOGY.

REVISIONS		DOC. NO.	SPC-F005	Effective:	12/21/98	DCP No:	880	
DCP #	REV	DESCRIPTION	DRAWN	DATE	CHECKD	DATE	APPRVD	DATE
278	EDwg	corrected -.020 wdg .016; .032 wdg .020MM	JWM	9/9/97	JC	9/16/97	BB	9/19/97
1199	C	Renamed - was CFS-TO-****-HT	JWM	3/1/02	JC	3/1/02	JC	3/1/02



TYPE I



TYPE II

NOTES:

1. MATERIAL: NICKEL PLATED ALLOY STEEL
2. CONTINUOUS OPERATING TEMPERATURE: 900°F (482°C)
INTERMITTENT OPERATING TEMPERATURE: 1200°F (649°C)
3. VOLTAGE RATING: 600 V
4. INSIDE DIAMETER OF DIMENSION E TO BE FREE OF BURRS.
5. TYPE II IS A VARIATION OF TYPE I. ALL DIMENSIONS ARE TYPICAL

PART NUMBER	WIRE RANGE (AWG)	MATES WITH MALE TAB WIDTH (W') X THICKNESS	L	B	T	E	U
CFS-TO-1418-HT	16-14	.187 x .016 .187 x .020	.58	.25	.085	.25	.016
CFS-TO-1425-HT	16-14	.250 x .030 .250 x .032	.64	.23	.095	.30	.020

DISCLAIMER
ALL STATEMENTS AND TECHNICAL INFORMATION CONTAINED HEREIN ARE BASED UPON INFORMATION AND/OR TESTS WE BELIEVE TO BE ACCURATE AND RELIABLE. SINCE CONDITIONS OF USE ARE BEYOND OUR CONTROL, THE USER SHALL DETERMINE THE SUITABILITY OF THE PRODUCT FOR THE INTENDED USE AND ASSUME ALL RISK AND LIABILITY WHATSOEVER IN CONNECTION THEREWITH.

UNLESS OTHERWISE SPECIFIED, DIMENSIONS ARE FOR REFERENCE PURPOSES ONLY.

DRAWN BY:	DATE:
JC	3/1/91
CHECKED BY:	DATE:
JC	12/9/91
APPROVED BY:	DATE:
JL	12/9/01

DRAWING TITLE: **High Temperature Terminal, Quick Connect**

SIZE	DWG. NO.	ELECTRONIC FILE	REV
A	TA-501	TA-501.dwg	C
SCALE:	NTS	U.O.M.: INCHES [mm]	SHEET: 1 OF 1