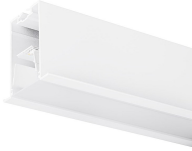


Mini Continuum II - Direct - Trim

MC2 TRIM 3.6M 3K DALI WHT OPAL

2093137



Product features

- 2093137 MC2 TRIM 3.6M 3K DALI WHT OPAL Continuous lines of LED light, white RAL 9016, direct distribution, trim detail for plasterboard ceilings, suitable for recessed installation either horizontally or vertically, various accessories available, compact and minimalist design based on the Golden Mean, ideal for offices, meeting rooms, corridors, education facilities, museums and libraries, extruded aluminium body, diffuser: opal, colour temperature: 3000K warm white, total system power: 63W, total fixture output: 6600lm, luminaire efficacy: 105lm/W, LOR: 100%, colour rendering: Ra >80, LED Chromacity: 3 step MacAdam ellipse, lifespan: 66,000 hours L90B10, IR/UV free light source without heat radiation, operating voltage: 220-240V / 50-60Hz, drive current: 800mA, electronic driver, DALI dimmable, electrical protection: CLASS I, IP20, suitable for internal environment only.



PRODUCT OVERVIEW

Product name	MC2 TRIM 3.6M 3K DALI WHT OPAL
Technology	LED
Housing	Aluminium
Mount	Ceiling recessed mounting
Environment	Internal
General application	Education, Hospitality, Office, Retail
ETIM Class	EC002892
E-number FI	4237852
Warranty	5 years
Fixture luminous flux (lm)	6600
Luminaire efficacy (lm/W)	105
LOR (%)	100
Colour temperature (K)	3000
Light colour	Warm White
CRI (Ra)	80
Colour Variation Initial (SDCM)	SDCM3
Glare control	< 17
Photobiological Risk Group	RG0
Total power consumption (W)	63
Electrical protection	Class I
Control gear type	Electronic ballast
Dimming method	DALI
Minimum dimming level (%)	1
Housing colour	White
IP rating	IP20
IK rating	IK02
Product EAN number	5025768931378

DATA TABLE

Mini Continuum II - Direct - Trim

MC2 TRIM 3.6M 3K DALI WHT OPAL
2093137

General data

Product name	MC2 TRIM 3.6M 3K DALI WHT OPAL
Technology	LED
Housing	Aluminium
Mount	Ceiling recessed mounting
Environment	Internal
General application	Education, Hospitality, Office, Retail
Performance ambient temperature Tq (°C)	25
ETIM Class	EC002892
E-number FI	4237852
Warranty	5 years

Optical data

Fixture luminous flux (lm)	6600
Luminaire efficacy (lm/W)	105
LOR (%)	100
Colour temperature (K)	3000
Light colour	Warm White
CRI (Ra)	80
Colour Variation Initial (SDCM)	SDCM3
Adjustable chromaticity	N
Glare control	< 17
Photobiological Risk Group	RG0

Electrical data

Total power consumption (W)	63
Mains voltage (V)	220-240V
Lamp power factor	0.98
Electrical protection	Class I
Control gear type	Electronic ballast
Transformer required	Yes
Dimming method	DALI
Minimum dimming level (%)	1
Drive current (mA)	800
Inrush Current (A)	40
Inrush Duration (µs)	178
Energy Efficiency Class (A->G) of contained light source	C
Max. Luminaires per 10A C Breaker	15
Max. Luminaires per 13A C Breaker	20
Max. Luminaires per 16A C Breaker	23
Max. Luminaires per 20A C Breaker	30
Max. Luminaires per 10A B Breaker	9
Max. Luminaires per 13A B Breaker	12
Max. Luminaires per 16A B Breaker	14
Max. Luminaires per 20A B Breaker	18

Lifetime data

Lifespan L70 B50	120000
-------------------------	--------

Mini Continuum II - Direct - Trim

MC2 TRIM 3.6M 3K DALI WHT OPAL
2093137

Lifespan L80 B20	120000
Lifespan L90 B10	66000

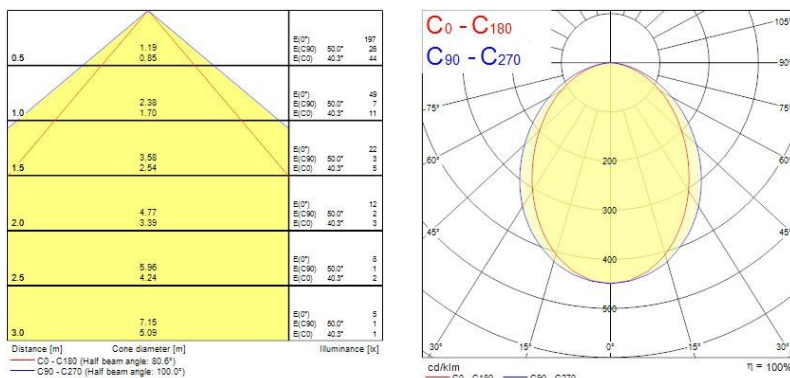
Physical data

Housing colour	White
IP rating	IP20
IK rating	IK02
Diffuser finish	Opal
Diffuser material	PC Polycarbonate
Nominal Product Length (mm)	3600
Nominal Product Width (mm)	80
Nominal Product Height (mm)	86
Cutout Dimensions (W x L in mm or Diameter in mm)	60 x 3600
Weight (kg)	8.4
Recessed Depth (mm)	136

Packaging

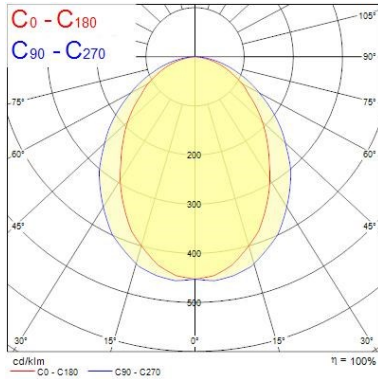
Single packaging type	Carton
Product EAN number	5025768931378
Packaging single length / height (cm)	365.0
Packaging single width (cm)	9.0
Packaging single depth (cm)	10.0
DUN14 (outer)	05025768931378
Units per outer package	1
Packaging outer length / height (cm)	365.0
Packaging outer width (cm)	9.0
Packaging outer depth (cm)	10.0

PHOTOMETRY



Mini Continuum II - Direct - Trim

MC2 TRIM 3.6M 3K DALI WHT OPAL
2093137

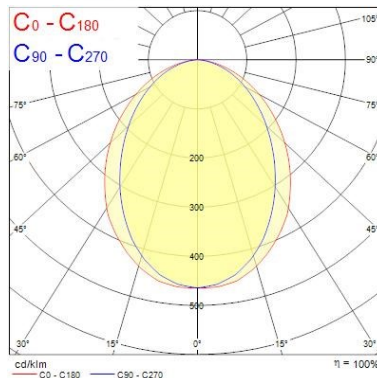


Distance [m]	Cone diameter [m]	E _{0°} [lx]	E _{1/2°} [lx]	E _{1°} [lx]
0.5	0.86 1.11	11250	40.8° 2219	48.0° 1889
1.0	1.71 2.22	2783	40.8° 808	48.0° 418
1.5	2.57 3.33	1238	40.8° 289	48.0° 154
2.0	3.43 4.44	691	40.8° 161	48.0° 104
2.5	4.29 5.55	442	40.8° 97	48.0° 66
3.0	5.14 6.66	307	40.8° 67	48.0° 46

Distance [m] Cone diameter [m] Illuminance [lx]
 — C0 - C180 (Half beam angle: 96.0°)
 — C90 - C270 (Half beam angle: 91.2°)

Distance [m]	Cone diameter [m]	E _{0°} [lx]	E _{1/2°} [lx]	E _{1°} [lx]
0.5	1.13 0.91	11988	48.6° 1723	42.4° 2402
1.0	2.27 1.83	2975	48.6° 431	42.4° 600
1.5	3.40 2.74	1322	48.6° 191	42.4° 267
2.0	4.54 3.65	744	48.6° 108	42.4° 150
2.5	5.67 4.57	476	48.6° 69	42.4° 96
3.0	6.81 5.48	321	48.6° 48	42.4° 67

Distance [m] Cone diameter [m] Illuminance [lx]
 — C0 - C180 (Half beam angle: 84.8°)
 — C90 - C270 (Half beam angle: 81.2°)



TECHNICAL DRAWINGS

