

GN 275 | Pivoting connecting clamps

Aluminium



- 1
- 2
- 3
- 4
- 5
- 6
- 7
- 8
- 9
- 10
- 11
- 12
- 13
- 14
- 15
- 16
- 17
- 18

MATERIAL

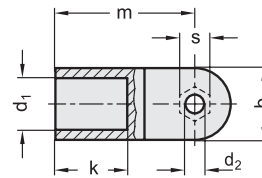
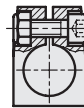
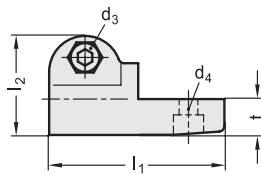
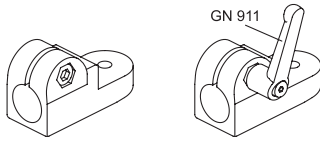
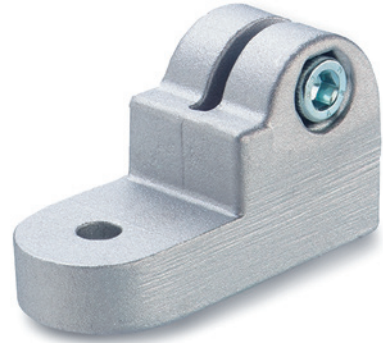
Aluminium, matte finish.
AISI 304 stainless steel screw and nut.

STANDARD EXECUTIONS

- **GN 275-BL**: natural aluminium.
- **GN 275-SW**: aluminium, epoxy resin coating, RAL 9005 black colour.

FEATURES AND APPLICATIONS

The assembly hole of GN 275 connecting clamps allows an excellent match with tubes GN 990 (see page 1778).
GN 275 connecting clamps can be assembled with connecting clamps GN 271 (see page 1751), GN 273 (see page 1753) or GN 277 (see page 1757).
The clamping screws d3 may be replaced by clamping kits GN 911 (see page 1782).



GN 275-BL

Code	Description	b	d1	d2	d3	d4	k	l1	l2	m	t	s	d3 Clamping kit	△
GN.59011	GN 275-B12-2-BL	25	12	6.5	M6	M6	25	61	34.5	48.5	12.5	10	GN 911-M6-22	74
GN.59031	GN 275-B14-2-BL	25	14	6.5	M6	M6	25	61	34.5	48.5	12.5	10	GN 911-M6-22	70
GN.59051	GN 275-B16-2-BL	25	16	6.5	M6	M6	25	61	34.5	48.5	12.5	10	GN 911-M6-22	60
GN.59071	GN 275-B18-2-BL	25	18	6.5	M6	M6	25	61	34.5	48.5	12.5	10	GN 911-M6-22	64

GN 275-SW

Code	Description	b	d1	d2	d3	d4	k	l1	l2	m	t	s	d3 Clamping kit	△
GN.59016	GN 275-B12-2-SW	25	12	6.5	M6	M6	25	61	34.5	48.5	12.5	10	GN 911-M6-22	74
GN.59036	GN 275-B14-2-SW	25	14	6.5	M6	M6	25	61	34.5	48.5	12.5	10	GN 911-M6-22	70
GN.59056	GN 275-B16-2-SW	25	16	6.5	M6	M6	25	61	34.5	48.5	12.5	10	GN 911-M6-22	68
GN.59076	GN 275-B18-2-SW	25	18	6.5	M6	M6	25	61	34.5	48.5	12.5	10	GN 911-M6-22	64

Connecting clamps

1756