

2.54mm PCB connectors

Order code	Manufacturer code	Description
22-2950	n/a	PACK 100 MALE PIN CONTACT*OFFER 22-2951*
22-2955	n/a	PACK 100 FEMALE SKT CONT *OFFER 22-2956*
22-2925	n/a	4 WAY 90 DEGREE 0.2IN HEADER (RC)
22-2920	n/a	4 WAY STRAIGHT 0.2IN HEADER (RC)
22-2930	n/a	4 WAY FEMALE 0.2IN HOUSING (RC)
22-2935	n/a	4 WAY MALE 0.2IN HOUSING (RC)

2.54mm PCB connectors	Page 1 of 3
The enclosed information is believed to be correct, Information may change without notice due to product improvement. Users should ensure that the product is suitable for their use. E. & O. E.	Revision A 20/02/2007

.200" (5.08mm) PITCH CONNECTORS

SPECIFICATION

VOLTAGE RATING : AC, DC. 250V max
 CURRENT RATING : 7A Max
 APPLICABLE P.C. BOARD THICKNESS : 0.063" (1.6mm)

PIN BASE

POLE : 4P
 MATERIAL : POST : BRASS/TIN
 : BASE : NYLON, 66 UL 94V-2

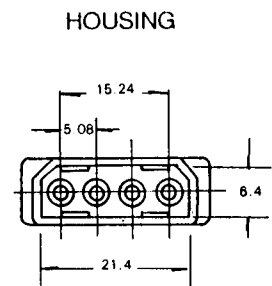
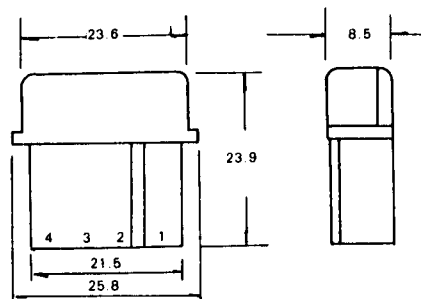
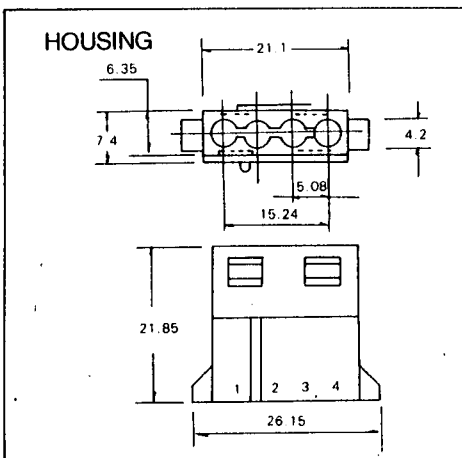
HOUSING

MATERIAL : NYLON 66, UL94V-2
 POLE : 4P

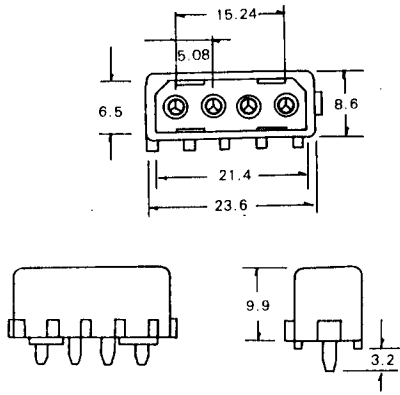
TERMINAL

CONNECTOR

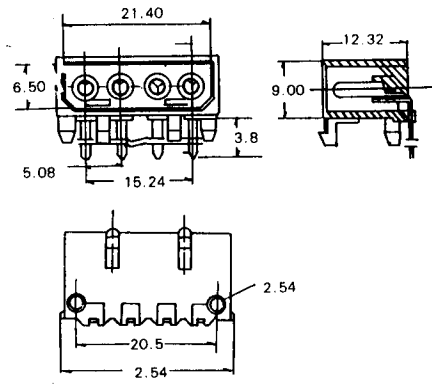
MATERIAL : BRASS/TIN



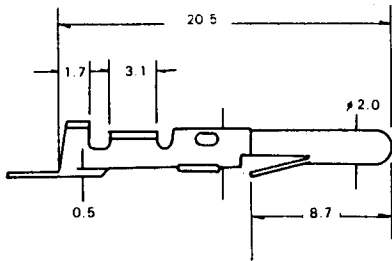
PIN BASE 180°



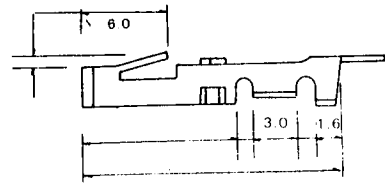
PIN BASE 90°



TERMINAL

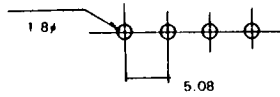


TERMINAL



P.C. BOARD LAYOUT DIMENSION

180°



90°

