



Datenblatt - Fiche technique - Data sheet

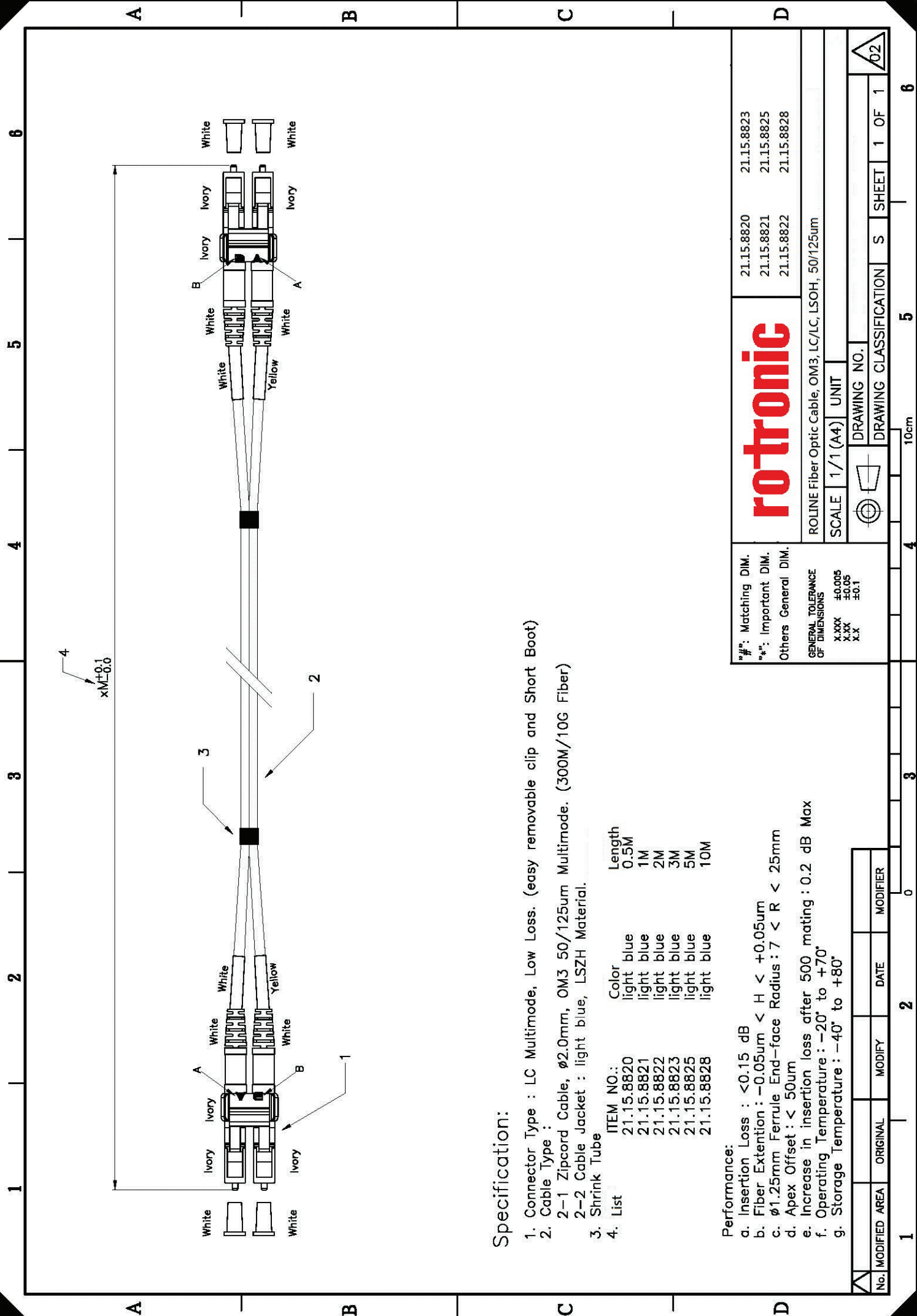
21.15.8828



ROLINE LWL-Kabel 50/125 μ m OM3, LC/LC, Low-Loss-Stecker, 10m

ROLINE Câble FO 50/125 μ m OM3, LC/LC, connecteurs Low-Loss, 10m

ROLINE FO Jumper Cable 50/125 μ m OM3, LC/LC, Low-Loss-Connector, 10m



Specification:

- 1. Connector Type : LC Multimode, Low Loss. (easy removable clip and Short Boot)
- 2. Cable Type :
 - 2-1 Zipcord Cable, ϕ 2.0mm, OM3 50/125um Multimode. (300M/10G Fiber)
 - 2-2 Cable Jacket : light blue, LSZH Material.
- 3. Shrink Tube
- 4. List

ITEM NO.:	Color	Length
21.15.8820	light blue	0.5M
21.15.8821	light blue	1M
21.15.8822	light blue	2M
21.15.8823	light blue	3M
21.15.8825	light blue	5M
21.15.8828	light blue	10M

- Performance:**
- a. Insertion Loss : < 0.15 dB
 - b. Fiber Extension : $-0.05\mu\text{m} < H < +0.05\mu\text{m}$
 - c. ϕ 1.25mm Ferrule End-face Radius : $7 < R < 25\text{mm}$
 - d. Apex Offset : $< 50\mu\text{m}$
 - e. Increase in insertion loss after 500 mating : 0.2 dB Max
 - f. Operating Temperature : -20° to $+70^\circ$
 - g. Storage Temperature : -40° to $+80^\circ$

rotronic		21.15.8820	21.15.8823
ROLINE Fiber Optic Cable, OM3, LC/LC, LSOH, 50/125um		21.15.8821	21.15.8825
SCALE 1/1 (A4) UNIT		21.15.8822	21.15.8828
DRAWING NO.		DRAWING CLASSIFICATION	
DRAWING NO.		S	SHEET 1 OF 1
10cm		5	6

No.	MODIFIED AREA	ORIGINAL	MODIFY	DATE	MODIFIER
1			2	0	