

- 1
- 2
- 3
- 4
- 5
- 6
- 7
- 8
- 9
- 10
- 11**
- 12
- 13
- 14
- 15
- 16
- 17
- 18

STANDARD EXECUTIONS

- **RMD-US-SC:** (SmCo) Samarium cobalt magnet, resistant to temperatures up to 200°C.
 - **RMD-US-ND:** (NdFeB) Neodymium- iron-boron magnet, resistant to temperatures up to 80°C, nickel-plated finish.
- See Guidelines for the choosing (on page 1052).

FEATURES AND APPLICATIONS

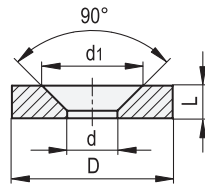
RMD-US retaining magnets are unshielded round magnets. They are mostly attached by gluing. When used without air gap, RMD-US unshielded magnets have lower adhesive forces than the magnet systems RMD.(see page 1060) in which magnetic shielding increases enormously the intensity of the adhesive force acting on the surface.



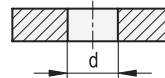
SPECIAL EXECUTIONS ON REQUEST

Retaining magnet made of ferrite, resistant to temperatures up to 200°C.

RMD-US-ND (D ≤ 24)



RMD-US-ND (D ≥ 32)
RMD-US-SC



RMD-US-SC

Code	Description	D	d±0.1	L±0.1	Nominal adhesive forces* [N]	⚖️
501371	RMD-US-SC-15-8-3.5	15 ±0.1	8	3.5	23	4
501372	RMD-US-SC-18-8-4	18 ±0.1	8	4	31	7
501373	RMD-US-SC-24-11.5-4	24 ±0.1	11.5	4	51	12
501374	RMD-US-SC-32-10-4	32 ±0.1	10	4	67	24

RMD-US-ND

Code	Description	D	d±0.1	d+0.5	L±0.1	Nominal adhesive forces* [N]	⚖️
501361	RMD-US-ND-12-3.5-3	12 ±0.1	3.5	6.6	3	18	2
501362	RMD-US-ND-15-4.5-3.5	15 ±0.1	4.5	9.3	3.5	29	4
501363	RMD-US-ND-18-4.5-4	18 ±0.1	4.5	9.3	4	41	7
501364	RMD-US-ND-24-5.5-4	24 ±0.1	5.5	11.5	4	66	12
501365	RMD-US-ND-32-10.5-2	32 ±0.1	10.5	-	2	42	11
501366	RMD-US-ND-38-12-4	38 ±0.1	12	-	4	110	30
501367	RMD-US-ND-48-15-5	48 ±0.2	15	-	5	165	61
501368	RMD-US-ND-56-15-6	56 ±0.2	15	-	6	230	102

1066 * The values of the nominal adhesive forces are approximate and refer to magnetic properties of laboratory samples.