

M4 Female to Female Brass PCB Spacers



DESCRIPTION

5mm AF hexagonal female to female brass spacers with an M4 tapped hole in each end.

APPLICATIONS

Mounting printed circuit boards or other panels on to a chassis. Ideal for applications where non-ferrous parts are required.

Brass

F-F

M4



GENERAL SPECIFICATION

Series	Brass PCB Spacers
Type	Female-Female (F-F) M4 thread
Across Flats (AF)	7mm



MATERIALS

Material	Material acc. to DIN 17660: Cu Zn 39 Pb 3
Material Number	2.0401
Finish	Surface finish acc. to DIN 267: nickel plated (G 3 E)
Tensile Strength	Min 430 N/mm ²
Elongation after fracture min. (%)	11



CERTIFICATION AND STANDARDS

Material Specification	DIN 17660
Plating Specification	DIN 267



ENVIRONMENTAL/OPERATING SPECIFICATION

Maximum Tightening Torque	1.2 Nm
---------------------------	--------



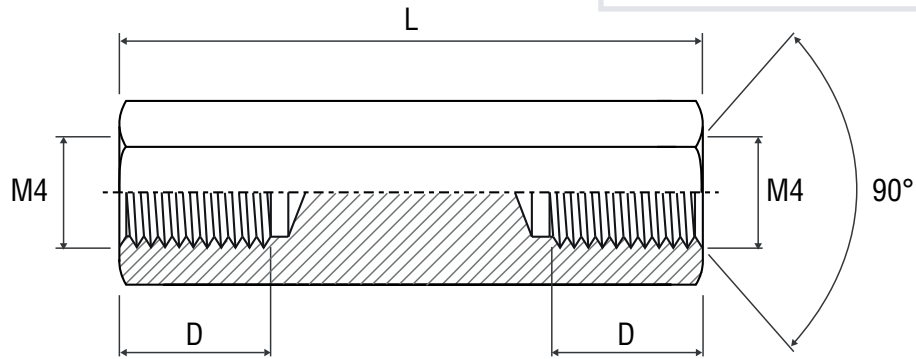
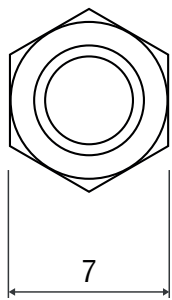
OPTIONS

Length	Custom lengths available*
Material	Steel, stainless steel, aluminium*
*MOQ may apply	



DIMENSIONS/DRAWINGS

Dimensions	mm
------------	----



PART NUMBER TABLE

Part Number Units	Body Length (L) mm	Pack quantity (pieces)	Thread Depth (D) mm	Weight g	EAN	UNSPSC	Country of origin
52-4420	5	25	5	1.312	5053556004072	31161816	Germany
52-4421	6	25	6	1.58	5053556004089	31161816	Germany
52-4422	10	25	10	2.608	5053556004096	31161816	Germany
52-4423	12	25	12	3.04	5053556004102	31161816	Germany
52-4375	15	25	15	3.9	5053556003938	31161816	Germany
52-4424	16	25	16	4.176	5053556004119	31161816	Germany
52-4425	20	25	10	5.2	5053556004126	31161816	Germany
52-4426	25	25	10	6.356	5053556004133	31161816	Germany
52-4427	30	25	10	7.672	5053556004140	31161816	Germany

R-TECH

Tried & trusted technology

Important Notice: This data sheet and its contents (the "Information") belong to Rapid Electronics Limited or are licensed to it. No licence is granted for the use of it other than for information purposes in connection with the products to which it relates. No licence of any intellectual property rights is granted. The Information is subject to change without notice and replaces all data sheets previously supplied. The Information supplied is believed to be accurate but Rapid Electronics Limited assumes no responsibility for its accuracy or completeness, any error in or omission from it or for any use made of it. Users of this data sheet should check for themselves the Information and the suitability of the products for their purpose and not make any assumptions based on information included or omitted. Liability for loss or damage resulting from any reliance on the Information or use of it (including liability resulting from negligence or where Rapid Electronics Limited were aware of the possibility of such loss or damage arising) is excluded. This will not operate to limit or restrict Rapid Electronics Limited's liability for death or personal injury resulting from its negligence.