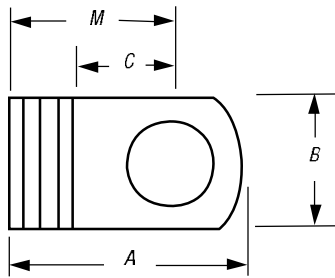
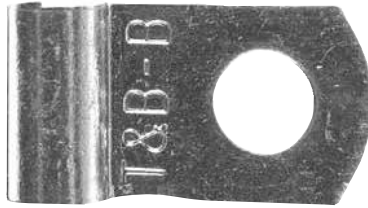


Flag Terminals

Non-Insulated Flags

Wire Termination — Sta-Kon® Wire Termination & Insulation



CAT. NO.	PKG. QTY.	WIRE RANGE	BOLT HOLE	REC. TOOL	DIMENSIONS				STOCK THICK.	
					A	B	C	M		
AB14-6A	100	22-14	#6	ERG4004	.55	.31	.22	.39	.03	
AB51	1,000	22-14	#6		.55	.31	.22	.39		
AB14-8A	100	22-14	#8		.55	.31	.22	.39		
AB52	1,000	22-14	#8		.55	.31	.22	.39		
AB14-10A	100	22-14	#10		.55	.31	.22	.39		
AB53	1,000	22-14	#10		.55	.31	.22	.39		
C51	500	12-10	#6	WT129	.66	.31	.25	.48	.04	
C10-8A	50	12-10	#8		.66	.31	.25	.48		
C52	500	12-10	#8		.66	.31	.25	.48		
C10-10A	50	12-10	#10		.66	.31	.25	.48		
C53	500	12-10	#10		.66	.31	.25	.48		
D236	200	8	#10		13642M	.83	.50	.25		.59
D226	200	8	#10	.90		.50	.29	.64		
D271	200	8	1/4"	.92		.50	.33	.68		
E226	200	6	#10	.93		.50	.29	.69		
E271	200	6	1/4"	.99		.50	.33	.73		
E272	200	6	5/16"	1.05		.50	.41	.81		
F226	200	4	#10	1.07		.56	.33	.80	.07	
F271	200	4	1/4"	1.10		.63	.33	.80		
F272	200	4	5/16"	1.18		.63	.41	.88		
F273	200	4	3/8"	1.20		.63	.43	.90		
G671	100	2	1/4"	13642M	1.20	.63	.33	.89	.08	
G672	100	2	5/16"		1.28	.63	.41	.97		
G673	100	2	3/8"		1.32	.63	.46	1.02		
H672	50	1/0	5/16"		1.31	.63	.41	1.01		.10
H673	50	1/0	3/8"		1.36	.63	.46	1.06		
J672	50	2/0	5/16"		1.46	.75	.41	1.10		
J673	50	2/0	3/8"		1.51	.75	.46	1.15		
J675	50	2/0	1/2"		1.67	.75	.55	1.24		
K672	50	3/0	5/16"		1.59	.81	.41	1.19		
K673	50	3/0	3/8"		1.64	.81	.46	1.24		
K675	50	3/0	1/2"	1.76	.81	.55	1.34			
M673	50	250kcmil	3/8"	1.89	1.0	.46	1.43	.13		
M675	50	250kcmil	1/2"	1.99	1.0	.55	1.52			