

Isoline

ISOLINE 3380MM 4K WD 5C

0042533



Product features

- Isoline LED linear luminaire for industrial and commercial applications. 3380 mm length with wide optics provide homogeneous light distribution for open areas. Aluminium housing, RAL 9016. Max + 35 °C operating temperature range, 4000 K, CRI 80, UGR <25, 3 SDCM. 114 W power consumption, 16300 lm luminous flux, 143 lm/W efficacy, 3380 mm x 62 mm x 59 mm (L x W x H) dimensions, IP20, IK03, 220-240 V 50/60 Hz, Class I. Lifespan L70:B50 60,000 hours.



PRODUCT OVERVIEW

Product name	ISOLINE 3380MM 4K WD 5C
Technology	LED
Cap/Base	N/A
Housing	Aluminium
Mount	Suspended
Fixture rating	Enclosed
General application	Logistics & Industry
ETIM Class	EC000986
Warranty	5 years
Fixture luminous flux (lm)	16300
Luminous flux (lm)	16300
Luminaire efficacy (lm/W)	143
Colour temperature (K)	4000
Colour Code	840
CRI (Ra)	80
Colour Variation Initial (SDCM)	SDCM3
Beam Angle (°)	90
Glare control	< 25
Photobiological Risk Group	RG1
Total power consumption (W)	114
Electrical protection	Class I
Control gear type	LED driver constant current
Dimmable	No
Dimming method	N/A
LED Flickering Rate	Ultra low (5% or less)
Housing colour	RAL 9016 - Traffic white / Bezel
IP rating	IP20
IK rating	IK03
Product EAN number	5410288425337

DATA TABLE

Isoline

ISOLINE 3380MM 4K WD 5C

0042533

General data

Product name	ISOLINE 3380MM 4K WD 5C
Technology	LED
Cap/Base	N/A
Housing	Aluminium
Mount	Suspended
Fixture rating	Enclosed
General application	Logistics & Industry
Operating temperature range (°C)	0°C...+35°C
ETIM Class	EC000986
Warranty	5 years

Optical data

Fixture luminous flux (lm)	16300
Luminous flux (lm)	16300
Luminaire efficacy (lm/W)	143
Colour temperature (K)	4000
Colour Code	840
CRI (Ra)	80
Colour Variation Initial (SDCM)	SDCM3
Beam Angle (°)	90
Glare control	< 25
Photobiological Risk Group	RG1

Electrical data

Total power consumption (W)	114
Mains voltage (V)	220-240V
Lamp power factor	0.95
THD (at 230 V, 50 Hz, full load, at 100% dimming level) xx.x %	10
Electrical protection	Class I
Control gear required	No
Control gear type	LED driver constant current
Dimmable	No
Dimming method	N/A
Drive current (mA)	250
Inrush Current (A)	25
Inrush Duration (µs)	250
Glow Wire Test (°C)	650
Energy Efficiency Class (A->G) of contained light source	C
Nominal Frequency (Hz)	50/60Hz
LED Flickering Rate	Ultra low (5% or less)
Max. Luminaires per 10A C Breaker	13
Max. Luminaires per 13A C Breaker	17
Max. Luminaires per 16A C Breaker	22
Max. Luminaires per 20A C Breaker	29
Max. Luminaires per 10A B Breaker	8
Max. Luminaires per 13A B Breaker	10
Max. Luminaires per 16A B Breaker	13

Isoline ISOLINE 3380MM 4K WD 5C 0042533

Max. Luminaires per 20A B Breaker 17

Lifetime data

Lifespan L70 B50	60000
Lifespan L80 B10	60000
Lifespan L90 B10	31500

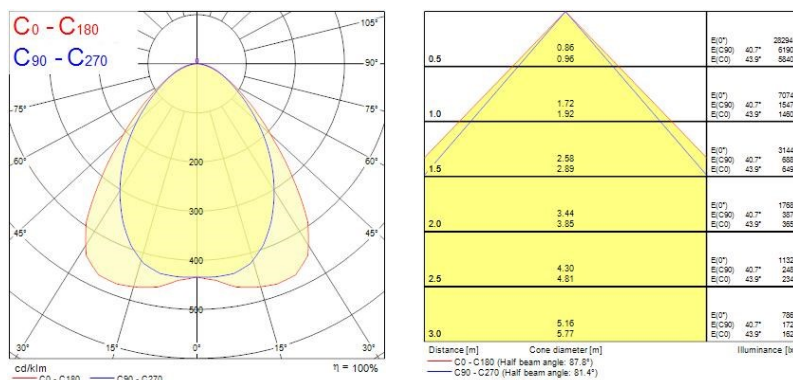
Physical data

Housing colour	RAL 9016 - Traffic white / Bezel
IP rating	IP20
IK rating	IK03
IK rating of sensor	IK03
Diffuser finish	Transparent
Diffuser material	PMMA Acrylic
Nominal Product Length (mm)	3380
Nominal Product Width (mm)	62
Nominal Product Height (mm)	59
Weight (kg)	5.0

Packaging

Single packaging type	Mix(80% carton, 20% plastic)
Product EAN number	5410288425337
Packaging single length / height (cm)	353.0
Packaging single width (cm)	6.5
Packaging single depth (cm)	5.8
DUN14 (outer)	05410288425337
Units per outer package	1
Packaging outer length / height (cm)	354.0
Packaging outer width (cm)	7.0
Packaging outer depth (cm)	6.3

PHOTOMETRY



Isoline

ISOLINE 3380MM 4K WD 5C

0042533

TECHNICAL DRAWINGS

