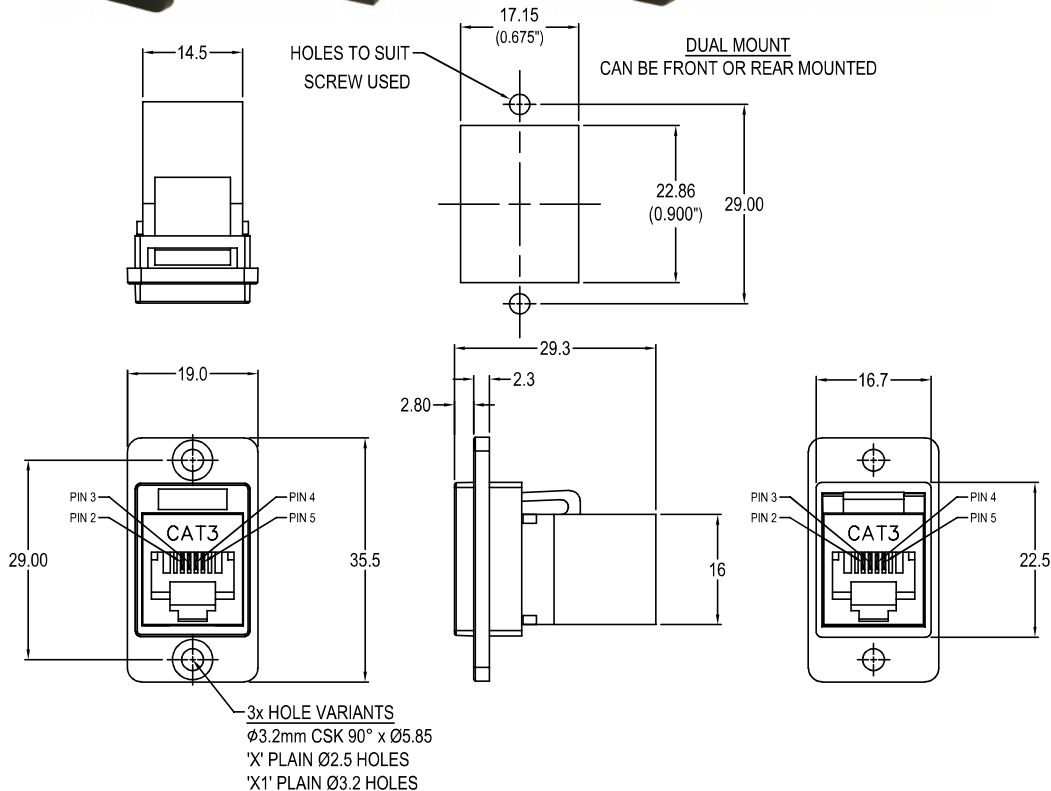


# CLIFF

## DUALSLIM CAT3 RJ11 6P4C FEEDTHROUGH CONNECTOR

Can be front or rear mounted in the panel



### Part No.

**CP30723**

DUALSLIM Cat3 RJ11 6P4C Black plastic frame, CSK holes

**CP30723X**

DUALSLIM Cat3 RJ11 6P4C Black plastic frame, Ø2.5 PLAIN holes

**CP30723X1**

DUALSLIM Cat3 RJ11 6P4C Black plastic frame, Ø3.2 PLAIN holes

### Feedthrough Features

- Fits standard rectangular cutout.
- Front or rear mounting through the panel.
- Various hole mounting options.
- No soldering or punch termination. Use standard cable for each connector style.
- Low rear profile.

### General:

Please note: Functionality is affected by cable quality, length and cable wiring configuration.

### Material:

1. RJ11 In-Line Coupler:  
PC/ABS, UL 94V-0, Black colour
2. RJ11 In-Line Coupler Contact:  
Phosphor Bronze, 3-50 micro inches  
gold plating over nickel plate.
3. PCB: FR4, UL 94V-0
4. Plastic Frame: Polyamide UL94 V-2

### Performance:

1. Operating temperature: Min -10°C Max +60°C