



# Product Change Notification



Product Group: Diodes Division / September 20, 2019 / PCN-DD-023-2019 Rev. 0

## Assembly Site Change for TMBS in TO-263 Wire Bond Package

### DESCRIPTION OF CHANGE:

Vishay Diodes Division is moving the assembly location of TMBS® (Trench MOS Barrier Schottky) rectifiers in wire bond TO-263 package from Vishay Tianjin factory, China to an existing subcontractor in Shandong, China. This existing subcontractor was already introduced before for non-TMBS products in TO-263 package through PCN-DD-001-2018.

Qualification test has been confirmed to meet and pass all specifications for commercial grade. The datasheet spec. including package outline dimensions remain unchanged and the finished good appearance and reel packing variance are shown in annex. There will be no change in form, fit or function of final products.

**CLASSIFICATION OF CHANGE:** Assembly Site

**REASON FOR CHANGE:** Manufacturing capacity consolidation for future expansion.

### EXPECTED INFLUENCE ON QUALITY/RELIABILITY/PERFORMANCE:

There will be no effect on quality & reliability performance.

**PRODUCT CATEGORY:** Rectifiers

**PART NUMBERS/SERIES/FAMILIES AFFECTED:** Involved part numbers are listed in below table.

MBRB10100CT-E3/4W	VB20120C-M3/4W	VB30150C-E3/4W	VBT1060C-E3/4W	VBT3045CBP-E3/4W
MBRB10100CT-E3/8W	VB20120C-M3/8W	VB30150C-E3/8W	VBT1060C-E3/8W	VBT3045CBP-E3/8W
MBRB10100CT-M3/4W	VB20120S-E3/4W	VB30150C-M3/4W	VBT1060C-M3/4W	VBT3045CBP-M3/4W
MBRB10100CT-M3/8W	VB20120S-E3/8W	VB30150C-M3/8W	VBT1060C-M3/8W	VBT3045CBP-M3/8W
MBRB1090CT-E3/4W	VB20120SG-E3/4W	VB30200C-E3/4W	VBT1080C-E3/4W	VBT3045C-E3/4W
MBRB1090CT-E3/8W	VB20120SG-E3/8W	VB30200C-E3/8W	VBT1080C-E3/8W	VBT3045C-E3/8W
VBT1045C-M3/4W	VB20120SG-M3/4W	VB30202C-M3/4W	VBT1080C-M3/4W	VBT3060C-E3/4W
VBT1045C-M3/8W	VB20120SG-M3/8W	VB30202C-M3/8W	VBT1080C-M3/8W	VBT3060C-E3/8W
VBT6045CBP-M3/4W	VB20150C-E3/4W	VB40100C-E3/4W	VBT1080S-E3/4W	VBT3060G-E3/4W
VBT6045CBP-M3/8W	VB20150C-E3/8W	VB40100C-E3/8W	VBT1080S-E3/8W	VBT3060G-E3/8W
MBRB10100-E3/4W	VB20150C-M3/4W	VB40100C-E3H/I	VBT1080S-M3/4W	VBT3080C-E3/4W
MBRB10100-E3/8W	VB20150C-M3/8W	VB40100G-E3/4W	VBT1080S-M3/8W	VBT3080C-E3/8W
MBRB10100-M3/4W	VB20150S-E3/4W	VB40100G-E3/8W	VBT1545CBP-E3/4W	VBT3080C-M3/4W
MBRB10100-M3/8W	VB20150S-E3/8W	VB40120C-E3/4W	VBT1545CBP-E3/8W	VBT3080C-M3/8W
MBRB1090-E3/4W	VB20150SG-E3/4W	VB40120C-E3/8W	VBT2045BP-E3/4W	VBT3080S-E3/4W
MBRB1090-E3/8W	VB20150SG-E3/8W	VB40120C-M3/4W	VBT2045BP-E3/8W	VBT3080S-E3/8W
MBRB1090-M3/4W	VB20150S-M3/4W	VB40120C-M3/8W	VBT2045BP-M3/4W	VBT3080S-M3/4W
MBRB1090-M3/8W	VB20150S-M3/8W	VB40150C-E3/4W	VBT2045BP-M3/8W	VBT3080S-M3/8W
MBRB20100CT-E3/4W	VB20200C-E3/4W	VB40150C-E3/8W	VBT2045CBP-E3/4W	VBT4045BP-E3/4W
MBRB20100CT-E3/8W	VB20200C-E3/8W	VB40150C-E3H/I	VBT2045CBP-E3/8W	VBT4045BP-E3/8W
MBRB20100CT-M3/4W	VB20200G-E3/4W	VB40150C-M3/4W	VBT2045CBP-M3/4W	VBT4045BP-M3/4W
MBRB20100CT-M3/8W	VB20200G-E3/8W	VB40150C-M3/8W	VBT2045CBP-M3/8W	VBT4045BP-M3/8W
MBRB2090CT-E3/4W	VB20202C-M3/4W	VB60100C-E3/4W	VBT2045C-E3/4W	VBT4045C-E3/4W
MBRB2090CT-E3/8W	VB20202C-M3/8W	VB60100C-E3/8W	VBT2045C-E3/8W	VBT4045C-E3/8W
MBRB2090CT-M3/4W	VB20202G-M3/4W	VB60120C-E3/4W	VBT2060C-E3/4W	VBT4045C-M3/4W
MBRB2090CT-M3/8W	VB20202G-M3/8W	VB60120C-E3/8W	VBT2060C-E3/8W	VBT4045C-M3/8W
VB10150C-E3/4W	VB30100C-E3/4W	VB60170G-E3/4W	VBT2060C-M3/4W	VBT4060C-E3/4W
VB10150C-E3/8W	VB30100C-E3/8W	VB60170G-E3/8W	VBT2060C-M3/8W	VBT4060C-E3/8W
VB10150C-M3/4W	VB30100S-E3/4W	VBT10200C-E3/4W	VBT2060G-E3/4W	VBT5200-E3/4W
VB10150C-M3/8W	VB30100S-E3/8W	VBT10200C-E3/8W	VBT2060G-E3/8W	VBT5200-E3/8W
VB10150S-E3/4W	VB30100SG-E3/4W	VBT10202C-M3/4W	VBT2080C-E3/4W	VBT5202-M3/4W
VB10150S-E3/8W	VB30100SG-E3/8W	VBT10202C-M3/8W	VBT2080C-E3/8W	VBT5202-M3/8W
VB10150S-M3/4W	VB30100SG-M3/4W	VBT1045BP-E3/4W	VBT2080C-M3/4W	VBT6045CBP-E3/4W
VB10150S-M3/8W	VB30100SG-M3/8W	VBT1045BP-E3/8W	VBT2080C-M3/8W	VBT6045CBP-E3/8W
VB20100C-E3/4W	VB30100S-M3/4W	VBT1045BP-M3/4W	VBT2080S-E3/4W	VBT6045C-E3/4W
VB20100C-E3/8W	VB30100S-M3/8W	VBT1045BP-M3/8W	VBT2080S-E3/8W	VBT6045C-E3/8W
VB20100S-E3/4W	VB30120C-E3/4W	VBT1045CBP-E3/4W	VBT2080S-M3/4W	VBT760-E3/4W
VB20100S-E3/8W	VB30120C-E3/8W	VBT1045CBP-E3/8W	VBT2080S-M3/8W	VBT760-E3/8W
VB20100SG-E3/4W	VB30120S-E3/4W	VBT1045CBP-M3/4W	VBT3045BP-E3/4W	
VB20100SG-E3/8W	VB30120S-E3/8W	VBT1045CBP-M3/8W	VBT3045BP-E3/8W	
VB20120C-E3/4W	VB30120SG-E3/4W	VBT1045C-E3/4W	VBT3045BP-M3/4W	
VB20120C-E3/8W	VB30120SG-E3/8W	VBT1045C-E3/8W	VBT3045BP-M3/8W	



# Product Change Notification



Product Group: Diodes Division / September 20, 2019 / PCN-DD-023-2019 Rev. 0

**VISHAY BRAND:** Vishay General Semiconductor

**TIME SCHEDULE:** Start Conversion Date: December 1<sup>st</sup>, 2019  
Last Time Buy Date from original site: December 20, 2019  
Last Time Shipment Date from original site: March 20, 2020

**SAMPLE AVAILABILITY:** Available upon request.

**PRODUCT IDENTIFICATION:** The manufacturing site code "E" will be added followed by date code (XXXXE/MXXE) for identification of the new assembly site.

**QUALIFICATION DATA:** Available upon request.

**RESPONSE DATE:** This PCN is considered approved, without further notification, unless we receive specific customer concerns before **November 20, 2019** or as specified by contract. Also the generic LTB/LTS schedule could be changed upon specific contract.

**ISSUED BY:** R.S. Chin, Product Marketing Director – Rectifiers (Standard & Schottky)

**For further information, please contact your regional Vishay office.**

**Contact Information:**

**The Americas**

Vishay Semiconductors  
150 Motor Parkway, Suite 101E  
Hauppauge, NY11788 USA  
Phone :631 300 3816  
Fax : 631 300 3843  
[Diodes-Americas@vishay.com](mailto:Diodes-Americas@vishay.com)

**Europe**

Vishay Semiconductors  
Theresienstrasse 2  
D-74072 Heilbronn, Germany  
Phone : +49 7131 67 3364 (or 3365)  
Fax: +49 7131 67 2938  
[Diodes-Europe@vishay.com](mailto:Diodes-Europe@vishay.com)

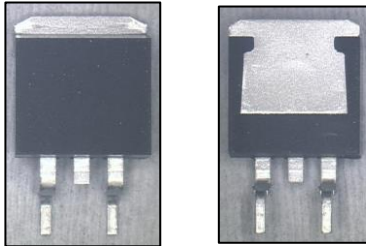
**Asia**

Vishay Semiconductors  
15D, Sun Tong Infoport Plaza  
55 Huai Hai West Road, Shanghai, China  
Phone: +86 138 1787 2112  
Fax: +86 21 5258 7979  
[Diodes-Asia@vishay.com](mailto:Diodes-Asia@vishay.com)

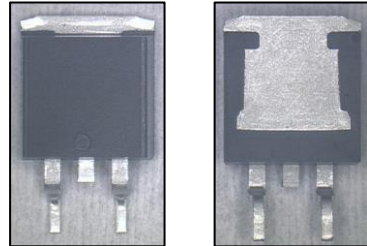
## ANNEX

### TO-263AB Outline

Current



New



### Reel Packing

Current  
(without inner box)



New  
(with inner box)

