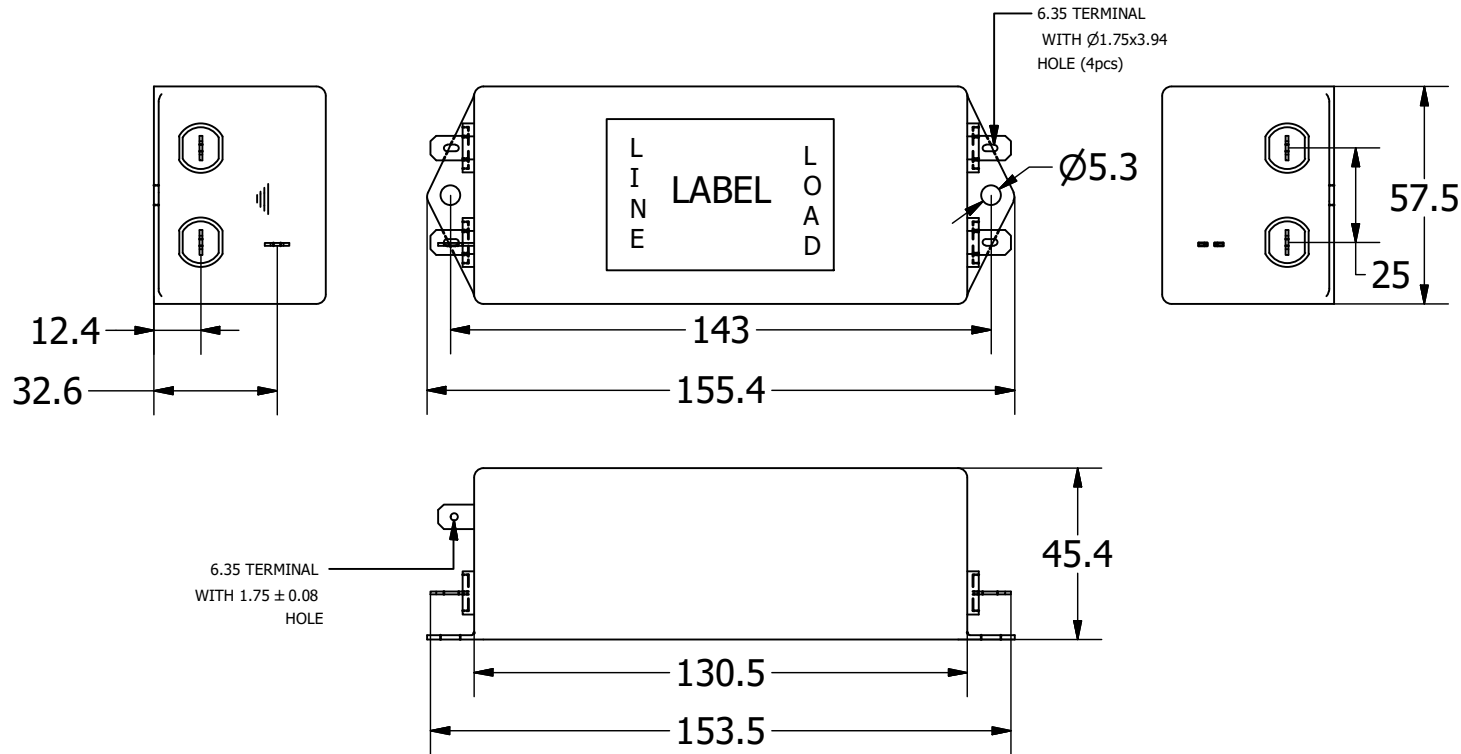


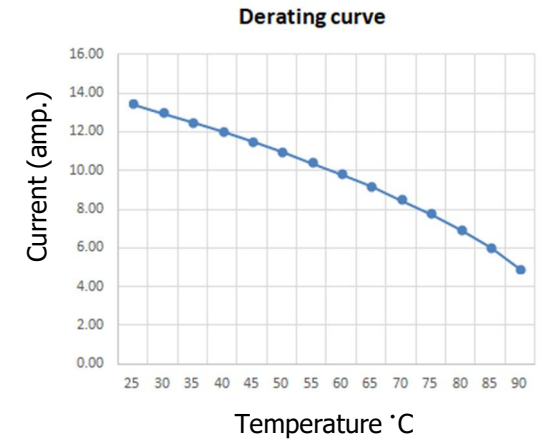
This DWG. is a sole property of ARROW POWER COMPONENTS PVT. LTD. unauthorised use of this DWG. or making product as per DWG. without our permission or any misuse is not permitted.

Mechanical Details



NOTES: UNLESS OTHERWISE SPECIFIED

1	TOLERANCE TO BE ± 1.0 mm.
2	ALL DIMENSIONS ARE IN MM
3	



PRODUCT LABEL

EMC EMV
FILTER

EN2080-12-F
120/250 VAC, 50/60 Hz
12A@40°C
25/100/21

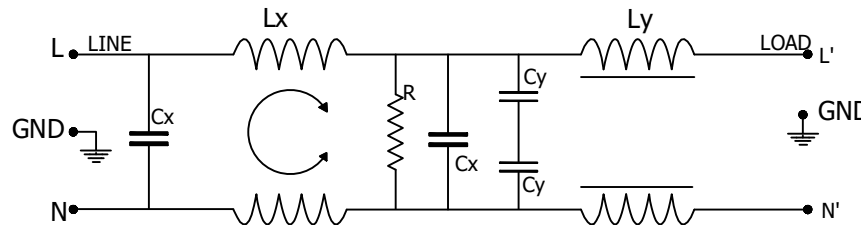
LINE LOAD

UL US CE

SPECIFICATION

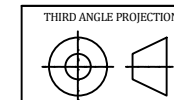
- 1) RATED VOLTAGE (MAX):
12 AMP, 120/250 VAC 50-60HZ;
 - 2) Hi-pot RATING (ONE MINUTE):
LINE TO GROUND: 3000 VDC
LINE TO LINE: 1100 VDC
 - 3) MAXIMUM LEAKAGE LINE TO GROUND:
0.43mA @120 VAC 60 Hz;
0.74mA @250 VAC 50 Hz;
 - 4) CLIMATE CLASS: 25/100/21
- TEMPERATURE RANGE: -25°C to +100°C
OVERLOAD CURRENT: 1.5x Rated ct. for 1 min.

Electrical Schematic



50 ohm - 50 ohm Typical Insertion Loss

FREQUENCY MHZ	0.01	0.1	0.5	1.0	2.0	5.0	10
COMMON DB	9	18	49	59	65	95	66
DIFFERENTIAL DB	10	45	90	72	60	45	44



A	ISSUE	ECN	SUJIT	AJAY	AUG.2019
REV.	DESCRIPTION		DWN	APVD.	APVD. DATE
	ARROW POWER COMPONENTS PVT. LTD. A-40, Wazirpur Industrial Area New Delhi, 110052 Email:- aj@emcemv.com				
DRAWN BY	VERIFIED BY	APPROVED BY	CHECKED DATE		
SUJIT	RISHABH	AJAY	09-AUG-2019		
DESC. SINGLE PHASE SINGLE STAGE FILTER					PAGE 1 Of 1
SERIES	PART NO.				
EN2080	EN2080-12-F				