

HF-Matchbox Red

HF-M RED 109 SH TL/PL-S 230-240V

HF-Matchbox Red is an affordable, reliable, compact, lightweight and high-frequency ballast for use with system wattages below 25 W in combination with TL mini, TL-D, TL5 and TL5c, PL-T/C, and PL-L/S lamps. The HF-M Red range has a robust design, meets all relevant international safety and performance standards and has an energy efficiency index (CELMA EEI) of A2. The ballast is primarily designed for Indoor application. For outdoor application, the luminaire should be minimum Classland need to be sufficiently protected against water & dust. The installation should also be guard against any lightning surge or any other necessary electrical protection as deemed in such typical installation & application.

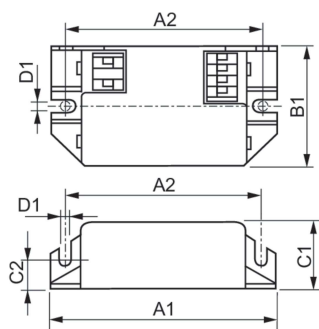
Product data

| Operating and Electrical | |
|--|-----------------|
| Input Voltage | 230 to 240 V |
| Line Frequency | 50 to 60 Hz |
| Input Frequency | 50 to 60 Hz |
| Number of Products on MCB (16A Type B) (Nom) | 159 |
| Wiring | |
| Connector Type Input Terminals | Insert |
| Color Input Terminals | Black |
| Color Output Terminals | Grey |
| Connector Type Output Terminals | Insert |
| Cable Length From Device to Lamp | 1.50 m |
| Temperature | |
| Ambient temperature range | -10 °C to 40 °C |
| T-Case Maximum (Max) | 75 °C |

| Mechanical and Housing | |
|---------------------------------|--|
| Housing | SH |
| Approval and Application | |
| Ingress protection code | IP20 [Finger-protected] |
| Approval Marks | F-Marking CE marking ENEC certificate CB Certificate |
| Product Data | |
| Order product name | HF-M RED 109 SH TL/PL-S 230-240V |
| Full product name | HF-M RED 109 SH TL/PL-S 230-240V |
| Full product code | 871150093142930 |
| Order code | 913700422866 |
| Material Nr. (12NC) | 913700422866 |
| Numerator - Quantity Per Pack | 1 |
| EAN/UPC - Product/Case | 8711500931429 |
| Numerator - Packs per outer box | 50 |
| EAN/UPC - Case | 8711500931436 |

HF-Matchbox Red

Dimensional drawing



| Product | D1 | C1 | C2 | A1 | A2 | B1 |
|-------------------------------------|--------|---------|---------|---------|---------|---------|
| HF-M RED 109 SH TL/PL-S 230-240V | 4.4 mm | 22.0 mm | 10.0 mm | 80.0 mm | 70.0 mm | 40.0 mm |

