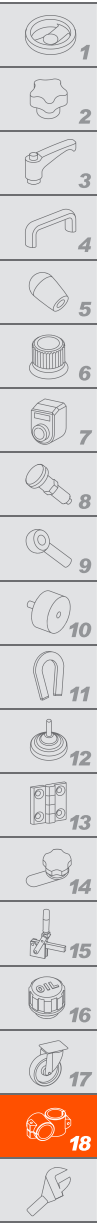


GN 274.1 | Pivoting connecting clamps

for linear actuators, aluminium



MATERIAL

Aluminium, epoxy resin coating, RAL 9005 black colour, matte finish.
AISI 304 stainless steel screw and nut.

STANDARD EXECUTIONS

- **GN 274.1-OZ**: without centering ring.
- **GN 274.1-MZ**: with embossed centering ring.
- **GN 274.1-AV**: with embossed toothing.
- **GN 274.1-IV**: with flush toothing.

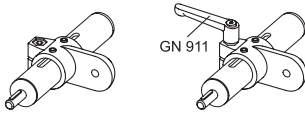
Hole d1:

- **B**: without sliding bushing.
- **G**: with polyamide based (PA) or polytetrafluoroethylene based (PTFE) technopolymer sliding bushing.

FEATURES AND APPLICATIONS

GN 274.1 connecting clamps can normally be matched with the linear actuators.

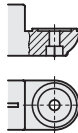
By clamping the guide hole d1 it is possible to adjust the actuator positioning and to lock the slider after having set up the final position. The clamping screws d3 may be replaced by clamping kits GN 911 (see page 1782).



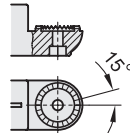
GN 274.1-OZ



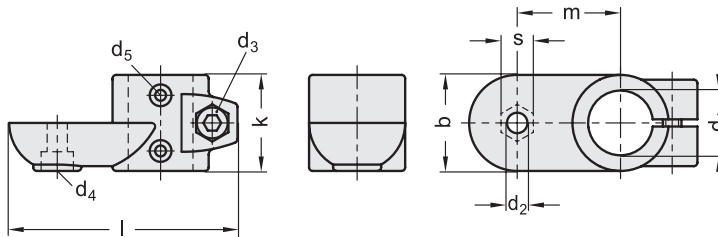
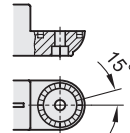
GN 274.1-MZ



GN 274.1-AV



GN 274.1-IV

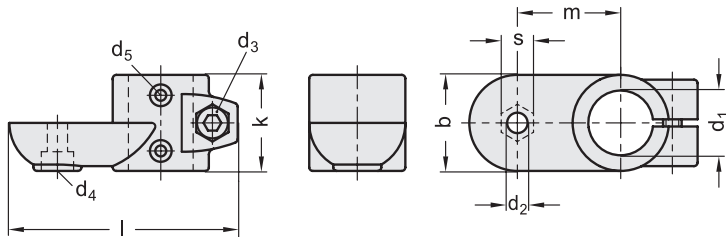


GN 274.1-OZ

Code	Description	d1#	d1##	d2	d3	d4	d5	b	k	l	m	s	d3 Clamping kit	△
GN.58636	GN 274.1-B30-OZ-2-SW	30	-	8.5	M8	M8	M4	40	40	95	43	13	GN 911-M8-32	145
GN.58676	GN 274.1-B40-OZ-2-SW	40	-	10.5	M10	M10	M5	65	65	148	70	17	GN 911-M10-55	700
GN.58716	GN 274.1-B50-OZ-2-SW	50	-	10.5	M10	M10	M6	65	65	148	70	17	GN 911-M10-55	630
GN.58756	GN 274.1-G30-OZ-2-SW	-	30	8.5	M8	M8	M4	40	40	95	43	13	GN 911-M8-32	130
GN.58796	GN 274.1-G40-OZ-2-SW	-	40	10.5	M10	M10	M5	65	65	148	70	17	GN 911-M10-55	670
GN.58836	GN 274.1-G50-OZ-2-SW	-	50	10.5	M10	M10	M6	65	65	148	70	17	GN 911-M10-55	580

Hole without sliding bushing.

Hole with sliding bushing.



GN 274.1-MZ

Code	Description	d1#	d1##	d2	d3	d4	d5	b	k	l	m	s	d3 Clamping kit	⚖️
GN.58626	GN 274.1-B30-MZ-2-SW	30	-	8.5	M8	M8	M4	40	40	95	43	13	GN 911-M8-32	145
GN.58666	GN 274.1-B40-MZ-2-SW	40	-	10.5	M10	M10	M5	65	65	148	70	17	GN 911-M10-55	700
GN.58706	GN 274.1-B50-MZ-2-SW	50	-	10.5	M10	M10	M6	65	65	148	70	17	GN 911-M10-55	630
GN.58746	GN 274.1-G30-MZ-2-SW	-	30	8.5	M8	M8	M4	40	40	95	43	13	GN 911-M8-32	130
GN.58786	GN 274.1-G40-MZ-2-SW	-	40	10.5	M10	M10	M5	65	65	148	70	17	GN 911-M10-55	670
GN.58826	GN 274.1-G50-MZ-2-SW	-	50	10.5	M10	M10	M6	65	65	148	70	17	GN 911-M10-55	580

GN 274.1-AV

Code	Description	d1#	d1##	d2	d3	d4	d5	b	k	l	m	s	d3 Clamping kit	⚖️
GN.58606	GN 274.1-B30-AV-2-SW	30	-	8.5	M8	M8	M4	40	40	95	43	13	GN 911-M8-32	145
GN.58646	GN 274.1-B40-AV-2-SW	40	-	10.5	M10	M10	M5	65	65	148	70	17	GN 911-M10-55	700
GN.58686	GN 274.1-B50-AV-2-SW	50	-	10.5	M10	M10	M6	65	65	148	70	17	GN 911-M10-55	630
GN.58726	GN 274.1-G30-AV-2-SW	-	30	8.5	M8	M8	M4	40	40	95	43	13	GN 911-M8-32	130
GN.58766	GN 274.1-G40-AV-2-SW	-	40	10.5	M10	M10	M5	65	65	148	70	17	GN 911-M10-55	670
GN.58806	GN 274.1-G50-AV-2-SW	-	50	10.5	M10	M10	M6	65	65	148	70	17	GN 911-M10-55	580

GN 274.1-IV

Code	Description	d1#	d1##	d2	d3	d4	d5	b	k	l	m	s	d3 Clamping kit	⚖️
GN.58616	GN 274.1-B30-IV-2-SW	30	-	8.5	M8	M8	M4	40	40	95	43	13	GN 911-M8-32	145
GN.58656	GN 274.1-B40-IV-2-SW	40	-	10.5	M10	M10	M5	65	65	148	70	17	GN 911-M10-55	700
GN.58696	GN 274.1-B50-IV-2-SW	50	-	10.5	M10	M10	M6	65	65	148	70	17	GN 911-M10-55	630
GN.58736	GN 274.1-G30-IV-2-SW	-	30	8.5	M8	M8	M4	40	40	95	43	13	GN 911-M8-32	130
GN.58776	GN 274.1-G40-IV-2-SW	-	40	10.5	M10	M10	M5	65	65	148	70	17	GN 911-M10-55	670
GN.58816	GN 274.1-G50-IV-2-SW	-	50	10.5	M10	M10	M6	65	65	148	70	17	GN 911-M10-55	580

Hole without sliding bushing.

Hole with sliding bushing.

