

PIXER RECESSED 325x325

PIXER RECESSED 325X325 HO 1P 4000K DALI

2069342



Product features

- PIXER RECESSED 325X325 HO 1P 4000K DALI is a high performance low glare office luminaire with an adjustable light pod to enhance architectural design. Diffuser is made of optical grade polycarbonate with an optical film for high efficacy and excellent glare control. Suitable for offices where aesthetics is important. Ceiling recessed 300x300mm, White colour - RAL9010. DALI dimmable, 4000K Warm White LED, CRI>80, chromaticity tolerance of 3-step MacAdam ellipse. Lumen package of 1350 lm, total power consumption 12W, efficacy 113lm/W. Lifespan 67,000 hours L90B10. UGR<19. IK07, IP20. Electrical protection: Class II. Glow wire test 850°C.



PRODUCT OVERVIEW

Product name	PIXER RECESSED 325X325 HO 1P 4000K DALI
Technology	LED
Housing	Steel
Mount	Ceiling recessed mounting
Fixture rating	Enclosed
General application	Education, Hospitality, Office
ETIM Class	EC002892
Warranty	5 years
Fixture luminous flux (lm)	1350
Luminaire efficacy (lm/W)	113
LOR (%)	100
Colour temperature (K)	4000
Light colour	Neutral White
CRI (Ra)	80
Colour Variation Initial (SDCM)	SDCM3
Glare control	< 19
Photobiological Risk Group	RG0
Total power consumption (W)	12
Electrical protection	Class II
Control gear type	Electronic ballast
Control gear mounting	Remote
Dimmable	Yes
Dimming method	DALI
Housing colour	RAL 9016 - Traffic white / Bezel
IP rating	IP20
IK rating	IK07
Product EAN number	5025768693429

DATA TABLE

General data

Product name	PIXER RECESSED 325X325 HO 1P 4000K DALI
--------------	---

Pixer Recessed 325x325

PIXER RECESSED 325X325 HO 1P 4000K DALI
2069342

Technology	LED
Housing	Steel
Mount	Ceiling recessed mounting
Fixture rating	Enclosed
General application	Education, Hospitality, Office
Performance ambient temperature Tq (°C)	25
ETIM Class	EC002892
Warranty	5 years

Optical data

Fixture luminous flux (lm)	1350
Luminaire efficacy (lm/W)	113
LOR (%)	100
Colour temperature (K)	4000
Light colour	Neutral White
CRI (Ra)	80
Colour Variation Initial (SDCM)	SDCM3
Glare control	< 19
Photobiological Risk Group	RG0

Electrical data

Total power consumption (W)	12
Mains voltage (V)	220-240V
Lamp power factor	0.98
Electrical protection	Class II
Control gear type	Electronic ballast
Control gear mounting	Remote
Dimmable	Yes
Dimming method	DALI
Drive current (mA)	350
Inrush Current (A)	18
Inrush Duration (µs)	140
Glow Wire Test (°C)	650
Nominal Frequency (Hz)	50/60Hz
Max. Luminaires per 10A C Breaker	36
Max. Luminaires per 13A C Breaker	50
Max. Luminaires per 16A C Breaker	60
Max. Luminaires per 20A C Breaker	76
Max. Luminaires per 10A B Breaker	22
Max. Luminaires per 13A B Breaker	30
Max. Luminaires per 16A B Breaker	36
Max. Luminaires per 20A B Breaker	46

Lifetime data

Lifespan L70 B50	120000
Lifespan L80 B20	120000
Lifespan L90 B10	67000

Pixer Recessed 325x325

PIXER RECESSED 325X325 HO 1P 4000K DALI
2069342

Physical data

Housing colour	RAL 9016 - Traffic white / Bezel
IP rating	IP20
IK rating	IK07
Diffuser finish	Transparent
Diffuser material	PMMA Acrylic
Nominal Product Length (mm)	320
Nominal Product Width (mm)	320
Nominal Product Height (mm)	76
Weight (kg)	2.5
Recessed Depth (mm)	150

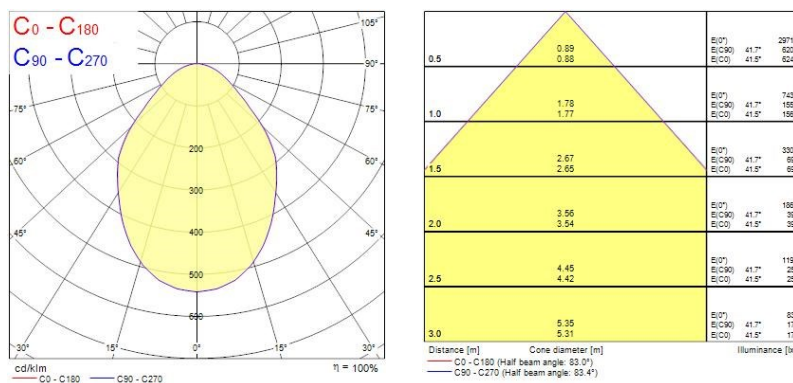
Packaging

Single packaging type	Carton
Product EAN number	5025768693429
Packaging single length / height (cm)	44.0
Packaging single width (cm)	42.0
Packaging single depth (cm)	9.5
DUN14 (outer)	05025768693429
Units per outer package	1
Packaging outer length / height (cm)	44.0
Packaging outer width (cm)	42.0
Packaging outer depth (cm)	9.5

Safety data

Dry applications use only	Yes
---------------------------	-----

PHOTOMETRY



TECHNICAL DRAWINGS

Pixer Recessed 325x325

PIXER RECESSED 325X325 HO 1P 4000K DALI

2069342

