

Standard jaw type SGN

Accessories for high-pressure machine vices, art. no.: 28880 and 28832



Application:

Reversible jaws for universal use according to requirements.

Execution:

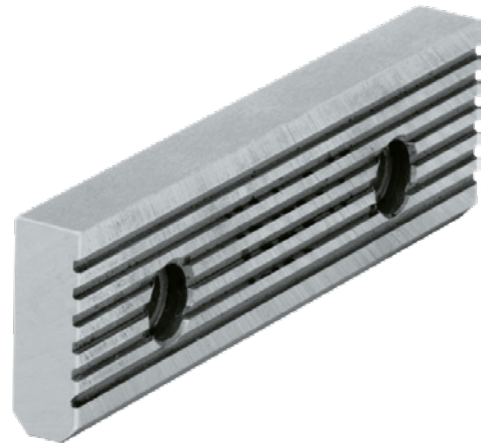
- One side grooved and one side smooth.
- Hardened and ground.

Advantage:

- Reversible.

Delivery:

1x standard jaw SGN; incl. fastening screws



Art. no.	28885 035
Brand	RÖHM
Manufacturer Part Number	152754
Jaw design	Standard jaw, Grooved, Smooth
Jaws width	135 mm
Jaws thickness	18 mm
Jaws height	39.6 mm
Gross Weight	0.635 kg
Product Group	203

EAN

4019208054087