

- > **Port size: DN 15 ... 25, 1/2" ... 1" (ISO G/NPT)**
- > **Optical position indicator is standard**
- > **Damped closing (Valves closes against flow direction)**
- > **Suitable for contaminated flow fluid**
- > **Suitable for vacuum up to max. 90%**
- > **Reversed flow direction optional**
- > **High flow rate**
- > **Option pressure actuated by external liquid fluid**



Technical features

Medium:

Neutral gases and liquids

Pilot fluid:

Neutral gases max. +60°C (+140°F)

Switching function:

Normally closed

Operation:

Pressure actuated by external fluid

Mounting position:

Optional

Flow direction:

Determined

Port size:

G1/2, G3/4, G1 1/2 NPT, 3/4 NPT, 1 NPT

Pilot connection:

G1/4 or 1/4 NPT

Operating pressure:

See table

Pilot pressure:

3,5 ... 10 bar (51 ... 145 psi)

Fluid temperature:

-10° ... +180°C (+14° ... +356°F)

Ambient temperature:

-10° ... +60°C (+32° ... +140°F)

Material:

Process fluid characteristics:

Body: Dezincification brass (CW602N)

Seat seal: PTFE

Internal parts: Brass, Stainless steel

Spindle sealing: PTFE / FPM; self-adjustable

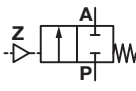
Pilot fluid characteristics:

Body: Polyamid 66 with glass fibre 30%

Seat Seals: NBR

Internal parts: Brass, Stainless steel

Technical data - standard models

| Symbol | Port size | Orifice (mm) | Flow kv value *1) (m³/h) | Operating pressure *2) (bar) | Weight (kg) *3) | Model *3) |
|---|-----------|--------------|--------------------------|------------------------------|-----------------|--------------------|
|  | G1/2 | 15 | 4,8 | 0 ... 16 | 1,3 | 8472200.0000.00000 |
| | 1/2 NPT | 15 | 4,8 | 0 ... 16 | 1,3 | 8473200.0000.00000 |
| | G3/4 | 20 | 10 | 0 ... 8 | 1,4 | 8472300.0000.00000 |
| | 3/4 NPT | 20 | 10 | 0 ... 8 | 1,4 | 8473300.0000.00000 |
| | G1 | 25 | 14 | 0 ... 5 | 1,7 | 8472400.0000.00000 |
| | 1 NPT | 25 | 14 | 0 ... 5 | 1,7 | 8473400.0000.00000 |

*1) Cv-value (US) ≈ kv value x 1,2

*2) For gases and liquid fluids up to 600 mm²/s (cSt)

*3) Without pilot valve

Option selector

847★★★★.0000.00000

| Thread form | Substitute |
|-------------|------------|
| ISO G | 2 |
| NPT | 3 |

| Port size | Substitute |
|-----------|------------|
| 1/2" | 2 |
| 3/4" | 3 |
| 1" | 4 |

| Further options (Valves) | Substitute |
|---|------------|
| Normally open (NO), closes with pilot pressure and opens with spring force (pilot pressure 1 ... 10 bar) | 01 |
| Double acting, 4/2 or 5/2-way-pilot valve required | 08 |
| Electrical position indicator with 2 micro-switches protection class IP 67, LED, 2 m cable LiYY 2 x 0,25 qmm Type: NAMUR DIN EN 60947-5-6 | 23 |
| NAMUR interface plate | 50 |

Notes

for 3/2-way pilot valve 84660 / 84680

| | |
|-------------------------|----------------------------------|
| Material | Body Aluminium |
| Pilot fluid temperature | max. +60°C |
| Pilot pressure | 1 ... 10 bar |
| Standard voltages | 24 V d.c., 24 V a.c., 230 V a.c. |

Notes

for 3/2-way pilot valve 97100 hole pattern NAMUR

| | |
|-------------------------|----------------------------------|
| Material | Body Aluminium elox |
| Pilot fluid temperature | -10 ... +50°C (+14 ... +122°F) |
| Pilot pressure | 2 ... 8 bar |
| Standard voltages | 24 V d.c., 24 V a.c., 230 V a.c. |

Electrical Data

for 3/2-way pilot valve 84660 / 84680

| | |
|------------------|---|
| Design acc. to | DIN VDE 0580 |
| Voltage range | ±10% |
| Duty cycle | 100% ED |
| Protection class | EN 60529 IP65 with mounted socket |
| Socket | Form A acc. to DIN EN 175301-803 (included) |
| Technical data | See publication N/en 5.8.640 |

Electrical Data

for 3/2-way pilot valve 97100 hole pattern NAMUR

| | |
|------------------|---|
| Design acc. to | DIN VDE 0580 |
| Voltage range | ±10% |
| Duty cycle | 100% ED |
| Protection class | EN 60529 IP65 with mounted socket |
| Socket | Form A acc. to DIN EN 175301-803 (included) |
| Technical data | See publication N/en 5.4.372 |

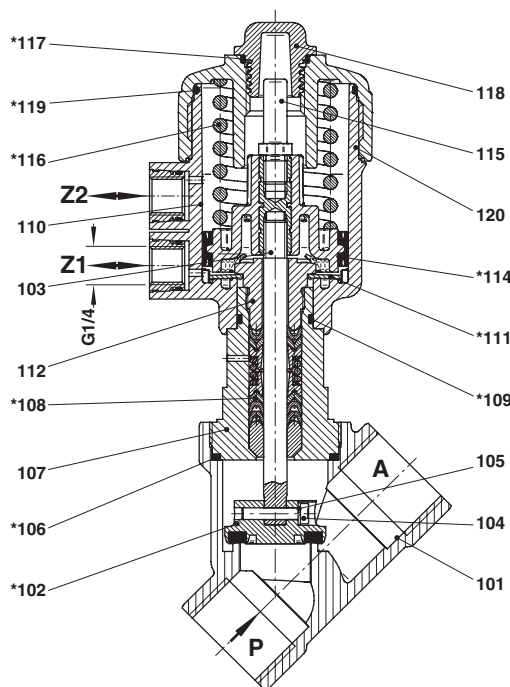
Further versions on request!

Mounting accessories (NAMUR)

Interface plate NAMUR hole pattern for retrofit (Part-Number 1256566) consist of:
1x NAMUR-interface plate; 2x Adapter screw; 2x O-ring

Section View

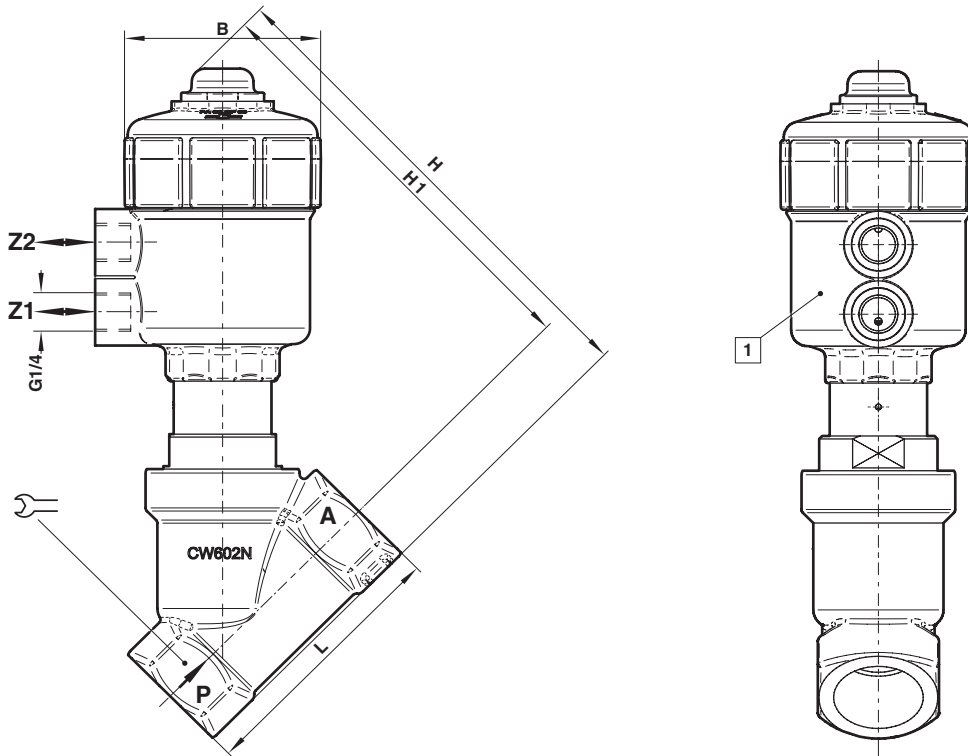
G1/2 ... 1
1/2 ... 1 NPT




| No. | Description |
|------|---|
| 101 | Valve body |
| *102 | Valve plate |
| 103 | Valve spindle, complete |
| 104 | Cheese head cap screw |
| 105 | Spring washer |
| *106 | Seal ring |
| 107 | Screw piece |
| *108 | Seal packing |
| *109 | O-ring |
| 110 | Control head housing cover, bottom part |
| *111 | Cup spring |
| 112 | Screw piece |
| *113 | Pressure spring |
| *114 | Cylinder packing |
| 115 | Signal pin |
| *116 | Pressure spring |
| *117 | O-ring |
| 118 | Cover cap |
| *119 | O-ring |
| 120 | Control head housing cover |
| 122 | Pressure spring |

* These individual parts form a complete wearing unit.
When ordering spare parts please state Model No. and Series No.

Dimensions
G1/2 ... 1
1/2 ... 1 NPT

 Dimensions in mm
 Projection/First angle


1 Actuator may be rotated 360°

| Port size | B | H | H1 | L |  | Model |
|-----------|----|-----|-------|----|---|--------------------|
| G1/2 | 66 | 154 | 140,5 | 65 | 27 | 8472200.0000.00000 |
| 1/2 NPT | 66 | 154 | 140,5 | 65 | 27 | 8473200.0000.00000 |
| G3/4 | 66 | 160 | 144,5 | 75 | 32 | 8472300.0000.00000 |
| 3/4 NPT | 66 | 160 | 144,5 | 75 | 32 | 8473300.0000.00000 |
| G1 | 66 | 171 | 150,5 | 90 | 41 | 8472400.0000.00000 |
| 1 NPT | 66 | 171 | 150,5 | 90 | 41 | 8473400.0000.00000 |

Note to Pressure Equipment Directive (PED):

The valves of this series, including the connection size DN 25 (G 1), are according to Art. 3 § 3 of the Pressure Equipment Directive (PED) 97/23/EG. This means interpretation and production are in accordance to engineers practice wellknown in the member countries.

The CE-sign at the valve refers not to the PED. Thus the declaration of conformity is not longer applicable for this directive.

For valves > DN 25 (G 1) Art. 3 § (1) No.1.4 applies.

The basic requirements of the Enclosure I of the PED must be fulfilled.

The CE-sign at the valve includes the PED. A certificate of conformity of this directive will be available on request.

Note to Electromagnetic Compatibility Guideline (EEC):

The valves shall be provided with an electrical circuit which ensures the limits of the harmonised standards EN 61000-6-3 and EN 61000-6-1 are observed, and hence the requirements of the Electromagnetic Compatibility Guideline (2004/108/EG) satisfield.