

STANDARD EXECUTIONS

- **GN 722.1-ST**: Body made out of black-oxide steel for welding, cast zinc-plated steel lever, AISI 301 stainless steel spring.

Zinc-plated steel plunger.

- **GN 722.1-A4**: body and lever made out of cast AISI 316 stainless steel for welding, AISI 316Ti stainless steel spring.

AISI 316 stainless steel plunger.

Hole for the plunger insertion: suggested tolerance $d +0.3 / +0.1$ mm.

FEATURES AND APPLICATIONS

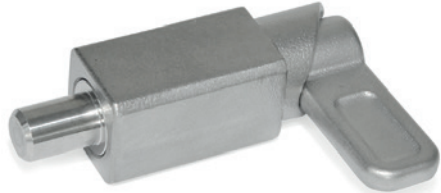
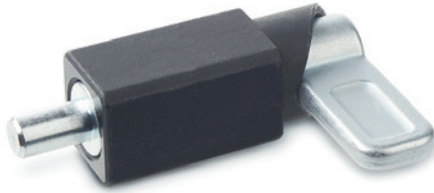
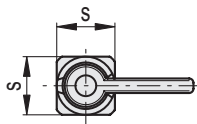
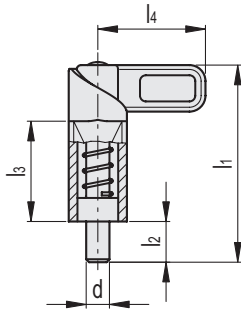
GN 722.1 lever indexing plungers are used when the plunger must be retracted quickly.

By rotating through 180° the lifting lever stops on the notch, keeping the plunger in the retracted position.

Suitable in all cases in which the positioning element must be welded.

To avoid excessive heating with loss of the spring characteristics, it is recommended the fixing by welding points.

The very small dimensional tolerances guarantee the necessary functional safety even in case of dirt.



GN 722.1-ST

Code	Description	d1 Plunger -0.05 -0.25 Hole +0.30 +0.10	l1	l2	l3	l4	s	[N]*	[N]#	⚖
GN.39351	GN 722.1-8-20-A-ST	8	68	14	35	37	20	16	55	120
GN.39352	GN 722.1-10-20-A-ST	10	68	14	35	37	20	16	55	140
GN.39353	GN 722.1-12-20-A-ST	12	68	14	35	37	20	16	55	145
GN.39354	GN 722.1-14-20-A-ST	14	68	14	35	37	20	16	55	140

GN 722.1-A4

Code	Description	d1 Plunger -0.05 -0.25 Hole +0.30 +0.10	l1	l2	l3	l4	s	[N]*	[N]#	⚖
GN.39356	GN 722.1-8-20-A-A4	8	68	14	35	37	20	16	45	120
GN.39357	GN 722.1-10-20-A-A4	10	68	14	35	37	20	16	45	140
GN.39358	GN 722.1-12-20-A-A4	12	68	14	35	37	20	16	45	145
GN.39359	GN 722.1-14-20-A-A4	14	68	14	35	37	20	16	45	140

* Spring preload

Spring maximum load

