

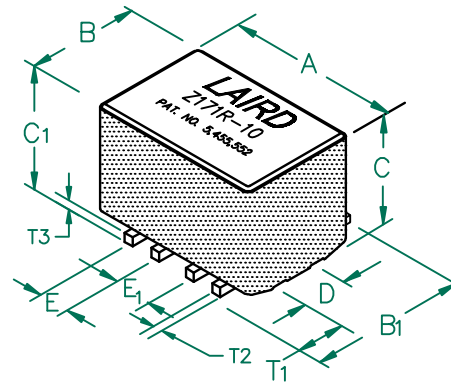
**PHYSICAL DIMENSIONS:**

A	14.48 [ .570 ]	± 0.23 [ .009 ]
B	10.03 [ .395 ]	± 0.15 [ .006 ]
B <sub>1</sub>	11.05 [ .435 ]	MAX
C	9.32 [ .367 ]	± 0.15 [ .006 ]
C <sub>1</sub>	10.49 [ .413 ]	MAX.
D	4.06 [ .160 ]	± 0.13 [ .005 ]
E	2.54 [ .100 ]	± 0.13 [ .005 ]
E <sub>1</sub>	3.43 [ .135 ]	± 0.13 [ .005 ]



# CM5740Z171R-10

**UNCONTROLLED DOCUMENT**



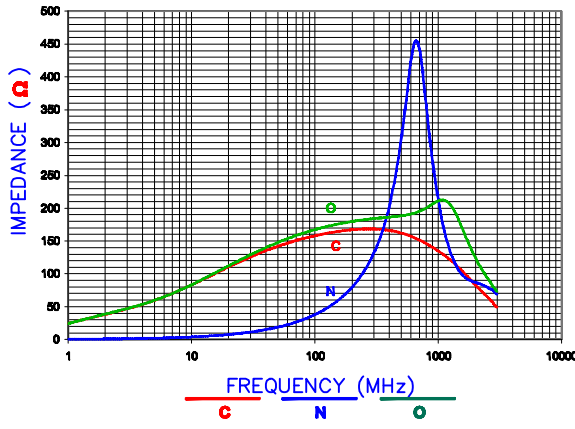
**ELECTRICAL CHARACTERISTICS:**

	Z @ 100MHz (Ω)	DCR (Ω)	Rated Current	Rated Voltage (VDC)
Nominal	170			
Minimum	128			
Maximum	-	0.001	20,000 mA	100

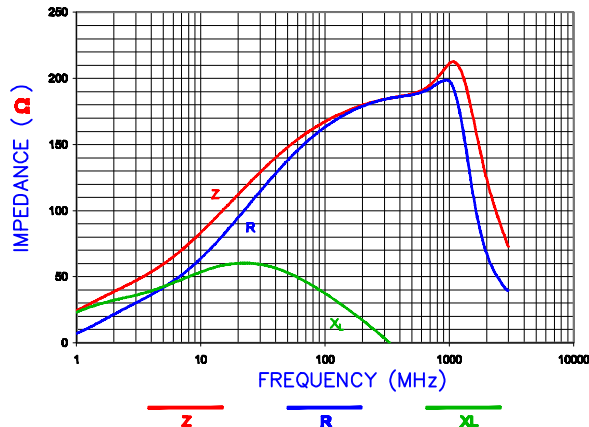
**WIRE:**

T <sub>1</sub>	3.56 [ .140 ]	± 0.25 [ .010 ]
T <sub>2</sub>	0.76 [ .030 ]	TYP.
T <sub>3</sub>	0.76 [ .030 ]	TYP.

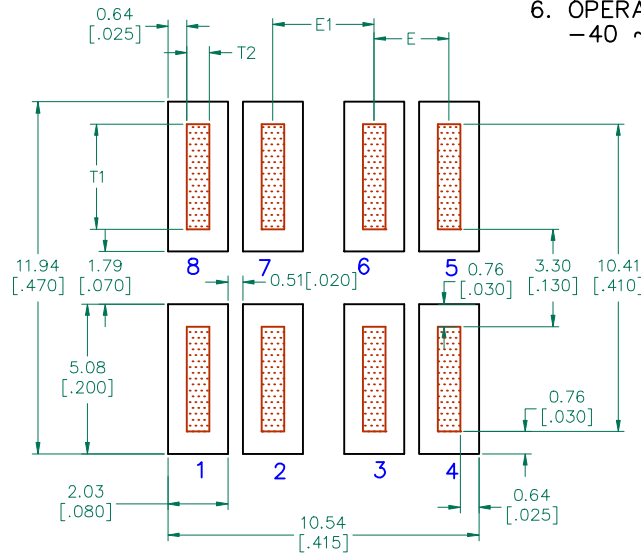
Z vs. FREQUENCY (C,O,N)



Z, R, XL vs. FREQUENCY



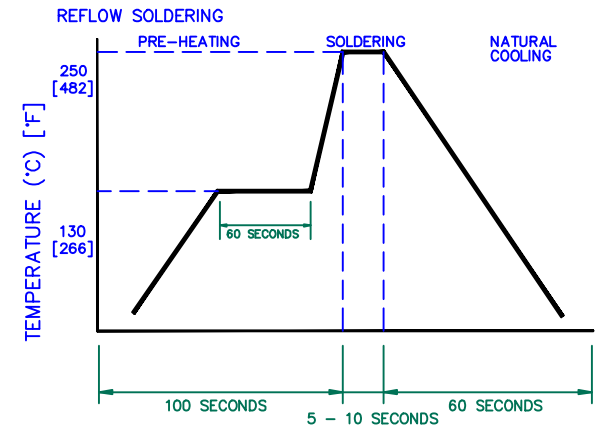
**LAND PATTERNS FOR REFLOW SOLDERING**



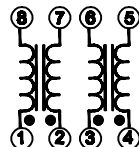
**NOTES: UNLESS OTHERWISE SPECIFIED**

1. TAPED AND REELED per CURRENT EIA SPECIFICATIONS 13" REELS, 375 PCS/REEL.
2. COMPONENTS SHOULD BE ADEQUATELY PREHEATED BEFORE SOLDERING.
3. REF. CARRIER TAPE SPECIFICATION CART5740-6P.
4. TERMINATION FINISH IS 100% TIN.
5. THIS PART HAS NO PIN POLARITY.
6. OPERATION TEMPERATURE (INCLUDING SELF-HEATING): -40 ~ +125°C.

**RECOMMENDED SOLDERING CONDITIONS**



**EQUIVALENT CIRCUIT NO POLARITY**

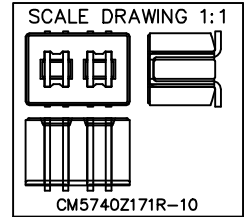
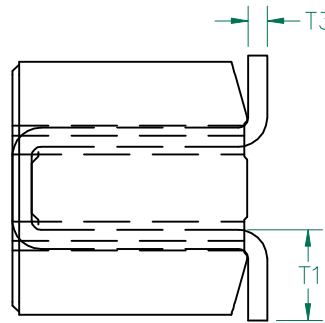
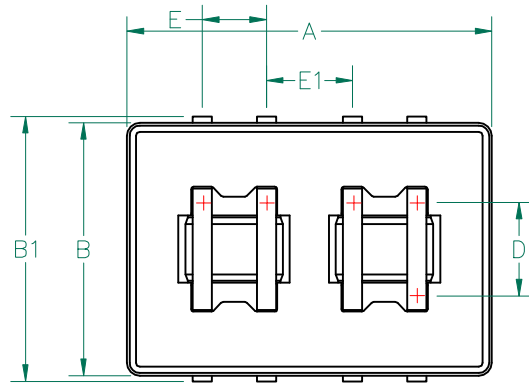


DIMENSIONS ARE IN mm (INCHES).

This print is the property of Laird Tech. and is loaned in confidence subject to return upon request and with the understanding that no copies shall be made without the written consent of Laird Tech. All rights to design or invention are reserved.



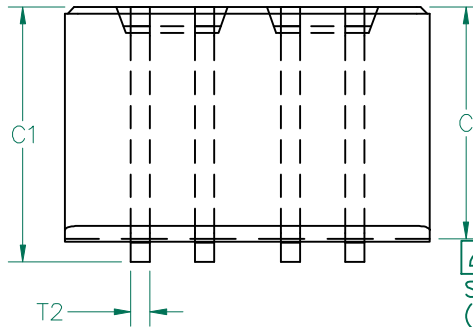
D	ADD RATED VOLTAGE AND NOTE 6	08/30/12	QU	PROJECT/PART NUMBER:	REV	PART TYPE:	DRAWN BY:
C	UPDATE COMPANY LOGO & KAPTON LABEL ADD EQUIVALENT CIRCUIT	11/12/08	JRK	CM5740Z171R-10	D	ASSEMBLY	JRK
B	UPDATE COMPANY LOGO	01/08/08	JRK	DATE: 06/11/04	SCALE:	NTS	SHEET:
A	ORIGINAL DRAFT	06/11/04	JRK	CAD #	TOOL #		
REV	DESCRIPTION	DATE	INT	CM5740Z171R-10-D-2	H0570		2 of 3



CM5740Z171R-10

ELECTRICAL TESTING

TEST:	GROSS	GROSS
	Z	Z
# TURNS	1	1
AWG	22	22
FREQUENCY	25 MHz	100 MHz
NOMINAL	- Ω	170 Ω
MINIMUM	- Ω	128 Ω
WEIGHT/1000	5.85 kgs.	12.89 lbs.



0.10 (.004)  
SEATING PLANE  
(CO-PLANARITY)



DIMENSIONS:

A	14.48 [.570]	+ 0.23 [.009]
B	10.03 [.395]	+ 0.15 [.006]
B <sub>1</sub>	11.05 [.435]	MAX
C	9.32 [.367]	+ 0.15 [.006]
C <sub>1</sub>	10.49 [.413]	MAX.
D	4.06 [.160]	+ 0.13 [.005]
E	2.54 [.100]	+ 0.13 [.005]
E <sub>1</sub>	3.43 [.135]	+ 0.13 [.005]

**UNCONTROLLED DOCUMENT**

WIRE DIMENSIONS:

T <sub>1</sub>	3.56 [.140]	+ 0.25 [.010]
T <sub>2</sub>	0.76 [.030]	TYP.
T <sub>3</sub>	0.76 [.030]	TYP.

NOTES: UNLESS OTHERWISE SPECIFIED

1. WIRE: REFERENCE STEWARD WIRE PURCHASE SPEC. W0040-61.
2. IMPEDANCE VALUES ARE GROSS, MEASURED USING W0040-61 WIRE PLACED AGAINST END OF SLOT w/ NO D.C. BIAS.
3. REFERENCE STEWARD CORE 24H0570-600.
4. NO MORE THAN 0.18 [.007] DIFFERENCE FROM THE LONGEST TO THE SHORTEST CONDUCTOR ON ONE SIDE.
5. TERMINATION FINISH IS 100% TIN.
6. THIS PART HAS NO PIN POLARITY.

DIMENSIONS ARE IN mm (INCHES).				This print is the property of Laird Tech. and is loaned in confidence subject to return upon request and with the understanding that no copies shall be made without the written consent of Laird Tech. All rights to design or invention are reserved.		<b>Laird TECHNOLOGIES</b>	
D	ADD RATED VOLTAGE AND NOTE 6	08/30/12	QIU	PROJECT/PART NUMBER:	REV	PART TYPE:	DRAWN BY:
C	UPDATE COMPANY LOGO & KAPTON LABEL ADD EQUIVALENT CIRCUIT	11/12/08	JRK	CM5740Z171R-10	D	ASSEMBLY	JRK
B	UPDATE COMPANY LOGO	01/08/08	JRK	DATE: 06/11/04	SCALE: NTS	SHEET:	
A	ORIGINAL DRAFT	06/11/04	JRK	CAD #	TOOL #		
REV	DESCRIPTION	DATE	INT	CM5740Z171R-10-D-3	H0570		3 of 3