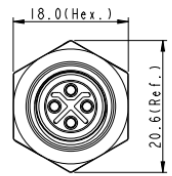
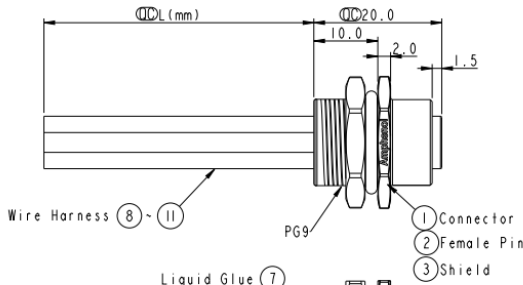


REV.	ECN NO.	DATE	SIGN	DESCRIPTION
A	Initial Release	2015/03/04	Cary	Change Rev. 01 to Rev.A

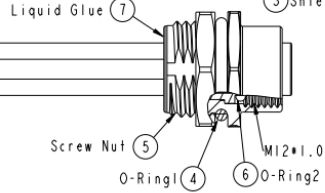
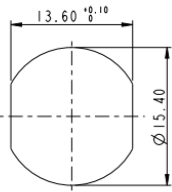
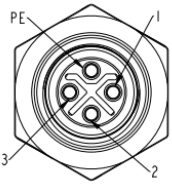
ALTW  
CONFIDENTIAL  
2015-03-04  
R&D DEPT.



M12S-04PFFS-SH8BXX

XX: 150-1500mm  
15: 150mm  
30: 300mm  
50: 500mm  
A0: 1000mm  
A5: 1500mm  
Wire Length(L): 150-1500mm

ALTW  
R&D DEPT.  
CONFIDENTIAL  
2015.04.27  
ISSUED



- Note:
- ∅ Important Dimension.
  - Waterproof Rate: IP68.
  - IP68: 1M Depth Of Water In 24hours.
  - Housing: PA66, UL94V-0, Black.
  - Female Pin: Copper Alloy, Gold Plated.
  - Shield: Zinc Alloy, Nickel Plated.
  - Panel Nut: Zinc Alloy, Nickel Plated.
  - O-Ring1: Viton, Black.
  - O-Ring2: Viton, Green.
  - Wire Harness: UL1015 16AWG(1.5mm<sup>2</sup>).
  - Rated Voltage: 630V AC.
  - Rated Current at 40°C: 12A
  - Operation Temperature: -40-85°C.
  - For Panel Thickness Max 4.5mm.
  - Nut Torque: 4-6 Kgf.cm(0.4-0.6N.m).
  - Wire harness Tolerance: 150-300 ±15mm  
301-1000 ±20mm  
Over 1000 ±40mm

PE	Black	黑
3	Blue	藍
2	White	白
1	Brown	棕
Conn.	Wire Color	Pin Out

UNIT: mm

TOLERANCE	
.x	±0.25
.xx	±0.1
.xxx	±0.05
ANGLES	±1°

TITLE			
M12 S-Code 4Pin Female Type			
SCALE	2:1	SIZE	A4
REV.	A	MC-REV.	A.3
∅: Inspection item			

**Amphenol LTW**  
安費諾亮泰企業股份有限公司

ITEM NO.	DRAWN BY	DATE
ITEM NO.	Cary	2015-03-04
CHK NO.	CHECKED BY	DATE
M12S-04PFFS-SH8BXX	Yu Long	2015-03-04
CUSTOMER	APPROVED BY	DATE
ALTW	Jerry	2015-03-04

THIS DOCUMENT IS SUBJECT TO CHANGE WITHOUT NOTICE. IT IS CONFIDENTIAL AND A PROPERTY OF AMPHENOL LTW. DISCLOSURE TO THIRD PARTY HAS TO BE AUTHORIZED BY AMPHENOL LTW.