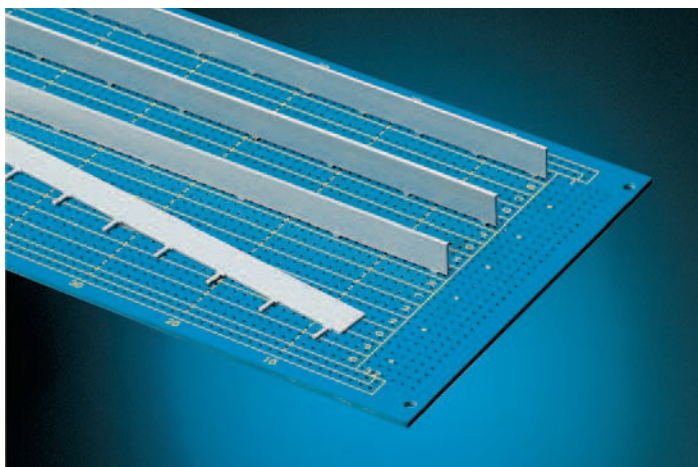


Accessories – Horizontal busbars

PCB busbars



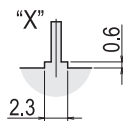
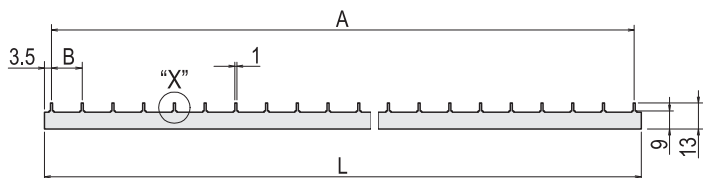
00892008

- Power distribution on printed circuit boards and backplanes
- Fault elimination
- Increases the stiffness of PCBs

Order Information

Width B HP	Length L mm	Dimension A mm	Part no.
3	220.3	14 × 15.24 = 213.36	30925-001
3	342.3	22 × 15.24 = 335.28	30925-002
4	210.2	10 × 20.32 = 203.2	30925-003
4	332.1	16 × 20.32 = 325.12	30925-004
5	210.2	8 × 25.4 = 203.2	30925-005
5	337.2	13 × 25.4 = 330.2	30925-006

Delivery is exclusively in Standard Pack Quantity (SPQ): Please order at least 10 pieces or a multiple. Pricing is per individual item.



A41743

Technical data

Conductor material	E-Cu, tin-plated
Pin dimensions	0.8 × 1.0 mm
Max. operating current	30 A
DC resistance	2.5 mΩ/m

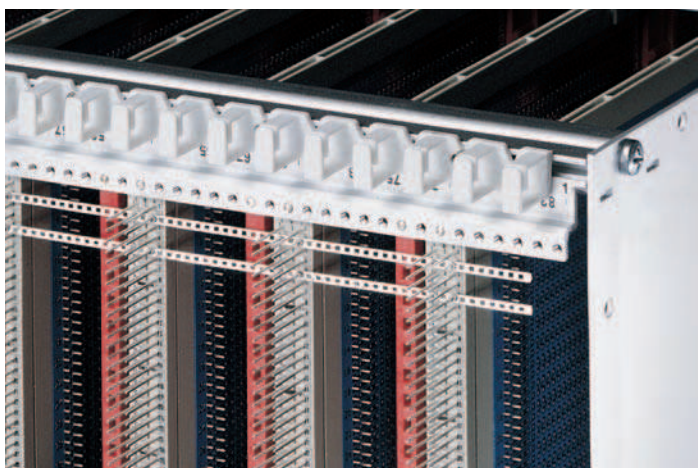
Note

- Special designs available on request



For further information www.schroff.biz/oneclick
oneClick search code = Part no.

Solder strip conductor



00892016

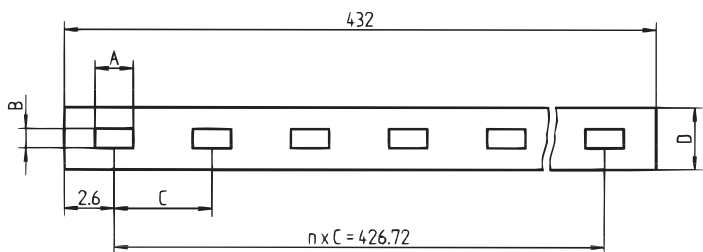
- Efficient linking of connections in the same grid and with the same potential
- Also suitable for EN 60603 (DIN 41612) connectors with wire-wrap pin

Order Information

Connection type	A mm	B mm	C mm	D mm	n	Qty/PU	Part no.
Wire-wrap pins 0.6 × 0.6 mm	1.14	0.9	2.54	2.3	168	1	60800-064
Wire-wrap pins 1.0 × 1.0 mm	1.65	1.4	5.08	3.2	84	1	60800-080

Technical data

Conductor material	E-Cu F30, tin-plated
Max. operating current wire-wrap pins 0.6 × 0.6 mm	≤ 4 A
Max. operating current wire-wrap pins 1.0 × 1.0 mm	≤ 4 A



AZA42390



For further information www.schroff.biz/oneclick
oneClick search code = Part no.