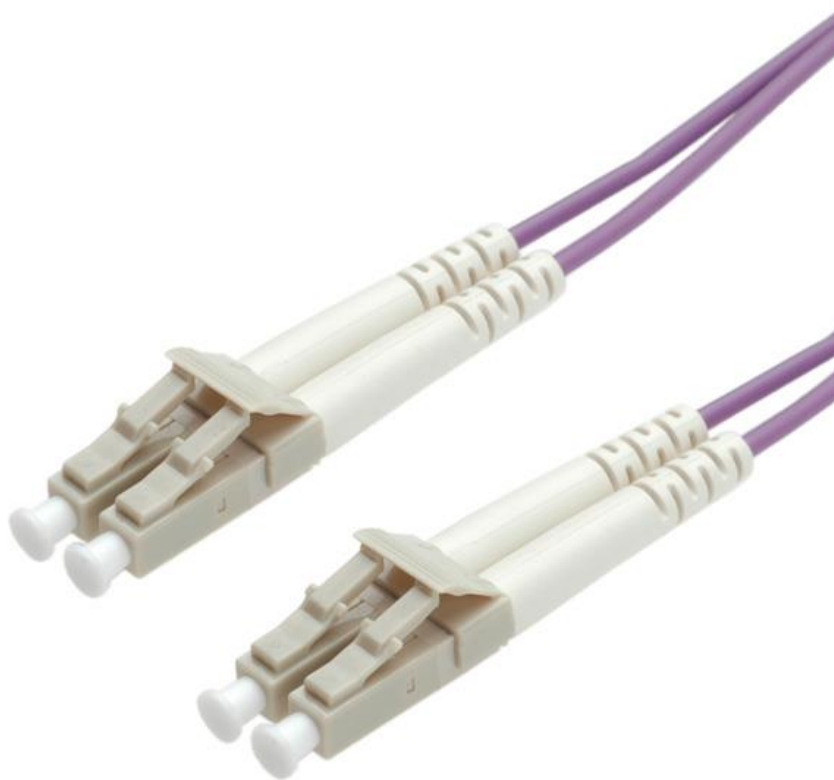




Datenblatt - Fiche technique - Data sheet

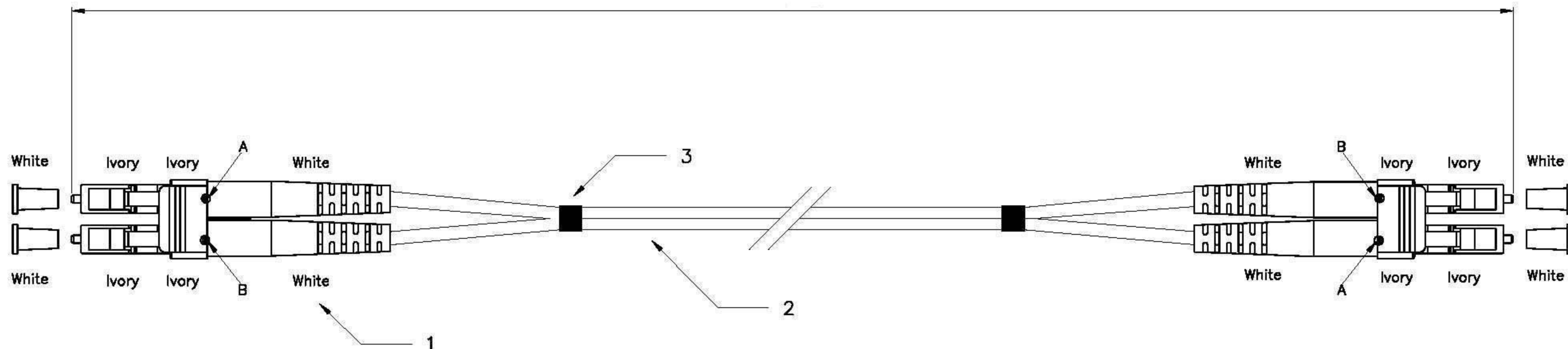
**21.15.8750**



ROLINE LWL-Kabel 50/125 $\mu$ m OM4, LC/LC, violett, 0,5m

ROLINE Câble FO 50/125 $\mu$ m, LC/LC, OM4, violet, 0,5m

ROLINE Fibre Optic Jumper Cable, 50/125  $\mu$ m, LC/LC, OM4, purple, 0.5 m



**Specification:**

1. Connector Type : LC Multimode
2. Cable Type :  
 2-1 Zipcord Cable,  $\phi 2.0\text{mm}$ , 50/125 $\mu\text{m}$  Multimode. (OM4 Corning Fiber)  
 2-2 Calbe Jacket : Purple Color, PVC Material.
3. Shrink Tube

**Performance:**

- a. Insertion Loss : <0.5 dB
- b. Fiber Extention :  $-0.05\mu\text{m} < H < +0.05\mu\text{m}$
- c.  $\phi 1.25\text{mm}$  Ferrule End-face Radius :  $7 < R < 25\text{mm}$
- d. Apex Offset : < 50 $\mu\text{m}$
- e. Increase in insertion loss after 500 mating : 0.2 dB Max
- f. Operating Temperature :  $-20^{\circ}$  to  $+70^{\circ}$
- g. Storage Temperature :  $-40^{\circ}$  to  $+80^{\circ}$
- h. Bending radius: 0.5 ~1m:90mm, 2 ~3m: 80mm, 5~10m: 70mm

<b>Item No.:</b>	<b>21.15.8750</b>	<b>0.5m</b>
<b>Item No.:</b>	<b>21.15.8751</b>	<b>1.0m</b>
<b>Item No.:</b>	<b>21.15.8752</b>	<b>2.0m</b>
<b>Item No.:</b>	<b>21.15.8753</b>	<b>3.0m</b>
<b>Item No.:</b>	<b>21.15.8755</b>	<b>5.0m</b>
<b>Item No.:</b>	<b>21.15.8758</b>	<b>10.0m</b>

GENERAL TOLERANCE OF DIMENSIONS X.XXX $\pm 0.005$ X.XX $\pm 0.05$ X.X $\pm 0.1$	DRAWING	12.APR.2011	ZCY	<b>Rotronic CO., Ltd.</b>	
	CHECK	12.APR.2011	YTY		
	APPROVAL	12.APR.2011	FRANK		
		DATE	NAME		
	SCALE	1/1 (A4)	UNIT	mm	<b>ROLINE F. O. Cable, LC-LC, OM4</b>
	DRAWING CLASSIFICATION		S	SHEET	1 OF 1
					A1