

REMA Ringschraube mit Schlüssel C907X+KEY (Güteklasse 10)

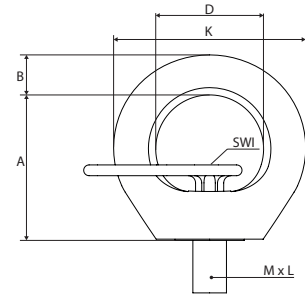
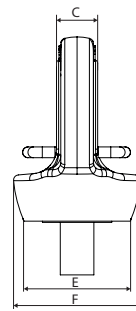


Merkmale

- 360° drehbar.
- Handfest anziehen.
- Unter Last nicht drehbar.
- Nach EN 1677-1

Norm:

- GS-OA 15-04 / EN1677



Typ	Tragfähigkeit (kg)	A (mm)	B (mm)	C (mm)	D (mm)	E (mm)	F (mm)	K (mm)	M x L (mm)	SWI (mm)	Gewicht (kg/st/m)	Artikel-Nr.
C807X+KEY-M8x12-0.3T	300	35	11	9	25	25	30	47	M8 x 12	6	0.300	2611408
C807X+KEY-M10x15-0.4T	400	35	11	9	25	25	30	47	M10 x 16	6	0.300	2611410
C807X+KEY-M12x23-0.75T	750	43	12.5	11.5	30	30	36.5	55.5	M12 x 18	7	0.460	2611412
C807X+KEY-M16x24-1.5T	1.500	49.5	14.5	15.7	35	35	41.8	64.5	M16 x 24	8	0.900	2611416
C807X+KEY-M20x30-2.3T	2.300	58	16	18	40	42	51.5	74.5	M20 x 30	10	1.150	2611420
C807X+KEY-M24x36-3.2T	3.200	69	20.5	22	49	50	58	90	M24 x 36	12	2.050	2611424
C807X+KEY-M30x45-4.5T	4.500	86	25.5	28	60	66	73	111	M30 x 43	17	3.120	2611430
C807X+KEY-M36x54-7.0T	7.000	107	32	32	74	75	96.5	135	M36 x 54	22	6.700	2611436
C807X+KEY-M42x63-9.0T	9.000	120	38	40.5	82	85	110	158	M42 x 64	24	9.500	2611442
C807X+KEY-M48x72-12T	12.000	139	43	44	95	100	124.5	179	M48 x 72	27	13.550	2611448

REMA Ringmutter C810FX (Güteklasse 10)

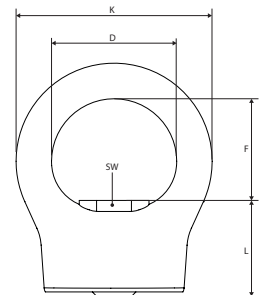
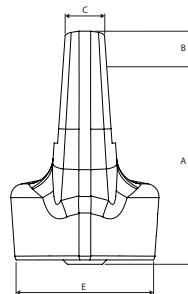


Merkmale

- 360° drehbar.
- In Lastrichtung handfest anziehen.
- Unter Last nicht drehbar.
- Mindestklasse 10.9.
- Nach EN 1677-1

Norm:

- GS-OA 15-04 / EN1677



Typ	Tragfähigkeit (kg)	A (mm)	B (mm)	C (mm)	D (mm)	E (mm)	F (mm)	K (mm)	M x L (mm)	SW (mm)	Gewicht (kg/st/m)	Artikel-Nr.
C810FX-M8-0.3T	300	44.5	8	10	29	32	23	45	M8 x 21.5	13	0.17	2611508
C810FX-M10-0.4T	400	44.5	8	10	29	32	23	45	M10 x 21.5	14	0.20	2611510
C810FX-M12-0.75T	750	53.5	11	11	34	44	27	56	M12 x 26.5	16	0.39	2611512
C810FX-M16-1.5T	1.500	59.5	13	14.5	39	56	29	65	M16 x 30.5	21	0.69	2611516
C810FX-M20-2.3T	2.300	67	14	17	42	58	34	70	M20 x 33.0	26	0.71	2611520
C810FX-M24-3.2T	3.200	80	18	19	52	73	40	88	M24 x 40.0	30	1.70	2611524
C810FX-M30-4.5T	4.500	101	22	27	62	80	50	106	M30 x 51.0	36	2.44	2611530