



CorePro LED PLL



CorePro LED PLL EM/Mains 16.5W 830 4P

Philips CorePro LED PLL is the ideal uplamping solution for downlights & luminaires in a wide range of general lighting applications. It integrates a LED light source into a traditional fluorescent form factor to offer superb energy savings over a lifetime that's twice as long as fluorescent alternatives.

Product data

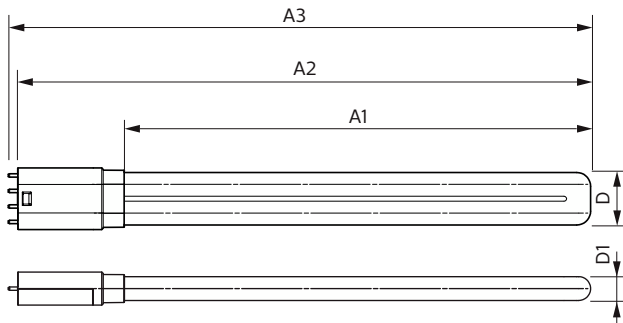
General Information		Starting Time (Nom)		0.5 s
Cap-Base	2G11 [2G11]	Warm-up time to 60% light	0.5 s	
Nominal lifetime	30,000 hour(s)	Power Factor (Fraction)	0.9	
Switching Cycle	200,000	Voltage (Nom)	220-240 V	
Lighting Technology	LED	Temperature		
Flux measurement reference	Sphere	Ambient temperature range	-20 °C to 45 °C	
Light Technical		T-Case Maximum (Nom)	70 °C	
Color Code	830 [CCT of 3000K]	Controls and Dimming		
Beam Angle (Nom)	160 degree(s)	Dimmable	No	
Luminous Flux	2,000 lumen	Mechanical and Housing		
Color Designation	White (WH)	Bulb Finish	Frosted	
Correlated Color Temperature (Nom)	3000 K	Bulb Material	Glass	
Luminous Efficacy (rated) (Nom)	121 lm/W	Product Length	400 mm	
Color Consistency	<6	Bulb Shape	Tube, single-ended	
Color rendering index (CRI)	80	Approval and Application		
LLMF At End Of Nominal Lifetime (Nom)	70 %	Energy Efficiency Class	E	
Operating and Electrical		Energy Saving Product	Yes	
Line Frequency	50 to 60 Hz	Approval Marks	RoHS compliance TUV CE marking KEMA Keur certificate	
Input Frequency	50 to 60 Hz			
Power Consumption	16.5 W			
Lamp Current (Nom)	83 mA			

CorePro LED PLL

Energy Consumption kWh/1000 h	17 kWh
EPREL Registration Number	1370827
EU RoHS compliant	Yes
Product Data	
Full product code	872016915707100
Order product name	CorePro LED PLL EM/Mains 16.5W 830 4P
Order code	929003592602

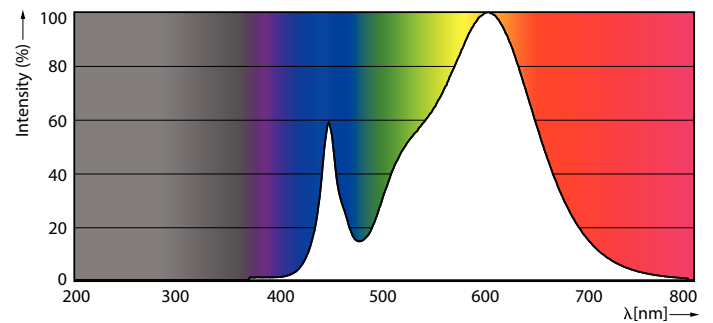
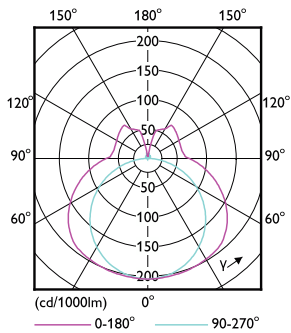
Numerator - Quantity Per Pack	1
Numerator - Packs per outer box	10
Material number (12NC)	929003592602
Full product name	CorePro LED PLL EM/Mains 16.5W 830 4P
EAN/UPC - Case	8720169157088

Dimensional drawing



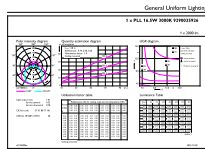
Product	D1	D2	A1	A2	A3
CorePro LED PLL EM/Mains 16.5W 830 4P	17 mm		330 mm	405 mm	412 mm

Photometric data



Light Distribution Diagram

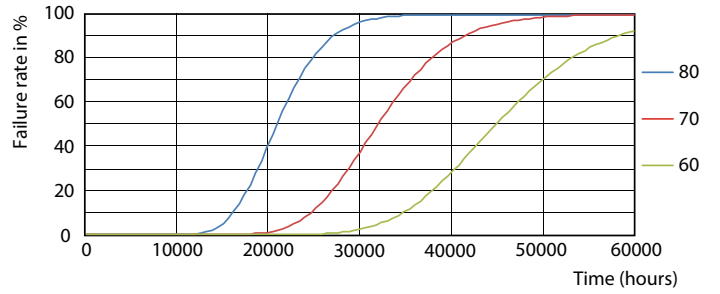
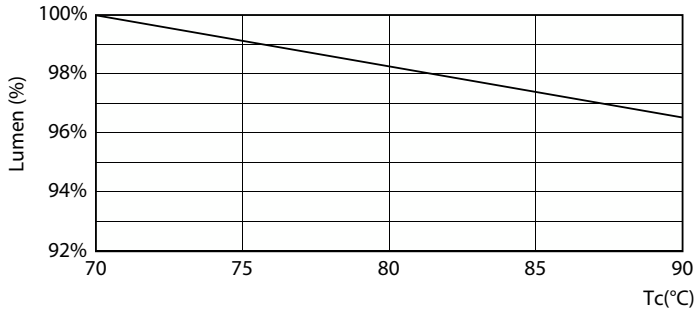
Spectral Power Distribution Colour



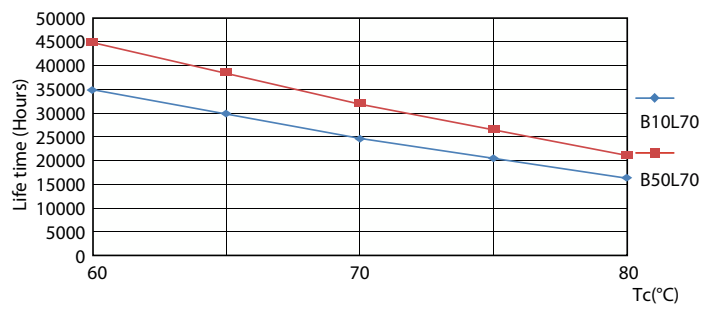
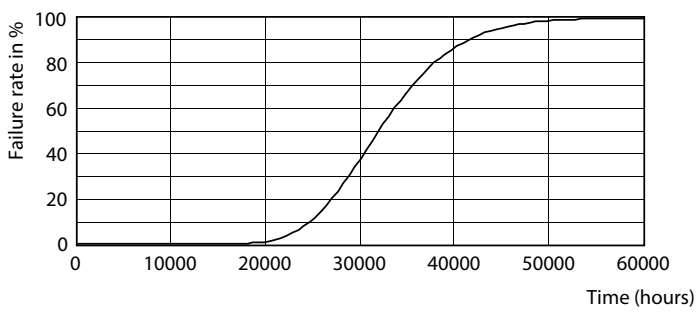
General uniform lighting - CorePro LED PLL EM/Mains 16.5W 830 4P

CorePro LED PLL

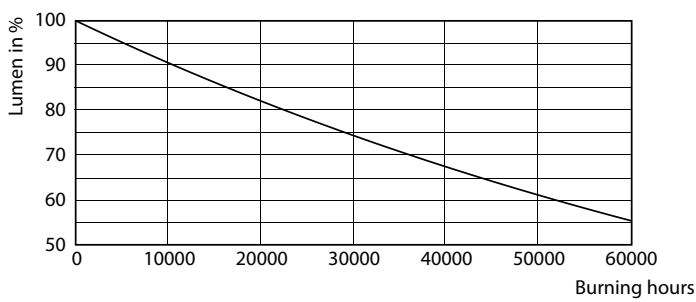
Lifetime



Lumen Maintenance Diagram **Life Expectancy Diagram**



Life Expectancy Diagram - CorePro LED PLL EM/Mains 16.5W 830 4P **Life Expectancy Diagram**



Lumen Maintenance Diagram - CorePro LED PLL EM/Mains 16.5W 830 4P

CorePro LED PLL

