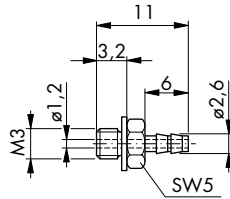


Schlauchtüllen

Tube Nipple

Schlauchtülle für Schlauch 4 x 1
(für Schlauch Best.-Nr. 50.203)
Werkstoff: Ms

Bestell-Nr.	50.706
-------------	--------

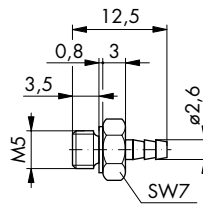


Tube nipple for 4 x 1 tubing
(for hose Order No. 50.203)
Material: brass

Order No.	50.706
-----------	--------

Schlauchtülle für Schlauch 4 x 1
(für Schlauch Best.-Nr. 50.203)
Werkstoff: Ms

Bestell-Nr.	50.036
-------------	--------

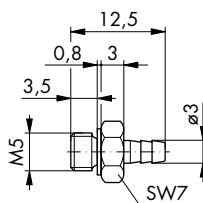


Tube nipple for 4 x 1 tubing
(for hose Order No. 50.203)
Material: brass

Order No.	50.036
-----------	--------

Schlauchtülle für Schlauch 4 x 1 (PVC)
Werkstoff: Ms

Bestell-Nr.	50.040
-------------	--------

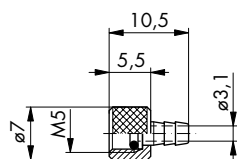


Tube nipple for 4 x 1 tubing (PVC)
Material: brass

Order No.	50.040
-----------	--------

Schlauchtülle für Schlauch 4 x 1 (PVC)
Werkstoff: Ms

Bestell-Nr.	50.045
-------------	--------

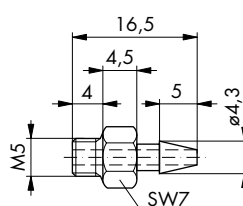


Tube coupling for 4 x 1 tubing (PVC)
Material: brass

Order No.	50.045
-----------	--------

Schlauchtülle für Schlauch 5 x 1
(selbstdichtend am Gewinde)

Bestell-Nr.	50.704
-------------	--------



Tube nipple for 5 x 1 tubing
(self-sealing on thread)

Order No.	50.704
-----------	--------

Technische Daten:

Betriebsdruck: max. 8 bar
Umgebungs-temperatur: - 10 °C...+ 70 °C*
Werkstoff: hochwertiges Polyamid
Zulässiger Anzugsmoment: max. 0,5 Nm

Technical Data:

Pressure range: max. 8 bar
Ambient temperature range: - 10 °C...+ 70 °C*
Material: high-grade Polyamide
Adm. tightening torque: max. 0.5 Nm

(Lieferung komplett mit Dichtung)

(Supplied complete with seals)

* Siehe Technische Informationen

* See Technical Information