

SURGE SUPPRESSOR, RC COUPLING, 690V  
50/60HZ 7.5KW, FOR MOTOR CONTACTORS SZ S00,








General technical data:

product brand name		SIRIUS
Product designation		surge suppressor
Design of the surge suppressor		with varistor


Control circuit/ Control:

Type of voltage of the control supply voltage		AC
Control supply voltage frequency		
• 1 Rated value	Hz	50
• 2 Rated value	Hz	60
Control supply voltage 1		
• with AC		
— at 50 Hz Rated value	V	690
— at 60 Hz Rated value	V	690

Certificates/ approvals:

General Product Approval		Declaration of Conformity	Test Certificates	Shipping Approval	
 CSA	 UL	 EG-Konf.	<a href="#">Special Test Certificate</a>	 ABS	 BUREAU VERITAS

Shipping Approval					
 DNV	 GL	 LRS	 PRS	 RINA	 RMRS

other	
<a href="#">Environmental Confirmations</a>	 VDE

### Further information

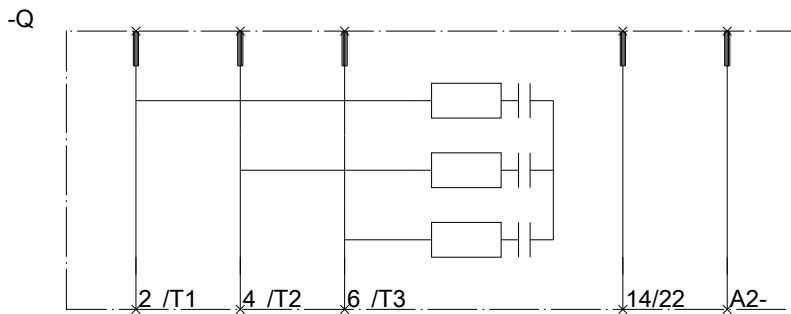
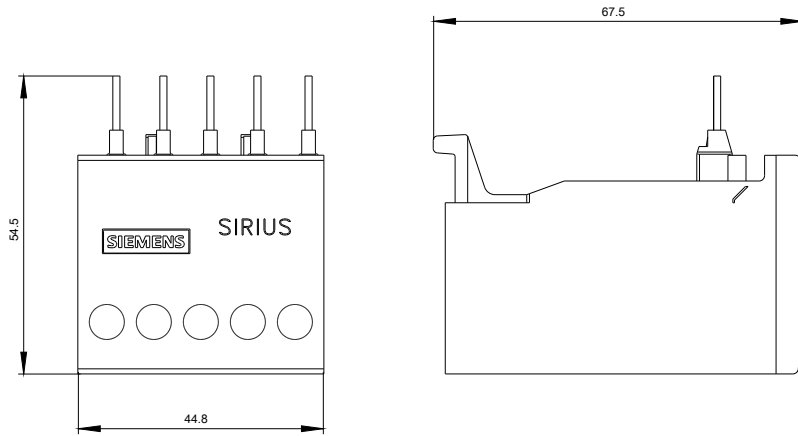
**Information- and Downloadcenter (Catalogs, Brochures,...)**  
<http://www.siemens.com/industrial-controls/catalogs>

**Industry Mall (Online ordering system)**  
<http://www.siemens.com/industrymall>

**Cax online generator**  
<http://support.automation.siemens.com/WW/CAXorder/default.aspx?lang=en&mlfb=3RT29161PA3>

**Service&Support (Manuals, Certificates, Characteristics, FAQs,...)**  
<http://support.automation.siemens.com/WW/view/en/3RT29161PA3/all>

**Image database (product images, 2D dimension drawings, 3D models, device circuit diagrams, EPLAN macros, ...)**  
<http://www.automation.siemens.com/bilddb/index.aspx?attID9=3RT29161PA3&lang=en>



last modified:

09.03.2015