



SIRIUS POSITION SWITCH METAL ENCLOSURE  
 56MM WIDE DEVICE CONNECTION 3X (M20X1.5)  
 1NO/ 2NC SLOW-ACTION CONTACTS METAL  
 ROLLER LEVER AND PLASTIC ROLLER 22MM

|   |  |  |
|---|--|--|
| Product designation   |  | standard position switch   |
| <b>Manufacturer article number</b>  |  |  |
| <ul style="list-style-type: none"> <li>• of the supplied basic switch</li> <li>• of the supplied actuator head for position switches</li> <li>• of the supplied switching contacts</li> <li>• of the supplied empty enclosure with cover</li> </ul> |  | <a href="#">3SE5122-0KA00</a><br><a href="#">3SE5000-0AE01</a><br><a href="#">3SE5000-0KA00</a><br><a href="#">3SE5122-0AA00</a> |

**General technical data:**

|  |    |              |
|--|----|--------------|
| <b>Product function</b>  |    |              |
| <ul style="list-style-type: none"> <li>• positive opening</li> </ul>   |    | Yes          |
| <b>Insulation voltage</b>  |    |              |
| <ul style="list-style-type: none"> <li>• Rated value</li> </ul>  | V  | 400          |
| <b>Degree of pollution</b>   |    | class 3      |
| <b>Shock resistance</b>  |    | 30g / 11 ms  |
| <b>Vibration resistance</b>  |    | 0.35 mm / 5g |
| <b>Surge voltage resistance Rated value</b>  | kV | 6            |
| <b>Mechanical service life (switching cycles)</b>  |    |              |
| <ul style="list-style-type: none"> <li>• typical</li> </ul>  |    | 15 000 000   |
| <b>Electrical endurance (switching cycles)</b>   |    |              |
| <ul style="list-style-type: none"> <li>• at AC-15 at 230 V typical</li> </ul>  |    | 100 000      |
| <b>Electrical endurance (switching cycles) with contactor 3RH11, 3RT1016, 3RT1017, 3RT1024, 3RT1025, 3RT1026 typical</b> |    | 10 000 000   |
| <b>Electrical operating cycles in one hour with contactor 3RH11, 3RT1016, 3RT1017, 3RT1024, 3RT1025, 3RT1026</b>         |    | 6 000        |

|   |    |            |
|---|----|------------|
| <b>Thermal current</b>                              | A  | 6          |
| <b>Material of the enclosure of the switch head</b> |    | metal      |
| <b>Protection class IP</b>                          |    | IP66/IP67  |
| <b>Equipment marking</b>                            |    |            |
| • acc. to DIN EN 61346-2                            |    | B          |
| • acc. to DIN EN 81346-2                            |    | B          |
| <b>Active principle</b>                             |    | mechanical |
| <b>Repeat accuracy</b>                              | mm | 0.05       |
| Explosion protection category for dust              |    | none       |
| Explosion protection category for gas               |    | none       |
| Minimum actuating force in activation direction     | N  | 10         |
| <b>Operating current at AC-15</b>                   |    |            |
| • at 230 V Rated value                              | A  | 1.5        |
| <b>Operating current</b>                            |    |            |
| • at DC-13 at 125 V Rated value                     | A  | 0.55       |
| <b>Operating current</b>                            |    |            |
| • at DC-13  |    |            |
| — at 24 V Rated value                               | A  | 3          |

#### Enclosure:

|   |  |                            |
|---|--|----------------------------|
| <b>Design of the housing</b>                  |  | block, wide                |
| <b>Material of the enclosure</b>              |  | metal                      |
| <b>Coating of the enclosure</b>               |  | cathodic immersion coating |
| <b>Design of the housing acc. to standard</b> |  | No                         |

#### Drive Head:

|  |  |                             |
|--|--|-----------------------------|
| <b>Design of the operating mechanism</b> |  | metal lever, plastic roller |
| <b>Standard-compliant actuator head</b>  |  | EN 50041                    |
| <b>Shape of the switch head</b>          |  | roller                      |
| <b>Design of the switching function</b>  |  | positive opening            |

#### Connections/ Terminals:

|  |  |   |
|--|--|---|
| <b>Type of electrical connection</b>               |  | screw-type terminals  |
| <b>Type of connectable conductor cross-section</b> |  |   |
| • solid  |  | 1x (0.5 ... 1.5 mm <sup>2</sup> ), 2x (0.5 ... 0.75 mm <sup>2</sup> ) |
| • finely stranded with core end processing         |  | 1x (0.5 ... 1.5 mm <sup>2</sup> ), 2x (0.5 ... 0.75 mm <sup>2</sup> ) |
| • finely stranded without core end processing      |  | 1x (0.5 ... 1.5 mm <sup>2</sup> ), 2x (0.5 ... 0.75 mm <sup>2</sup> ) |
| • for AWG conductors                               |  |   |
| — solid  |  | 1x (20 ... 16), 2x (20 ... 18)  |
| — stranded   |  | 1x (20 ... 16), 2x (20 ... 18)  |

#### Mechanical data:

|                         |  |                 |
|-------------------------|--|-----------------|
| <b>Cable entry type</b> |  | 3 x (M20 x 1.5) |
|-------------------------|--|-----------------|

#### Communication/ Protocol:

|                                |  |         |
|--------------------------------|--|---------|
| <b>Design of the interface</b> |  | without |
|--------------------------------|--|---------|

#### Ambient conditions:

##### Ambient temperature

- during operation
- during storage

|    |             |
|----|-------------|
| °C | -25 ... +85 |
| °C | -40 ... +90 |

#### Installation/ mounting/ dimensions:





##### mounting position

any

##### Mounting type

screw fixing

#### Certificates/ approvals:

| General Product Approval   | Declaration of Conformity   | Test Certificates   | other   |  |                              |
|--|---|---|---|--|------------------------------|
| <br>CSA | <br>UL |  | <br>EG-Konf. | <a href="#">Special Test Certificate</a> | <a href="#">Confirmation</a> |

#### Further information

##### Information- and Downloadcenter (Catalogs, Brochures,...)

<http://www.siemens.com/industrial-controls/catalogs>

##### Industry Mall (Online ordering system)

<http://www.siemens.com/industrymall>

##### Cax online generator

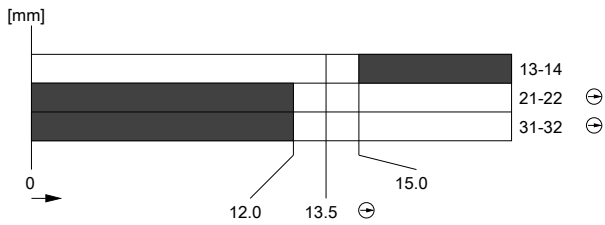
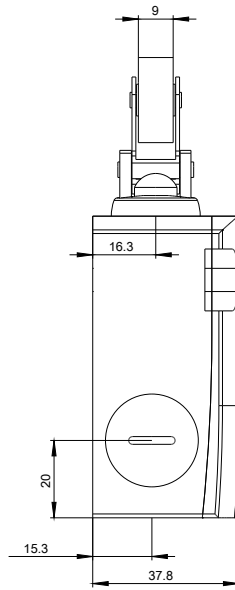
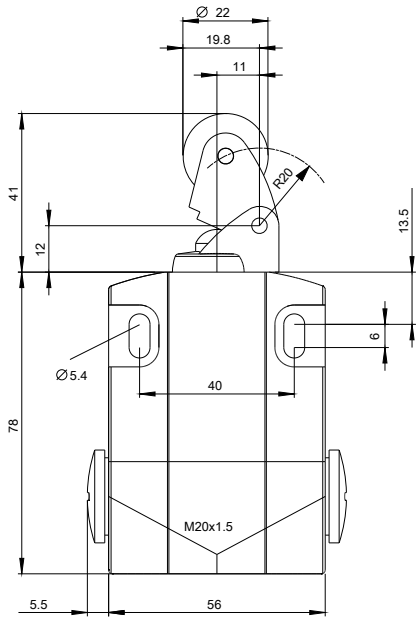
<http://support.automation.siemens.com/WW/CAXorder/default.aspx?lang=en&mlfb=3SE51220KE01>

##### Service&Support (Manuals, Certificates, Characteristics, FAQs,...)

<http://support.automation.siemens.com/WW/view/en/3SE51220KE01/all>

##### Image database (product images, 2D dimension drawings, 3D models, device circuit diagrams, EPLAN macros, ...)

[http://www.automation.siemens.com/bilddb/cax\\_de.aspx?mlfb=3SE51220KE01&lang=en](http://www.automation.siemens.com/bilddb/cax_de.aspx?mlfb=3SE51220KE01&lang=en)



last modified:

09.03.2015