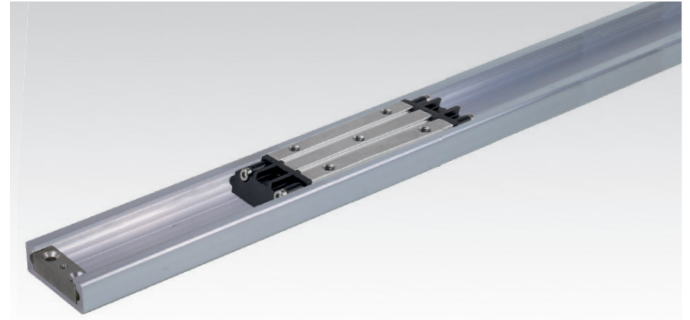


## Linear Motion Guide DA 0118 RC with Ball Carriage, Track Width 50 mm

**Material:** Track made from aluminium.  
**Carriage:** Aluminium housing with plastic sealings.  
 On choice: With stainless steel balls (greased) or polymer balls (grease free).  
 Linear guide for universal use.

- Four track lengths on choice (for to cut by the customer).
- Tracks without boreholes, or with mounting holes.
- Several carriages can be used on one track.
- Resistant against corrosion and dirt.
- All parts have to be ordered separately.
- Long service life, tested to 100,000 meters of travel distance.
- Temperature range: -20°C to +70°C.

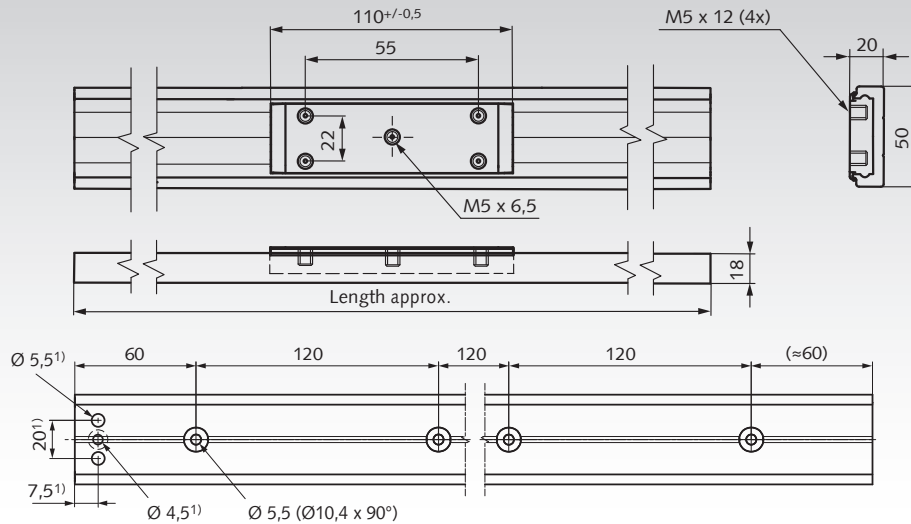
Ordering details: e.g.: 1x Prod. No. 649 805 01, Carriage with stainless steel balls,  
 1x Prod. No. 649 805 06, Track 600mm,  
 1x Prod. No. 649 805 03, Pair of End Stops



Accuride

Mounting holes only at  
 Product No. 649 805 06H,  
 Product No. 649 805 12H,  
 Product No. 649 805 18H,  
 Product No. 649 805 24H

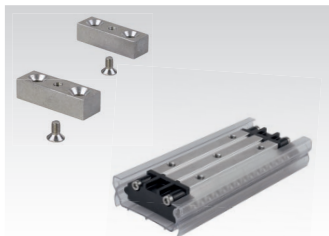
1) Bores for endstop at length  
 2400mm on both ends.  
 At other lengths only on  
 one side.



Product No.	Product	Load ratings in kg depending on mounting position and number of carriages						Weight g
		vertically mounted			horizontally mounted, lying			
		1 Carriage	2 Carri.	3 Carri.	1 Carriage	2 Carri.	3 Carri.	
649 805 01	Carriage with stainless steel balls	150	300	375	90	180	206	190
649 805 02	Carriage with polymer balls	90	180	225	54	108	124	150
649 805 06	Track, length 600mm							485
649 805 06H	Track, length 600mm with holes							480
649 805 12	Track, length 1200mm							965
649 805 12H	Track, length 1200mm with holes							960
649 805 18	Track, length 1800mm							1450
649 805 18H	Track, length 1800mm with holes							1440
649 805 24	Track, length 2400mm							1930
649 805 24H	Track, length 2400mm with holes							1920
649 805 03*	Pair of End Stops*							20

\* One pair, with two screws. Each end stop has a central, threaded hole for one screw, to be mounted from the bottom of the rail.  
 In each end stop are two additional through holes, for optional mounting through the rail and the customer's ground plate.

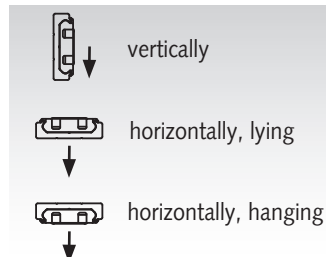
\*\* For rail lengths from 1200mm and carriage spacing min. 400mm.



Carriage (with mounting aid) and End Stops have to be ordered separately.



Tracks on choice without bores or with mounting holes.



The load ratings depend on the mounting position (see table).

### Note

Not recommended for high torque applicatins.  
 Fix track on a rigid and levelm surface. Fixing recommendation:  
 M5 countersunk screw or 5mm countersunk wood screw.

Push the carriages with the mounting aid carefully onto the track.  
 Distribute weight evenly across carriages. Infinte track lengths possible. The ends must be reworked fine. Butt tracks end to end and align the centre lines. Reworking on request.