

Hollow Worms and Worm Shafts Single-Thread, Right Hand

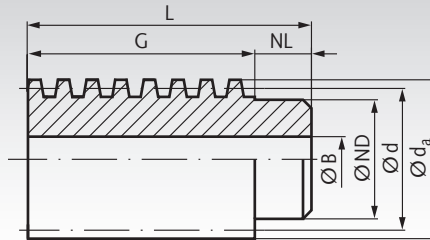
Single-thread worms to be paired with single-thread worm gears page 332. If the module (and number of threads) are matching,

various ratios at various axle distances can be realized. (see table page 332).

Hollow Worms, Milled, Made from Steel, Single-Thread, Right Hand

Material: 11SMn30+C (1.0715).

Pressure angle 20°.



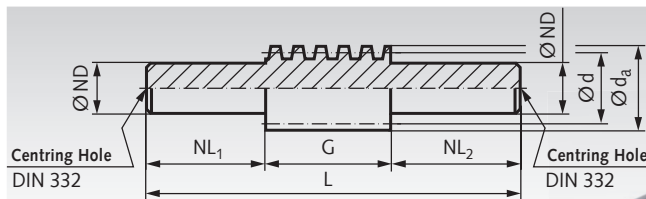
Ordering Details: e.g.: Product No. 30000000, Worm, Steel, Module 0.5, Single Thread, Right Hand

	Product No.	d mm	d _a mm	ND mm	NL mm	G mm	L mm	BH7 mm	Weight g
Module 0.5	300 000 00	7	8	5,5	4	12	16	3	4
Module 0.75	300 300 00	8,5	10	6	4	16	20	4	6
Module 1.0	300 600 00	14	16	11	6	24	30	6	26
Module 1.5	301 000 00	25	28	21	10	40	50	8	160
Module 2.0	301 300 00	32	36	25	10	45	55	8	300

Worm Shafts Milled, with Centring Hole, Made from Steel, Single-Thread, Right Hand

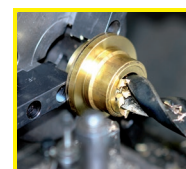
Material: 11SMn30+C (1.0715).

Pressure angle 20°.



Ordering Details: e.g.: Product No. 30000100, Worm Shaft, Steel, Module 0.5, Single Thread, Right Hand

	Product No.	d mm	d _a mm	ND ^{+0,2 +0,4} mm	NL ₁ mm	G mm	NL ₂ mm	L mm	Weight g
Module 0.5	300 001 00	7	8	5,5	18	12	10	40	9
Module 0.75	300 301 00	8,5	10	6	20	16	15	51	15
Module 1.0	300 601 00	14	16	10	30	24	20	74	60
Module 1.5	301 001 00	25	28	20	40	40	30	110	300
Module 2.0	301 301 00	32	36	25	50	45	36	131	620



**Reworking within
24h-service possible.
Custom made parts
on request.**