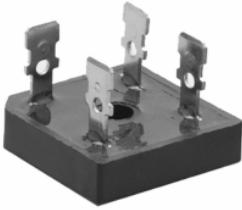


Bridge Rectifier GBPC Series

multicomp PRO



Features

- Plastic material
- Integrally moulded heatsink provide very low thermal resistance for maximum heat dissipation
- Surge overload ratings from 300 to 400 amperes
- Terminals solderable per MIL-STD-202, method 208 (for wire type)
- Typical IR less than 0.2 μ A
- High temperature soldering guaranteed: 260°C/10 seconds 0.375 inches (9.5mm) lead lengths (for wire type)
- Isolated voltage from case to lead over 2500 volts

Maximum Ratings and Electrical Characteristics

Ratings at 25°C ambient temperature unless otherwise specified.

Single phase, half wave, 60Hz, resistive or inductive load.

For capacitive load, derate current by 20%.

Characteristics	Symbol	Value	Units
Max. Recurrent Peak Reverse Voltage	V_{RRM}	400	V
Max. RMS Bridge Input Voltage	V_{RMS}	280	
Max. DC Blocking Voltage	V_{DC}	400	
Max. Average Forward Rectified Output Current at $T_c = 50^\circ\text{C}$	I_o	50	A
Peak Forward Surge Current 8.3 ms single half sine-wave superimposed on rated load (JEDEC Method)	I_{FSM}	450	
Max. Forward Voltage Drop per element at 17.5A DC	V_F	1.1	V
DC Blocking Voltage per element @ $T_A = 25^\circ\text{C}$	I_R	10	μA
Maximum DC Reverse Current at Rated @ $T_A = 100^\circ\text{C}$		500	
Operating and Storage Temperature Range	T_J, T_{STG}	-55 to +150	$^\circ\text{C}$

FIG. 1 - MAXIMUM NON-REPETITIVE FORWARD SURGE CURRENT

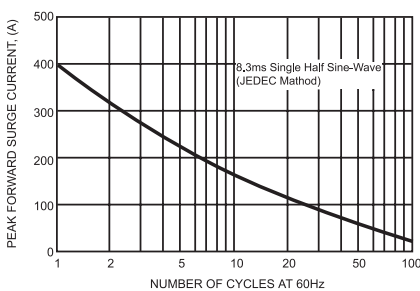


FIG. 2 - TYPICAL FORWARD CURRENT DERATING CURVE

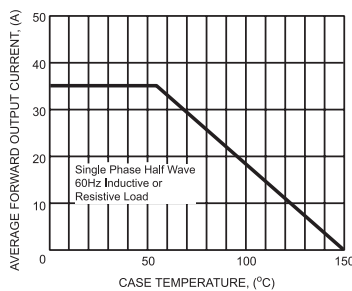
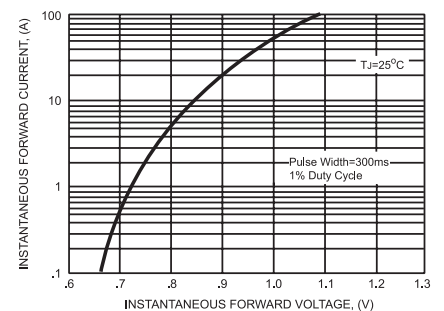


FIG. 3 - TYPICAL INSTANTANEOUS FORWARD CHARACTERISTICS

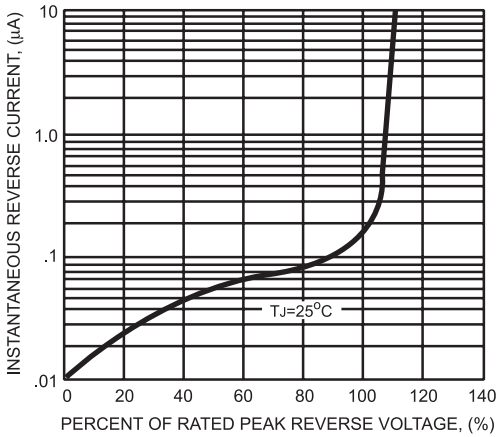


Newark.com/multicomp-pro
Farnell.com/multicomp-pro
Element14.com/multicomp-pro

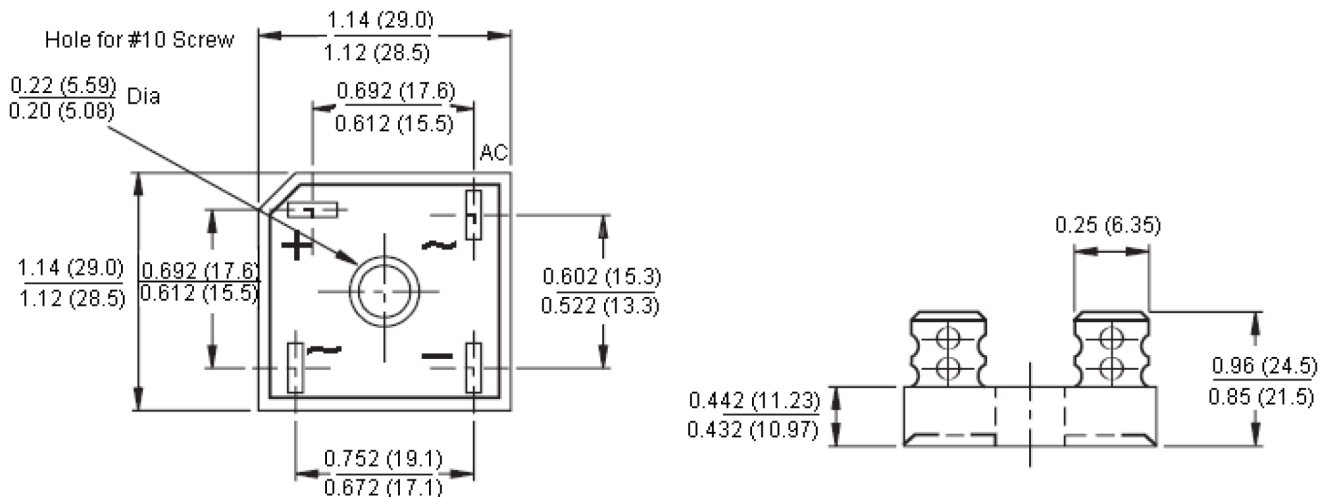
multicomp PRO

Bridge Rectifier GBPC Series

FIG. 4 - TYPICAL REVERSE CHARACTERISTICS



Diagram



Dimensions : Inches (Millimetres)

Part Number Table

Description	Part Number
Bridge Rectifier, 50A, 400V	GBPC5004

Important Notice : This data sheet and its contents (the "Information") belong to the members of the AVNET group of companies (the "Group") or are licensed to it. No licence is granted for the use of it other than for information purposes in connection with the products to which it relates. No licence of any intellectual property rights is granted. The Information is subject to change without notice and replaces all data sheets previously supplied. The Information supplied is believed to be accurate but the Group assumes no responsibility for its accuracy or completeness, any error in or omission from it or for any use made of it. Users of this data sheet should check for themselves the Information and the suitability of the products for their purpose and not make any assumptions based on information included or omitted. Liability for loss or damage resulting from any reliance on the Information or use of it (including liability resulting from negligence or where the Group was aware of the possibility of such loss or damage arising) is excluded. This will not operate to limit or restrict the Group's liability for death or personal injury resulting from its negligence. Multicomp Pro is the registered trademark of Premier Farnell Limited 2019.