

JUMO GmbH & Co. KG

Delivery address: Mackenrodtstraße 14,
36039 Fulda, Germany
Postal address: 36035 Fulda, Germany
Phone: +49 661 6003-0
Fax: +49 661 6003-607
E-mail: mail@jumo.net
Internet: www.jumo.net

JUMO Instrument Co. Ltd.

JUMO House
Temple Bank, Riverway
Harlow - Essex CM20 2DY, UK
Phone: +44 1279 63 55 33
Fax: +44 1279 63 52 62
E-mail: sales@jumo.co.uk
Internet: www.jumo.co.uk

JUMO Process Control, Inc.

8 Technology Boulevard
Canastota, NY 13032, USA
Phone: 315-697-JUMO
1-800-554-JUMO
Fax: 315-697-5867
E-mail: info@jumo.us
Internet: www.jumo.us

**JUMO VIBROtemp**

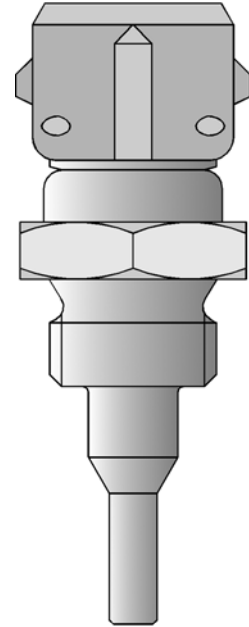
Screw-in RTD temperature probes with plug connector

- Temperature range from -50 to +270 °C
- Shakeproof design
- Application areas: utility vehicles, construction and agricultural machinery, motors, compressors and railway technology
- Plug connection locked contact stable, protection class IP67 (IP69K)

Screw-in RTD temperature probes in vibration proof design allow temperature measuring under pressure in utility vehicles, construction and agricultural machinery, motors, compressors and in railway technology.

The plug connectors between the protection fitting and the connection cable are locked contact stable and have the protection class IP67 (IP69K) when connected.

The measuring insert is normally fitted with a Pt 100 temperature probe as per DIN EN 60751, Class B in 2-wire circuit; versions with Pt 500 or Pt 1000 as well as PTC or NTC temperature probes can also be supplied.



Technical Data

Connection	Type 902040/10: AMP plug connector (Junior-Power-Timer) with gold-plated contacts, IP67 when connected Type 902040/12: Machine connector M 12, IP67 when connected Type 902040/15: Bayonet connector as per DIN 72585, IP69K when connected Type 902040/17: Bosch compact connector 1.1, IP67 when connected
Process connection	Thread, stainless steel or brass
Thermowell	Stainless steel or brass
Measuring insert	Pt 100 temperature probe, DIN EN 60751, Class B, 2-wire circuit
Protection type	IP67 (IP69K), when connected
Response times	Type 902040/10: $t_{0,5} = 1.2 \text{ s}$, $t_{0,9} = 6 \text{ s}$, in water with 0.2 m/s, $\varnothing 4 \text{ mm}$ Type 902040/12: $t_{0,5} = 1.2 \text{ s}$, $t_{0,9} = 6 \text{ s}$, in water with 0.2 m/s, $\varnothing 4 \text{ mm}$ Type 902040/15: $t_{0,5} = 1.2 \text{ s}$, $t_{0,9} = 6 \text{ s}$, in water with 0.2 m/s, $\varnothing 4 \text{ mm}$ Type 902040/17: $t_{0,5} = 1.2 \text{ s}$, $t_{0,9} = 6 \text{ s}$, in water with 0.2 m/s, $\varnothing 4 \text{ mm}$
Accessories	Coupling for type 902040/10 without or with a 2.5 m long connection cable, silicone-insulated, coupling for type 902040/12, 902040/15 and 902040/17, data sheet 90.9726

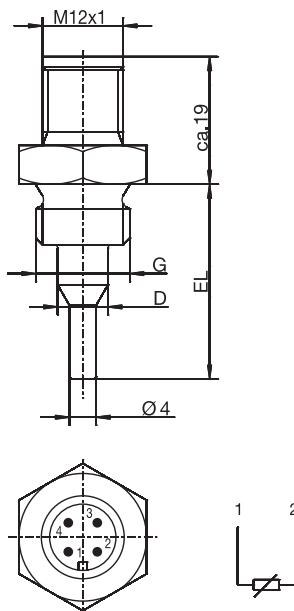
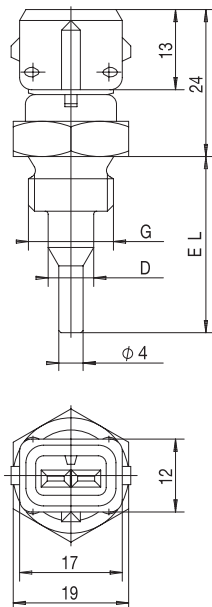
JUMO GmbH & Co. KG
 Delivery address: Mackenrodtstraße 14,
 36039 Fulda, Germany
 Postal address: 36035 Fulda, Germany
 Phone: +49 661 6003-0
 Fax: +49 661 6003-607
 E-mail: mail@jumo.net
 Internet: www.jumo.net

JUMO Instrument Co. Ltd.
 JUMO House
 Temple Bank, Riverway
 Harlow - Essex CM20 2DY, UK
 Phone: +44 1279 63 55 33
 Fax: +44 1279 63 52 62
 E-mail: sales@jumo.co.uk
 Internet: www.jumo.co.uk

JUMO Process Control, Inc.
 8 Technology Boulevard
 Canastota, NY 13032, USA
 Phone: 315-697-JUMO
 1-800-554-JUMO
 Fax: 315-697-5867
 E-mail: info@jumo.us
 Internet: www.jumo.us

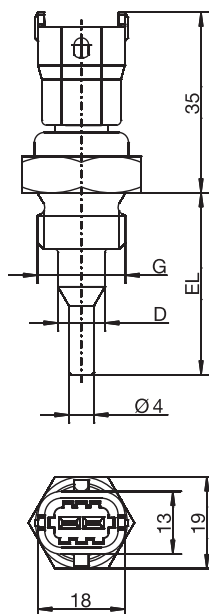
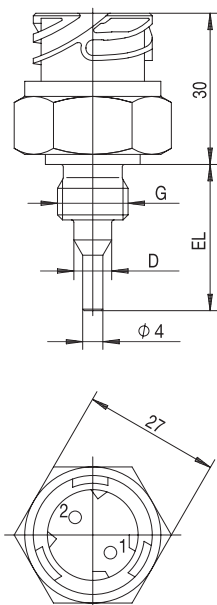


Dimensions



Type 902040/10

Type 902040/12



Type 902040/15

Type 902040/17

JUMO GmbH & Co. KG

Delivery address: Mackenrodtstraße 14,
36039 Fulda, Germany
Postal address: 36035 Fulda, Germany
Phone: +49 661 6003-0
Fax: +49 661 6003-607
E-mail: mail@jumo.net
Internet: www.jumo.net

JUMO Instrument Co. Ltd.

JUMO House
Temple Bank, Riverway
Harlow - Essex CM20 2DY, UK
Phone: +44 1279 63 55 33
Fax: +44 1279 63 52 62
E-mail: sales@jumo.co.uk
Internet: www.jumo.co.uk

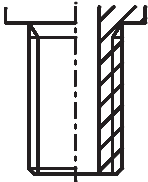
JUMO Process Control, Inc.

8 Technology Boulevard
Canastota, NY 13032, USA
Phone: 315-697-JUMO
1-800-554-JUMO
Fax: 315-697-5867
E-mail: info@jumo.us
Internet: www.jumo.us

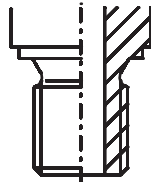


Thread undercuts

Thread run-out
DIN 76-short

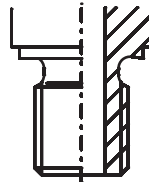


Thread undercut
DIN 3852-Form A



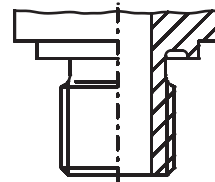
Sealing by means
of a sealing ring

Thread undercut
DIN 3852-Form B



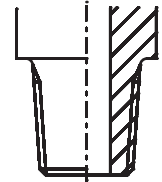
Sealing by means
of a sealing edge

Thread undercut
DIN 3852-Form E



Sealing by means
of a profile sealing ring
DIN 3869

Thread undercut
DIN 3852-Form C



Sealing by means
of a thread

JUMO GmbH & Co. KG
 Delivery address: Mackenrodtstraße 14,
 36039 Fulda, Germany
 Postal address: 36035 Fulda, Germany
 Phone: +49 661 6003-0
 Fax: +49 661 6003-607
 E-mail: mail@jumo.net
 Internet: www.jumo.net

JUMO Instrument Co. Ltd.
 JUMO House
 Temple Bank, Riverway
 Harlow - Essex CM20 2DY, UK
 Phone: +44 1279 63 55 33
 Fax: +44 1279 63 52 62
 E-mail: sales@jumo.co.uk
 Internet: www.jumo.co.uk

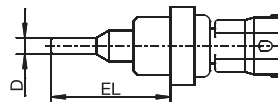
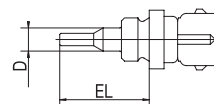
JUMO Process Control, Inc.
 8 Technology Boulevard
 Canastota, NY 13032, USA
 Phone: 315-697-JUMO
 1-800-554-JUMO
 Fax: 315-697-5867
 E-mail: info@jumo.us
 Internet: www.jumo.us



Order details: Screw-in RTD temperature probe with AMP plug connector or Bosch compact connector 1.1

(1) Basic type

902040/10	Screw-in RTD temperature probe with AMP plug connector (Junior-Power-Timer)
902040/17	Screw-in RTD temperature probe with Bosch compact connector 1.1, 2-pin



(2) Operating temperature in °C

x x	370	-50 to +150 °C
x x	387	-50 to +270 °C (short-term +300 °C)

(3) Measuring insert

x x	1003	1 x Pt100 in 2-wire circuit
x x	1004	1 x Pt500 in 2-wire circuit
x x	1005	1 x Pt1000 in 2-wire circuit
x x	9999	1 x PTC or NTC temperature probes in 2-wire circuit (specify in plain text)

(4) Tolerance class as per DIN EN 60751

x x	0	Technical data of PTC or NTC temperature probes
x x	1	Class B (standard)
x x	2	Class A

(5) Thermowell diameter D in mm

x x	6	Ø 6 mm with EL = 60 mm
x x	7.5	Ø 7.5 mm, stepped down to 4 mm for EL = 25 mm, 26 mm and 29 mm

(6) Fitting length EL in mm (adapt to the (7) process connection)

x x	25	25 mm
x x	26	26 mm
x x	29	29 mm
x x	60	60 mm

(7) Process connection

x x	102	Screw connection G 1/4 (EL = 29 mm, thread undercut, form B, material: brass)
x x	103	Screw connection G 3/8 (EL = 29 mm, thread undercut, form A, material: stainless steel)
x x	114	Screw connection M 10x1 (EL = 29 mm, thread undercut, DIN 76-short, material: brass)
x x	118	Screw connection M 12x1.5 (EL = 26 mm, thread undercut, form B, material: brass)
x x	121	Screw connection M 14x1.5 (EL = 29 mm, thread undercut, form A, material: stainless steel or brass)
x x	141	Screw connection NPTF 1/8"-27 (EL = 25 mm, thread undercut, form C, material: stainless steel or brass)

(8) Protection tube material

x x	20	Stainless steel
x x	46	Brass

Order code	(1)	(2)	(3)	(4)	(5)	(6)	(7)	(8)							
Order example	902040/10	-	387	-	1003	-	1	-	6	-	29	-	103	-	20

JUMO GmbH & Co. KG
 Delivery address: Mackenrodtstraße 14,
 36039 Fulda, Germany
 Postal address: 36035 Fulda, Germany
 Phone: +49 661 6003-0
 Fax: +49 661 6003-607
 E-mail: mail@jumo.net
 Internet: www.jumo.net

JUMO Instrument Co. Ltd.
 JUMO House
 Temple Bank, Riverway
 Harlow - Essex CM20 2DY, UK
 Phone: +44 1279 63 55 33
 Fax: +44 1279 63 52 62
 E-mail: sales@jumo.co.uk
 Internet: www.jumo.co.uk

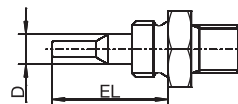
JUMO Process Control, Inc.
 8 Technology Boulevard
 Canastota, NY 13032, USA
 Phone: 315-697-JUMO
 1-800-554-JUMO
 Fax: 315-697-5867
 E-mail: info@jumo.us
 Internet: www.jumo.us



Order details: Screw-in RTD temperature probe with machine connector M 12

(1) Basic type

902040/12 Screw-in RTD temperature probe
 with machine connector M 12



x	370	(2) Operating temperature in °C -50 to +150 °C
x	1003	(3) Measuring insert 1 x Pt100 in 2-wire circuit
x	1004	1 x Pt500 in 2-wire circuit
x	1005	1 x Pt1000 in 2-wire circuit
x	9999	1 x PTC or NTC temperature probes in 2-wire circuit (specify in plain text)
x	0	(4) Tolerance class as per DIN EN 60751 Technical data of PTC or NTC temperature probes
x	1	Class B (standard)
x	2	Class A
x	7.5	(5) Thermowell diameter D in mm Ø 7.5 mm, stepped down to 4 mm
x	36	(6) Fitting length EL in mm 36 mm
x	121	(7) Process connection Screw connection M 14x1.5
x	141	Screw connection NPTF 1/8"-27
x	542	Screw connection G 3/8 as per DIN 2999
x	20	(8) Protection tube material Stainless steel
x	46	Brass

Order code	(1)	(2)	(3)	(4)	(5)	(6)	(7)	(8)
Order example	902040/12	- 370	- 1003	- 1	- 7.5	- 36	- 141	- 20

JUMO GmbH & Co. KG
 Delivery address: Mackenrodtstraße 14,
 36039 Fulda, Germany
 Postal address: 36035 Fulda, Germany
 Phone: +49 661 6003-0
 Fax: +49 661 6003-607
 E-mail: mail@jumo.net
 Internet: www.jumo.net

JUMO Instrument Co. Ltd.
 JUMO House
 Temple Bank, Riverway
 Harlow - Essex CM20 2DY, UK
 Phone: +44 1279 63 55 33
 Fax: +44 1279 63 52 62
 E-mail: sales@jumo.co.uk
 Internet: www.jumo.co.uk

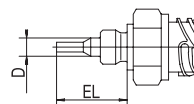
JUMO Process Control, Inc.
 8 Technology Boulevard
 Canastota, NY 13032, USA
 Phone: 315-697-JUMO
 1-800-554-JUMO
 Fax: 315-697-5867
 E-mail: info@jumo.us
 Internet: www.jumo.us



Order details: Screw-in RTD temperature probe with bayonet connector as per DIN 72585

(1) Basic type

902040/15 Screw-in RTD temperature probe
 with bayonet connector as per DIN 72585



	(2) Operating temperature in °C
x	382 -50 to +220 °C
	(3) Measuring insert
x	1003 1 x Pt100 in 2-wire circuit
x	1004 1 x Pt500 in 2-wire circuit
x	1005 1 x Pt1000 in 2-wire circuit
x	9999 1 x PTC or NTC temperature probes in 2-wire circuit (specify in plain text)
	(4) Tolerance class as per DIN EN 60751
x	0 Technical data of PTC or NTC temperature probes
x	1 Class B (standard)
x	2 Class A
	(5) Thermowell diameter D in mm
x	7.5 Ø 7.5 mm, stepped down to 4 mm
	(6) Fitting length EL in mm
x	29 29 mm
	(7) Process connection
x	121 Screw connection M 14x1.5
	(8) Protection tube material
x	20 Stainless steel
x	46 Brass

Order code	(1)	-	(2)	-	(3)	-	(4)	-	(5)	-	(6)	-	(7)	-	(8)
Order example	902040/15	-	382	-	1003	-	1	-	7.5	-	29	-	121	-	20

Accessories

Coupling for type 902040/10 with a 2.5 m long connection cable, silicone-insulated
 Coupling for type 902040/15

Part No.
 90/00308880
 90/004439715

Stock versions

(1)	(2)	(3)	(4)	(5)	(6)	(7)	(8)	Part No.
902040/10	- 387	- 1003	- 1	- 7.5	- 29	- 121	- 20	90/00446901
902040/10	- 387	- 1003	- 1	- 7.5	- 29	- 121	- 46	90/00447301