

UG1410-A-R1



- Snap-action : tactile feedback with audible click
- High current/voltage rating
- Sealed to IP67
- Flat round actuator for optional marking

ENVIRONMENTAL SPECIFICATIONS

- Front panel sealing : IP67 according to IEC 60529
- Shock resistance : 50 g - 11 ms according to IEC 68-2-27
- Salt spray : IEC 512-6, test 11f
- Operating temperature : -40°C to +85°C
- Storage temperature : -40°C to +85°C

ELECTRICAL SPECIFICATIONS

- Max. current/voltage rating with resistive load : 3A 28VDC
- Initial contact resistance : 100 mΩ max.
- Insulation resistance : 1 GΩ min. at 500VDC
- Dielectric strength : 500 Vrms between terminals
- Electrical life at full load : 25.000 cycles

GENERAL SPECIFICATIONS

- Panel thickness : 1,5 mm (.059) to 10 mm (.394)
- Total travel : 1,7 mm (.067) +/- 0,3 mm
- Low level or mechanical life : 1.000.000 cycles
- Torque (applied to nut) : 1 Nm max. with metal nut U166
1,5 Nm max. with plastic nut U4248

MATERIALS

- Case : polyamide 4/6
- Actuator : polyamide 6/6
- Bushing/bezel : polyamide 6/6
- Contacts : silver, gold plated
- Terminal seal : epoxy

AGENCY APPROVAL



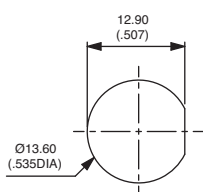
2A 125VAC/250VAC
File E83438

Availability : consult factory for details of approved models.

Marking : to order switches marked UL, complete appropriate box of ordering format.

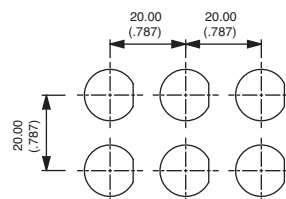
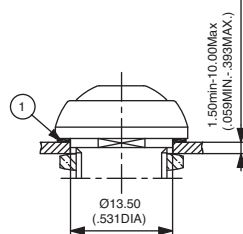
MOUNTING - STANDARD BEZEL

Panel cut-out

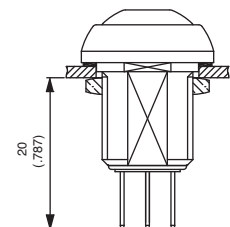


① Flat seal

Matrix mounting

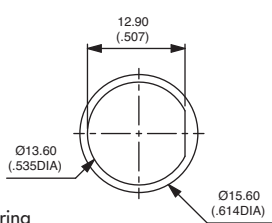


Back of panel space requirement



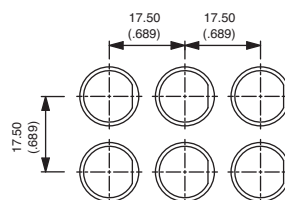
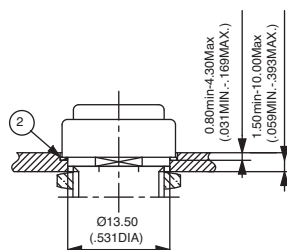
MOUNTING - REDUCED BEZEL

Panel cut-out

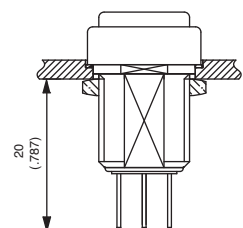


② O-ring

Matrix mounting



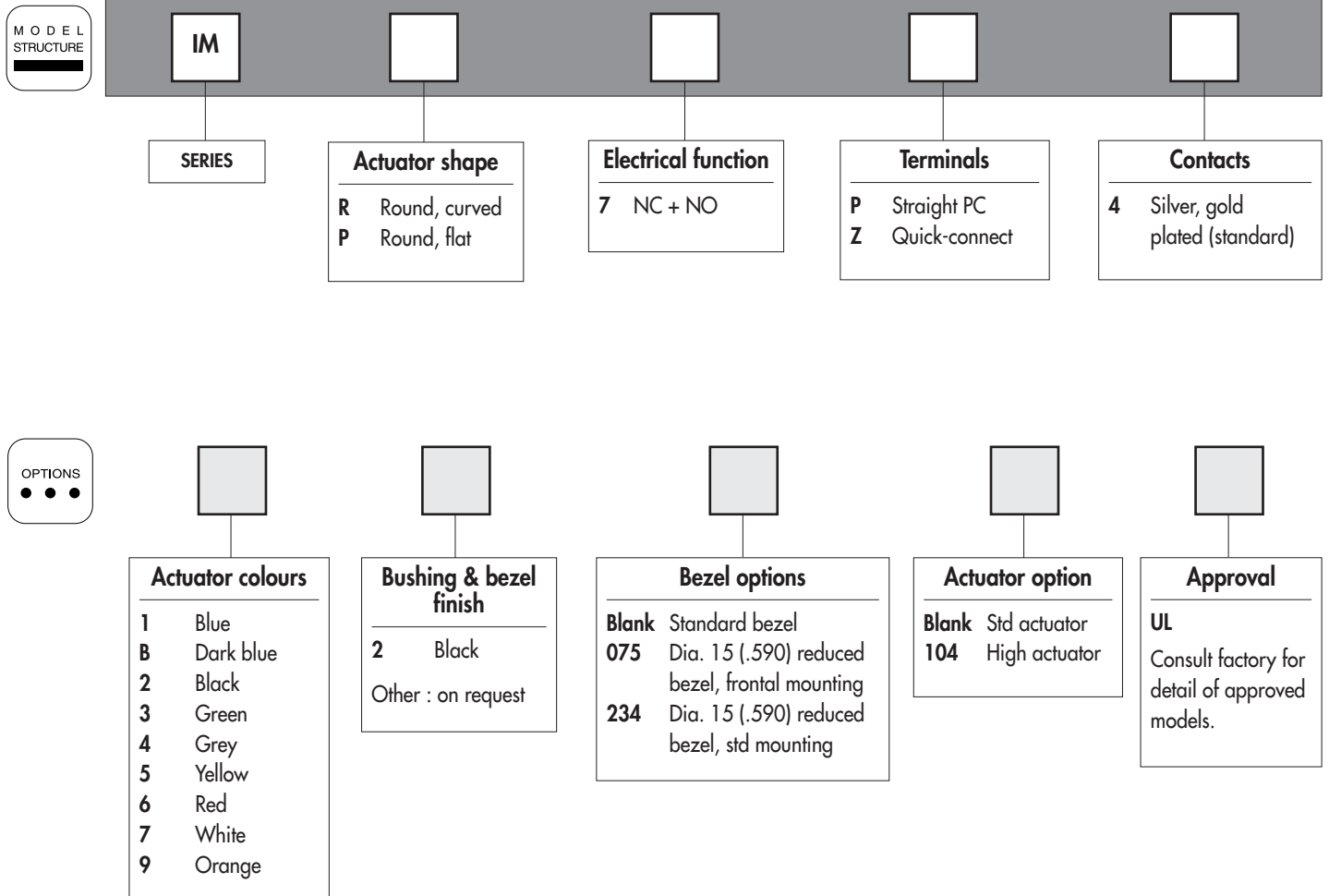
Back of panel space requirement



IM series

Sealed snap-action pushbutton switches - bushing Ø 12 mm - momentary

Overview



OPTIONS
● ● ●

Actuator colours

1 Blue
B Dark blue
2 Black
3 Green
4 Grey
5 Yellow
6 Red
7 White
9 Orange

Bushing & bezel finish

2 Black
Other : on request

Bezel options

Blank Standard bezel
075 Dia. 15 (.590) reduced bezel, frontal mounting
234 Dia. 15 (.590) reduced bezel, std mounting

Actuator option

Blank Std actuator
104 High actuator

Approval

UL
Consult factory for detail of approved models.

ABOUT THIS SERIES

On the following pages, you will find successively :
model structure of switches and options in the same order as in above chart

Dimensions : first dimensions are in mm while inches are shown as bracketed numbers.



NOTICE : please note that not all combinations of above numbers are available. Refer to the following pages for further information.



A sealing boot is available to protect the switches against frost and sand (P/N U5125). It is presented after the IA series and in section H.



Mounting accessories : Standard hardware supplied : 1 flat seal (standard bezel) or 1 O-ring (reduced bezel) and 1 metal hex nut 14 mm (.551) across flats. Hex nut part number U166. Plastic nut 17 mm (.669) across flats, thickness 4 mm (.157) available on request. Part number U4248.



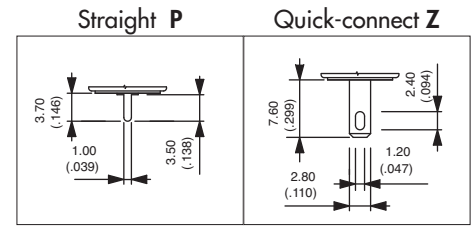
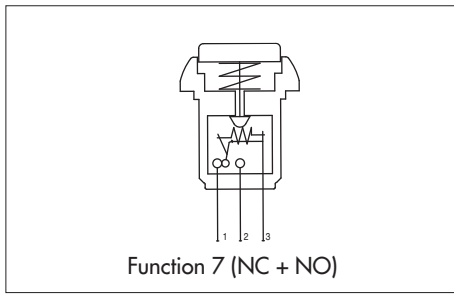
Packaging unit : 50 pieces

The company reserves the right to change specifications without notice.

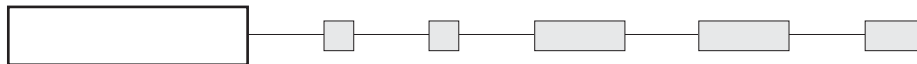
IM series

Sealed snap-action pushbutton switches - bushing Ø 12 mm - momentary

Round - non-illuminated



MODEL STRUCTURE



Common terminal identified by a horizontal dash

Standard bezel - straight PC terminals



Curved actuator
IMR7P4



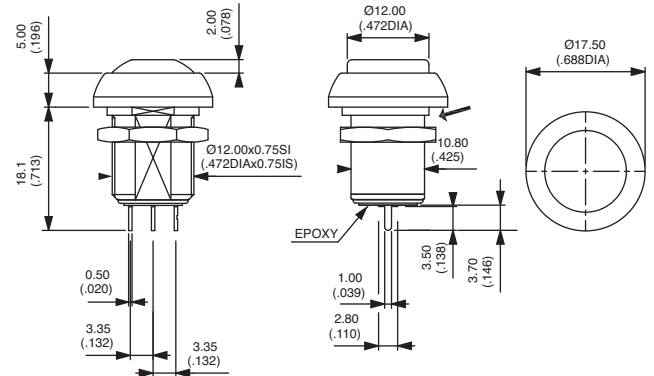
NC+NO

Flat actuator
IMP7P4



NC+NO

→ Flat



Standard bezel - quick-connect terminals



Curved actuator
IMR7Z4



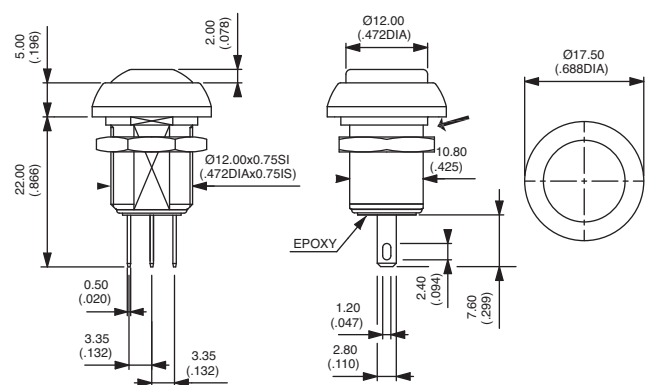
NC+NO

Flat actuator
IMP7Z4

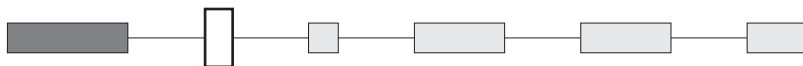


NC+NO

→ Flat

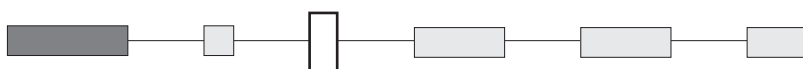


ACTUATOR COLOURS



1 : blue - B : dark blue - 2 : black - 3 : green - 4 : grey - 5 : yellow - 6 : red - 7 : white - 9 : orange

BUSHING AND BEZEL COLOURS



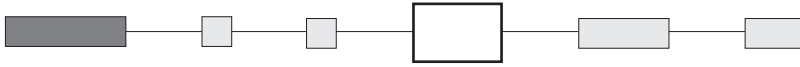
2 : black (standard)
Other : on request

IM series

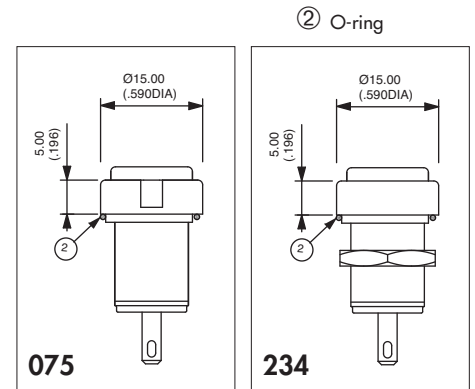
Sealed snap-action pushbutton switches - bushing Ø 12 mm - momentary

Options

BEZEL OPTIONS

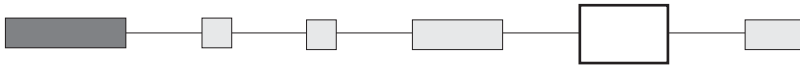


- Blank** Standard bezel
- 075** Dia. 15 (.590) reduced bezel, mounting of the switch from the front into a threaded panel cut-out
- 234** Dia. 15 (.590) reduced bezel, standard mounting

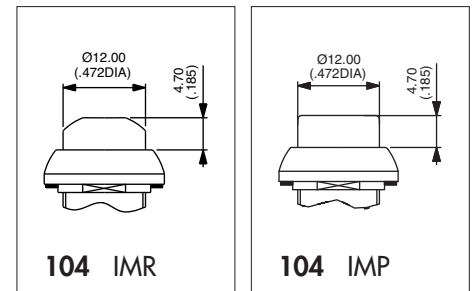


B1

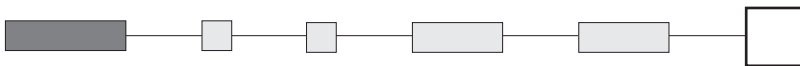
ACTUATOR OPTION



- Blank** Standard actuator
- 104** High actuator



AGENCY APPROVAL



UL

Availability : consult factory for details of approved models.
Marking : to order switches marked UL, complete above box with "UL".