

Component specification

Buzzer

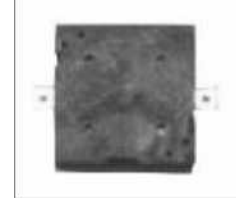
BPE1305S-02A

Index **A**

PBWOE

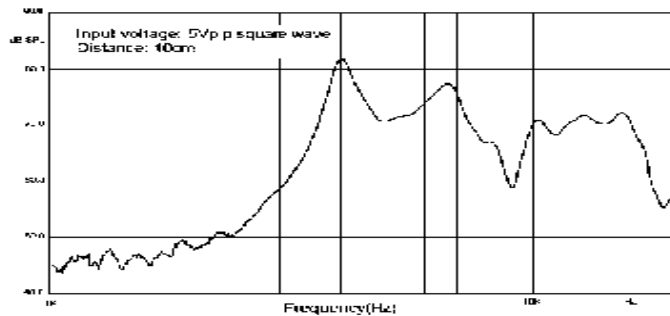
1. General

| | | | |
|------------------------|-------------------------------------|-----------------------|-------|
| Operating temperature: | -40°C to +105°C | Component weight [g]: | 0,5 |
| Storage temperature: | -40°C to +105°C | | |
| Contact: | SMD | Housing color: | black |
| Packageing: | tor | IP rating: | |
| ESD conform | <input checked="" type="checkbox"/> | RoHs conform: | yes |
| Remark: | reflowable | | |



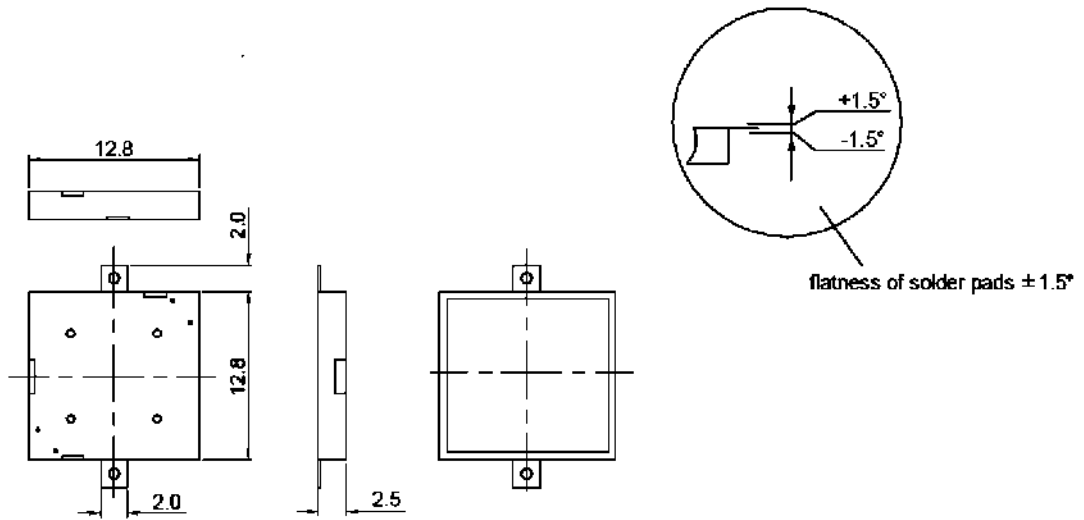
2. Electrical and acoustical specification

| | | |
|--------------------------|--|------------|
| Resonant frequency [Hz] | | 4100 ± 500 |
| Capacity [nF] at 120Hz | | 16 ± 30% |
| Rated voltage [V] | | 5 |
| Operating voltage [V] | | 1 - 25 |
| SPL [dBA]: | 4.1 kHz, 10 cm, square wave 50% duty cycle | ≥ 75 |
| Current consumption [mA] | 5 Vpp, 4.1 kHz, square wave 50% duty cycle | ≤ 5 |
| Tone constant-pulse: | | |
| Polarity: | | |
| Remark: | | |
| frequency curve: | | |

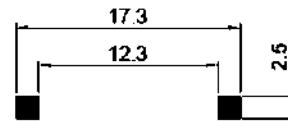


| | | | | |
|----------------------------------|------------|-------------------------------|-------------|------------|
| GREWUS | | dimensions without tolerance: | scale: | |
| Designed by: Ralf Hinnerichs | 11.03.2009 | part number: | index: | Date: |
| Released by: Ralf Hinnerichs | 11.03.2009 | BPE1305S-02A | A | 11.03.2009 |
| drawing number: 398838276 | | Buzzer | Page 1 of 3 | |

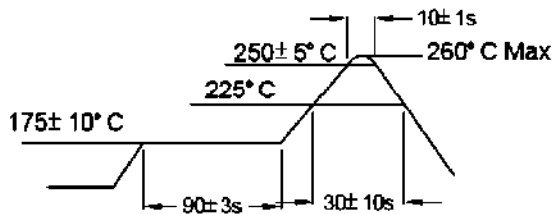
3. Component drawing



land pattern



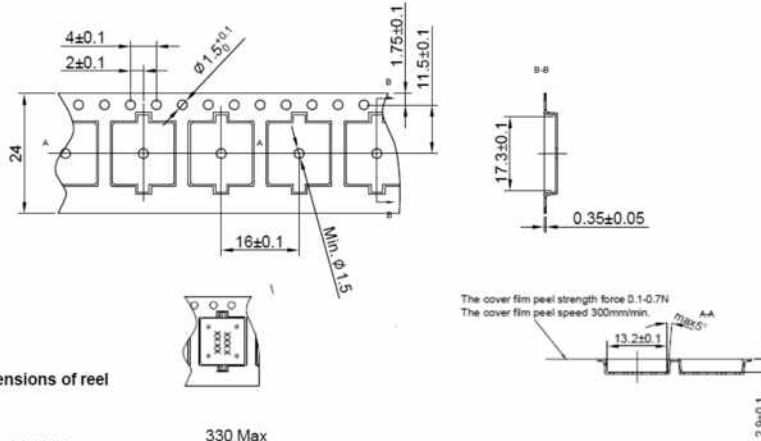
Recommended Temp. Profile for Reflow Oven



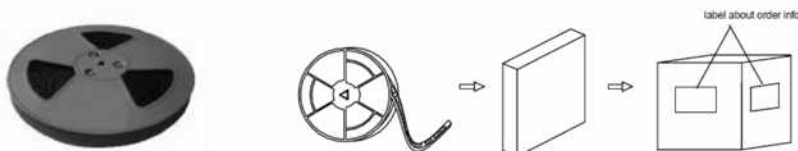
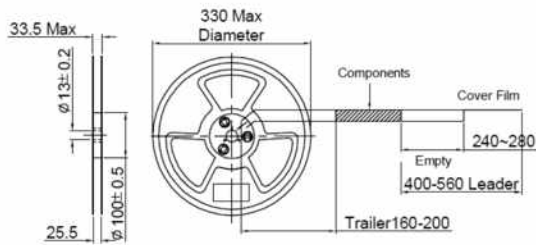
| | | | | |
|----------------------------------|------------|-------------------------------|----------|-------------|
| GREWUS | | dimensions without tolerance: | scale: | |
| Designed by: Ralf Hinnerichs | 11.03.2009 | part number: | index: | Date: |
| Released by: Ralf Hinnerichs | 11.03.2009 | BPE1305S-02A | A | 11.03.2009 |
| drawing number: 398838276 | | Buzzer | | Page 2 of 3 |

4. Packageing drawing

Dimensions of carrier tape



Dimensions of reel



Carton

Size: 38 x 28 x 37 cm

Smallest unit: reel

Quantity: 5000 pcs / carton

quantity smallest unit: 1000 pcs / reel

Weight:

further packageing information: 5 reels / carton

| | | | | |
|----------------------------------|------------|-------------------------------------|----------|-------------|
| GREWUS | | dimensions without tolerance: | scale: | |
| Designed by: Ralf Hinnerichs | 11.03.2009 | part number: BPE1305S-02A | index: | Date: |
| Released by: Ralf Hinnerichs | 11.03.2009 | | A | 11.03.2009 |
| drawing number: 398838276 | | Buzzer | | Page 3 of 3 |