

## M12 MALE ON REAR OF MSUD DOUBLE VALVE PLUG 11MM

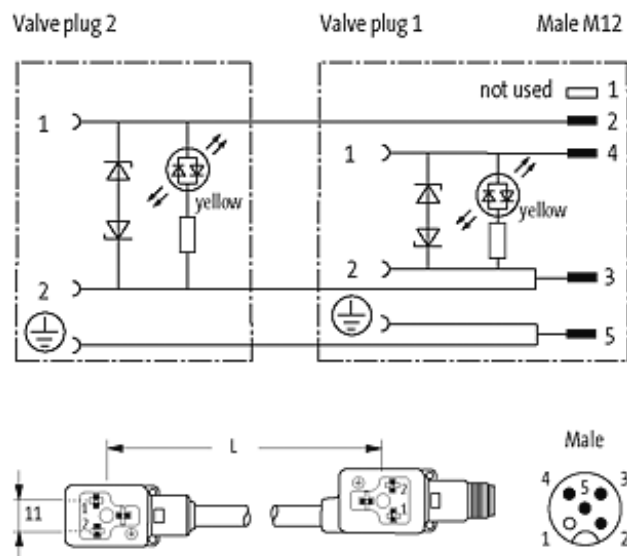
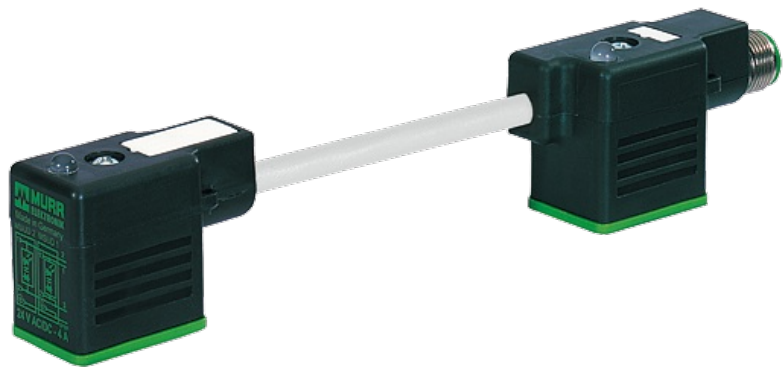
PUR 3X0.75 GRAY, 0m

Form BI (11 mm) industrial standard  
M12, 4-pole, connector at the rear  
LED and suppression  
Connection cable L = 200 mm

Plastic housings with good resistance against chemicals and oils. The resistance to aggressive media should be individually tested for your application. Further details on request.

### [Link to Product](#)

#### Illustration



Product may differ from Image

#### Approvals

**Form**

41841

**Technical Data**

|                               |  |
|-------------------------------|--|
| Operating voltage             | 24 V AC $\pm 20\%$ / DC $\pm 25\%$     |
| Operating current per contact | max. 4 A                               |
| Switch off peak               | max. 55 V                              |
| Switch off delay time         | max. 20 ms                             |
| LED display                   | (yellow)                               |
| Current consumption           | approx. 12 mA                          |
| Housing                       | Black plastic (gray on request)        |
| Locking of ports              | M3 (recommended torque 0.4 Nm)         |
| Protection                    | IP67 inserted and tightened (EN 60529) |

**Cables**

|                             |                                 |
|-----------------------------|---------------------------------|
| Cable number                | 226                             |
| No./diameter of wires       | 3 $\times$ 0.75 mm <sup>2</sup> |
| Wire isolation              | PVC (bk, num, gnye)             |
| C-track properties          | 2 Mio.                          |
| Jacket Color                | gray                            |
| Shore hardness outer jacket | 85 $\pm$ 5A                     |
| Material (jacket)           | PUR/PVC (UL/CSA)                |
| Outer diameter              | approx. 5.9 mm                  |
| Bend radius (fixed)         | 10 $\times$ outer $\varnothing$ |
| Bend radius (moving)        | 15 $\times$ outer $\varnothing$ |
| Temperature range (fixed)   | -30...+80 °C                    |
| Temperature range (mobile)  | -5...+80 °C                     |

**General data**

|                   |  |
|-------------------|--|
| Temperature range | -25...+85 °C, depending on cable quality |
|-------------------|--|

**Commercial data**

|                        |          |
|------------------------|----------|
| country of origin      | CZ       |
| customs tariff number  | 85444290 |
| minimum order quantity | 1        |