

PCB TERMINAL BLOCKS

PCB
TERMINAL
BLOCKS

INTER-
CONNECTION

FUSES &
FUSE-
HOLDERS

LEDs &
INDICATORS

MINIATURE
SWITCHES

LIMIT &
SAFETY
SWITCHES

CONTROL
PRODUCTS

INTERFACE
MODULES &
SUPPORTS

RELAY
BASES


DIN RAIL
ENCLOSURES

BATTERIES

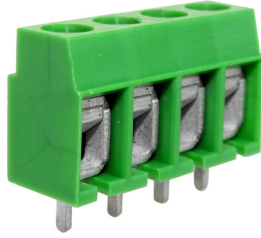
SOLAR
PANELS

TRANS-
FORMERS

5mm Pitch Commercial Low Profile Screw Terminal Blocks

- 2-12 pole solid block
- End stackable
- Moulded in green UL94-V0 flame retardant PA
- Wire protector terminals
- 0.5-4.0mm² (30-12AWG) solid cable
- 0.5-2.5mm² (30-12AWG) stranded cable
- Captive screws
- Anti solder wicking terminal
- Guided pin alignment
-  approved

CTB55VG



TYPE NO.	POLES	LENGTH
CTB55VG/2	2	10mm
CTB55VG/3	3	15mm
CTB55VG/4	4	20mm
CTB55VG/5	5	25mm
CTB55VG/6	6	30mm
CTB55VG/7	7	35mm
CTB55VG/8	8	40mm
CTB55VG/9	9	45mm
CTB55VG/10	10	50mm
CTB55VG/11	11	55mm
CTB55VG/12	12	60mm

SPECIFICATION

Rating	24A/250V
	UL=16A/300V, VDE&IMQ=24A/250V
Dielectric strength	≥2kV
Impulse withstand voltage	4kV
Working temperature	110°C
Moulding	UL94-V0 flame retardant PA
Pin/terminal	Tinned, nickel plated brass
Wire Protector	Tin plated phosphor bronze
Screw/torque	M2.5 steel zinc plated, 0.4Nm
Recommended PCB hole size	ø1.3mm

