



Part Number : [1731120342](#)

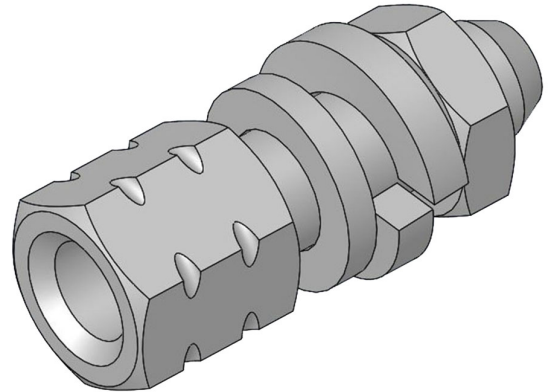
Product Description : FCT Female Screw Lock, M3 Inner and Outer Thread, 12.70mm Length, Tin-Plated Steel

Series Number : 173112

Status : Active

Product Category : D-Sub Accessories

Engineering Number : F-GSCH1/5-K128SN



Documents & Resources

Drawings

[Drawing 1731120342_sd.pdf](#)

Specifications

[Packaging Specification 1731120003-PK-000.pdf](#)

Product Environment Compliance

Compliance

GADSL/IMDS	Not Relevant
China RoHS	
EU ELV	Not Relevant
Low-Halogen Status	Not Reviewed per IEC 61249-2-21
REACH SVHC	Contains Lead per D(2023)3788-DC (14 Jun 2023)
EU RoHS	Compliant with Exemption 6(a)-I per EU 2015/863

[Multiple Part Product Compliance Statements](#)

- Eu RoHS
- REACH SVHC
- Low-Halogen

[Multiple Part Industry Compliance Documents](#)

- IPC 1752A Class C

- IPC 1752A Class D
- Molex Product Compliance Declaration
- IEC-62474
- chemSHERPA (xml)

EU RoHS Certificate of Compliance

Part Details

General

Status	Active
Category	D-Sub Accessories
Series	173112
Description	FCT Female Screw Lock, M3 Inner and Outer Thread, 12.70mm Length, Tin-Plated Steel
IP Rating	N/A
Product Family	FCT D-Sub Connectors
Product Name	FCT Products
UPC	191128099134

Physical

Accessory Type	Locking Mechanism
Material - Body	Steel
Net Weight	2.000/g
Packaging Type	Bag
Thread Size	M3 / M3
Thread Type	Standard