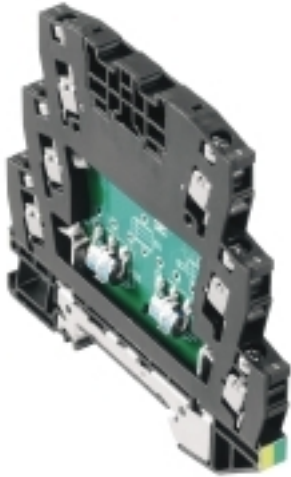


## VSSC VSSC6 GDT 24VAC/DC 10kA

**Weidmüller Interface GmbH & Co. KG**  
 Klingenbergstraße 16  
 D-32758 Detmold  
 Germany  
 Fon: +49 5231 14-0  
 Fax: +49 5231 14-292083  
 www.weidmueller.com



Similar to illustration



Überspannungsschutz mit Einzelkomponenten  
 Mit Gasableiter in Klemmenbauform  
 In der Klemmenbauform setzt man Gasableiter /  
 Funkenstrecken (GDT) ein. Sie sind für eine maximale  
 Gleichspannung zugelassen, die auf dem Bauelement  
 aufgedruckt ist. Jede Spannung, die größer als die  
 angegebene ist, wird sicher in ca. 10-100µs abgeleitet.  
 Gasableiter finden für größere Leistungen Verwendung.

### General ordering data

Type	VSSC6 GDT 24VAC/DC 10kA
Order No.	<a href="#">1064640000</a>
Version	Surge protection for instrumentation and control, 24 V, 34 V, 12 A, IEC 61643-21
GTIN (EAN)	4032248829958
Qty.	10 pc(s).

**VSSC**  
**VSSC6 GDT 24VAC/DC 10kA**

**Weidmüller Interface GmbH & Co. KG**  
 Klingenbergstraße 16  
 D-32758 Detmold  
 Germany  
 Fon: +49 5231 14-0  
 Fax: +49 5231 14-292083  
 www.weidmueller.com

**Technical data****Dimensions and weights**

Width	6.2 mm	Width (inches)	0.244 inch
Height	88.5 mm	Height (inches)	3.484 inch
Depth	81 mm	Depth (inches)	3.189 inch
Net weight	44.2 g		

**Temperatures**

Humidity	5...96 %	Operating temperature, max.	70 °C
Operating temperature, min.	-40 °C	Storage temperature, max.	80 °C
Storage temperature, min.	-40 °C	Operating temperature	-40 °C...70 °C
Storage temperature	-40 °C...80 °C		

**Probability of failure**

λges	10	MTTF	11,416 Jahre
PFH in 1*10 <sup>-9</sup> per hour	0	SFF	100 %
SIL in compliance with IEC 61508	3		

**Environmental Product Compliance**

REACH SVHC	Lead 7439-92-1
------------	----------------

**Rated data UL**

UL certificate	UL Zertifikat
----------------	---------------

**CSA protection data**

Gas group C	IIB	Gas group D	IIA
Gas groups A, B	IIC	Input current, max. I <sub>i</sub>	12 A
Input voltage, max. U <sub>i</sub>	42 V	Internal capacity, max. C <sub>i</sub>	0 nF
Internal inductance, max. L <sub>i</sub>	0 μH		

**General data**

Colour	black	Design	Terminal
Isolating function	No	Optical function display	No
Protection degree	IP20	Rail	TS 35
Segment	Measurement - Monitoring - Setting	UL 94 flammability rating	V-0
Version	Surge protection for measurement and control		

**Insulation coordination acc. to EN 50178**

Pollution severity	2	Surge voltage category	III
--------------------	---	------------------------	-----

**VSSC  
VSSC6 GDT 24VAC/DC 10kA**

**Weidmüller Interface GmbH & Co. KG**  
Klingenbergstraße 16  
D-32758 Detmold  
Germany  
Fon: +49 5231 14-0  
Fax: +49 5231 14-292083  
www.weidmueller.com

**Technical data**
**Rated data IEC / EN**

Capacitance	1.5 nF	Discharge current $I_{max}$ (8/20 $\mu$ s) wire-PE	10 kA
Discharge current $I_n$ (8/20 $\mu$ s) wire-PE	2.5 kA	Discharge current, max. (8/20 $\mu$ s)	20 kA
Lightning test current $I_{imp}$ (10/350 $\mu$ s)	1 kA	Lightning test current, $I_{imp}$ (10/350 $\mu$ s) Wire-PE	1 kA
Max. continuous voltage, $U_c$ (AC)	30 V	Max. continuous voltage, $U_c$ (DC)	42 V
Overload - failure mode	Modus 2	Protection level $U_p$ (typ.)	< 1000 V
Rated current $I_N$	12 A	Rated voltage (AC)	24 V
Rated voltage (DC)	34 V	Requirements category acc. to IEC 61643-21	C2, C3, D1
Standards	IEC 61643-21	Surge current-carrying capacity C2	2.5 kA 8/20 $\mu$ s 5 kV 1.2/50 $\mu$ s
Surge current-carrying capacity C3	50 A 10/1000 $\mu$ s	Surge current-carrying capacity D1	1 kA 10/350 $\mu$ s
Voltage type	AC/DC	Volume resistance	< 0.1 $\Omega$

**Further details of approvals**

GOST certificate GOST-Zertifikat

**Connection data**

Type of connection	Screw connection	Tightening torque, min.	0.5 Nm
Tightening torque, max.	0.8 Nm	Clamping range, min.	0.5 mm <sup>2</sup>
Clamping range, max.	4 mm <sup>2</sup>	Wire cross-section, solid, min.	0.5 mm <sup>2</sup>
Wire cross-section, solid, max.	6 mm <sup>2</sup>	Conductor cross-section, flexible, AEH (DIN 46228-1), min.	0.5 mm <sup>2</sup>
Conductor cross-section, flexible, AEH (DIN 46228-1), max.	4 mm <sup>2</sup>	Connection cross-section, stranded, min.	0.5 mm <sup>2</sup>
Connection cross-section, stranded, max.	4 mm <sup>2</sup>		

**Ratings IECEx/ATEX/cUL**

cUL certificate cUL Certificate

**Classifications**

ETIM 3.0	EC000943	ETIM 4.0	EC000941
ETIM 5.0	EC000943	ETIM 6.0	EC000943
UNSPSC	30-21-18-11	eClass 5.1	27-14-11-27
eClass 6.2	27-13-08-05	eClass 7.1	27-13-08-09
eClass 8.1	27-13-08-11	eClass 9.0	27-13-08-07
eClass 9.1	27-13-08-07		

**Approvals**

Approvals



ROHS Conform

**Data sheet****VSSC  
VSSC6 GDT 24VAC/DC 10kA**

**Weidmüller Interface GmbH & Co. KG**  
Klingenbergstraße 16  
D-32758 Detmold  
Germany  
Fon: +49 5231 14-0  
Fax: +49 5231 14-292083  
www.weidmueller.com

**Technical data****Downloads**

Approval/Certificate/Document of Conformity	<a href="#">SIL Paper</a> <a href="#">CE PAPER</a> <a href="#">Declaration of Conformity</a>
Brochure/Catalogue	<a href="#">CAT 4.4 ELECTR 16/17 EN</a>
Engineering Data	<a href="#">EPLAN, WSCAD</a>
Engineering Data	<a href="#">STEP</a>
User Documentation	<a href="#">Instruction sheet VSSC</a>

**Data sheet**

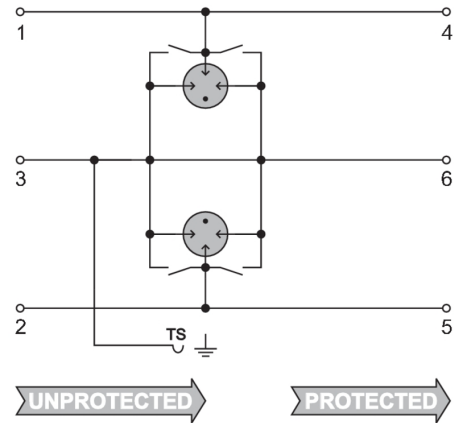
**VSSC  
VSSC6 GDT 24VAC/DC 10kA**

**Weidmüller Interface GmbH & Co. KG**  
 Klingenbergstraße 16  
 D-32758 Detmold  
 Germany  
 Fon: +49 5231 14-0  
 Fax: +49 5231 14-292083  
 www.weidmueller.com

**Drawings**



Similar to illustration



Circuit diagram