

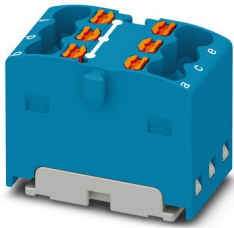
Distribution block - PTFIX 6X1,5 BU



3002761

<https://www.phoenixcontact.com/gb/products/3002761>

Please be informed that the data shown in this PDF document is generated from our Online Catalog. Please find the complete data in the user documentation. Our General Terms of Use for Downloads are valid.



Distribution block, the blocks can be bridged with one another via the conductor shaft, for corresponding plug-in bridges, see accessories, bridged internally, nom. voltage: 450 V, nominal current: 17.5 A, connection method: Push-in connection, cross section: 0.14 mm² - 2.5 mm², mounting type: for snapping onto a DIN rail adapter, Direct mounting with flange, Free-hanging, color: blue

Your advantages

- Convenient test options, thanks to test openings at every terminal point
- Space-saving potential distribution, thanks to compact micro potential distributors
- Flexible use, thanks to direct mounting with flange covers from accessories
- Space-saving, thanks to the compact design
- Clear arrangement thanks to marking of all terminal points

Commercial Data

Item number	3002761
Packing unit	20 pc
Minimum order quantity	20 pc
Sales Key	BEA113
Product Key	BEA113
Catalog Page	Page 429 (C-1-2019)
GTIN	4055626432434
Weight per Piece (including packing)	5.632 g
Weight per Piece (excluding packing)	5.6 g
Customs tariff number	85369010
Country of origin	PL

Distribution block - PTFIX 6X1,5 BU



3002761

<https://www.phoenixcontact.com/gb/products/3002761>

Technical Data

Notes

Notes on operation	the blocks can be bridged with one another via the conductor shaft, for corresponding plug-in bridges, see accessories
--------------------	------------------------------------------------------------------------------------------------------------------------

Product properties

Product type	Distributor terminal block
Number of connections	6
Number of rows	1
Potentials	1

Insulation characteristics

Overvoltage category	III
Degree of pollution	3

Electrical properties

Rated surge voltage	6 kV
Maximum power dissipation for nominal condition	0.56 W

Connection data

Number of connections per level	6
Nominal cross section	1.5 mm ²
Rated cross section AWG	14
Stripping length	8 mm ... 10 mm
Internal cylindrical gage	A1 / B1
Connection in acc. with standard	IEC 60998-2-2
Conductor cross section solid	0.14 mm ² ... 2.5 mm ²
Cross section AWG	26 ... 14 (converted acc. to IEC)
Conductor cross section flexible	0.14 mm ² ... 1.5 mm ²
Conductor cross section, flexible [AWG]	24 ... 14 (converted acc. to IEC)
Flexible conductor cross section flexible (ferrule, w/o plastic sleeve)	0.14 mm ² ... 1.5 mm ²
Flexible conductor cross section (ferrule with plastic sleeve)	0.14 mm ² ... 1.5 mm ²
Nominal current	17.5 A
Maximum load current	22 A
Maximum total current	26 A
Nominal voltage	450 V

Connection cross sections directly pluggable

Conductor cross section solid	0.34 mm ² ... 2.5 mm ²
Conductor cross section, solid [AWG]	26 ... 14 (converted acc. to IEC)
Flexible conductor cross section flexible (ferrule, w/o plastic sleeve)	0.34 mm ² ... 1.5 mm ²
Flexible conductor cross section (ferrule with plastic sleeve)	0.34 mm ² ... 1.5 mm ²

Distribution block - PTFIX 6X1,5 BU



3002761

<https://www.phoenixcontact.com/gb/products/3002761>

Dimensions

Width	12.5 mm
Height	17.7 mm
Length	21.6 mm

Material specifications

Color	blue
Flammability rating according to UL 94	V0
Insulating material group	I
Insulating material	PA
Static insulating material application in cold	-60 °C
Temperature index of insulation material (DIN EN 60216-1 (VDE 0304-21))	130 °C
Relative insulation material temperature index (Elec., UL 746 B)	130 °C
Fire protection for rail vehicles (DIN EN 45545-2) R22	HL 1 - HL 3
Fire protection for rail vehicles (DIN EN 45545-2) R23	HL 1 - HL 3
Fire protection for rail vehicles (DIN EN 45545-2) R24	HL 1 - HL 3
Fire protection for rail vehicles (DIN EN 45545-2) R26	HL 1 - HL 3
Calorimetric heat release NFPA 130 (ASTM E 1354)	28 MJ/kg
Surface flammability NFPA 130 (ASTM E 162)	passed
Specific optical density of smoke NFPA 130 (ASTM E 662)	passed
Smoke gas toxicity NFPA 130 (SMP 800C)	passed

Mechanical properties

Mechanical data

Open side panel	No
-----------------	----

Mechanical tests

Attachment on the carrier

DIN rail/fixing support	NS 35/NS 15
Result	Test passed
Note	<p>When aligning several blocks, it is recommended to either place a DIN rail adapter underneath the connection point or a flange element between the blocks.</p> <p>For versions with 6 or 7 connections, it is enough to place one DIN rail adapter centrally per block and place flange elements after every other block.</p> <p>When using the DIN rail adapter PTFIX-NS35, an aligned block must not protrude by more than a half.</p>

Environmental and real-life conditions

Aging

Temperature cycles	192
--------------------	-----

Distribution block - PTFIX 6X1,5 BU



3002761

<https://www.phoenixcontact.com/gb/products/3002761>

Needle-flame test

Time of exposure	30 s
Result	Test passed

Ambient conditions

Ambient temperature (operation)	-60 °C ... 105 °C (max. short-term operating temperature RTI Elec.)
Ambient temperature (storage/transport)	-25 °C ... 60 °C (for a short time, not exceeding 24 h, -60 °C to +70 °C)
Ambient temperature (assembly)	-5 °C ... 70 °C
Ambient temperature (actuation)	-5 °C ... 70 °C
Permissible humidity (storage/transport)	30 % ... 70 %

Standards and regulations

Connection in acc. with standard	IEC 60998-2-2
----------------------------------	---------------

Mounting

Mounting type	for snapping onto a DIN rail adapter
	Direct mounting with flange
	Free-hanging

Distribution block - PTFIX 6X1,5 BU

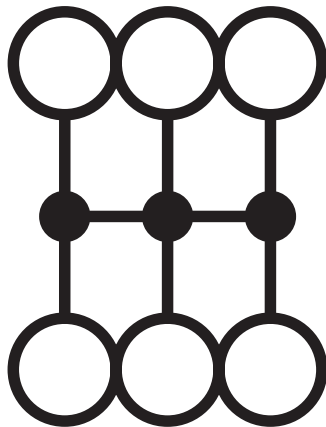
3002761

<https://www.phoenixcontact.com/gb/products/3002761>



Drawings

Circuit diagram



Distribution block - PTFIX 6X1,5 BU



3002761

<https://www.phoenixcontact.com/gb/products/3002761>

Approvals

DNV Approval ID: TAE00002TT				
	Nominal Voltage U_N	Nominal Current I_N	Cross Section AWG	Cross Section mm^2
	500 V	24 A	-	-

CSA Approval ID: 13631				
	Nominal Voltage U_N	Nominal Current I_N	Cross Section AWG	Cross Section mm^2
Use group B	300 V	20 A	26 - 12	-
Use group C	150 V	20 A	26 - 12	-
Use group D	300 V	10 A	26 - 12	-

CB Scheme Approval ID: DE1-63083				
	Nominal Voltage U_N	Nominal Current I_N	Cross Section AWG	Cross Section mm^2
	450 V	17.5 A	-	- 1.5

EAC Approval ID: RU C-DE.BL08.B.00644				
-------------------------------------------------	--	--	--	--

LR Approval ID: LR2002627TA				
---------------------------------------	--	--	--	--

BV Approval ID: 59146/A0 BV				
---------------------------------------	--	--	--	--

VDE Zeichengenehmigung Approval ID: 40047798				
--------------------------------------------------------	--	--	--	--

cULus Recognized Approval ID: E60425				
	Nominal Voltage U_N	Nominal Current I_N	Cross Section AWG	Cross Section mm^2
Use group B	300 V	20 A	26 - 12	-

Distribution block - PTFIX 6X1,5 BU



3002761

<https://www.phoenixcontact.com/gb/products/3002761>

Use group C	150 V	20 A	26 - 12	-
Use group F	500 V	20 A	26 - 12	-
Use group D	300 V	10 A	26 - 12	-

Distribution block - PTFIX 6X1,5 BU



3002761

<https://www.phoenixcontact.com/gb/products/3002761>

Classifications

ECLASS

ECLASS-9.0	27141120
ECLASS-10.0.1	27141120
ECLASS-11.0	27141120

ETIM

ETIM 8.0	EC000897
----------	----------

UNSPSC

UNSPSC 21.0	39121400
-------------	----------

Distribution block - PTFIX 6X1,5 BU



3002761

<https://www.phoenixcontact.com/gb/products/3002761>

Environmental Product Compliance


China RoHS	Environmentally friendly use period: unlimited = EFUP-e
	No hazardous substances above threshold values

Distribution block - PTFIX 6X1,5 BU

3002761

<https://www.phoenixcontact.com/gb/products/3002761>

Accessories

 Note: Applying some accessories below might limit this product.

Plug-in bridge

Plug-in bridge - FBS 2-4 - 3030116

<https://www.phoenixcontact.com/gb/products/3030116>



Plug-in bridge, pitch: 4.2 mm, color: red

 Max. current carrying capacity: 17.5 A


Plug-in bridge

Plug-in bridge - FBS 2-4 GY - 3030118

<https://www.phoenixcontact.com/gb/products/3030118>



Plug-in bridge, pitch: 4.2 mm, color: gray

 Max. current carrying capacity: 17.5 A

Distribution block - PTFIX 6X1,5 BU

3002761

<https://www.phoenixcontact.com/gb/products/3002761>


Plug-in bridge

Plug-in bridge - FBS 2-4 BU - 3030117

<https://www.phoenixcontact.com/gb/products/3030117>



Plug-in bridge, pitch: 4.2 mm, color: blue

 Max. current carrying capacity: 17.5 A

Flange

Flange - PTFIX 1,5-F - 1049503

<https://www.phoenixcontact.com/gb/products/1049503>



Flange, with screw-on fixing, mounting type: Screw mounting, color: gray

Distribution block - PTFIX 6X1,5 BU

3002761

<https://www.phoenixcontact.com/gb/products/3002761>

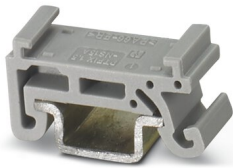


DIN rail adapter

DIN rail adapter - PTFIX 1,5-NS15A - 1049500

<https://www.phoenixcontact.com/gb/products/1049500>

DIN rail adapter, length: 21.6 mm, width: 8 mm, height: 10.85 mm



DIN rail adapter

DIN rail adapter - PTFIX 1,5-NS35 - 1049497

<https://www.phoenixcontact.com/gb/products/1049497>

DIN rail adapter, length: 58.1 mm, width: 21.6 mm, height: 11 mm



Distribution block - PTFIX 6X1,5 BU

3002761

<https://www.phoenixcontact.com/gb/products/3002761>

DIN rail adapter

DIN rail adapter - PTFIX 1,5-NS35AD - 1049498

<https://www.phoenixcontact.com/gb/products/1049498>

DIN rail adapter, for NS 35 for accommodating two rows of PTFIX 1,5 distribution blocks, length: 44.4 mm, width: 8 mm, height: 10.9 mm



Mounting adapter

Mounting adapter - PTFIX 1,5-RZF - 1050613

<https://www.phoenixcontact.com/gb/products/1050613>

Adapter for direct mounting



Distribution block - PTFIX 6X1,5 BU

3002761

<https://www.phoenixcontact.com/gb/products/3002761>



Accessories

Accessories - MPS-MT 1-S4-B RD - 1982800

<https://www.phoenixcontact.com/gb/products/1982800>

Test plug terminal block, Accessories



Insulating sleeve

Insulating sleeve - ISH 1,5/0,2 - 3206131

<https://www.phoenixcontact.com/gb/products/3206131>

Insulating sleeve, color: white



Distribution block - PTFIX 6X1,5 BU

3002761

<https://www.phoenixcontact.com/gb/products/3002761>

Insulating sleeve

Insulating sleeve - ISH 1,5/0,5 - 3031034

<https://www.phoenixcontact.com/gb/products/3031034>

Insulating sleeve, color: gray



Marker card

Marker card - SK 3,8 REEL P4,15 WH CUS - 0825990

<https://www.phoenixcontact.com/gb/products/0825990>

Marker card, can be ordered: by card, white, labeled according to customer specifications, mounting type: adhesive, for terminal block width: 4.15 mm, lettering field size: continuous x 3.8 mm



Distribution block - PTFIX 6X1,5 BU

3002761

<https://www.phoenixcontact.com/gb/products/3002761>

Marker strip

Marker strip - TML (EX3,8)R - 0801837

<https://www.phoenixcontact.com/gb/products/0801837>



Marker strip, Roll, white, unlabeled, can be labeled with: THERMOMARK E.300 (D)/600 (D), THERMOMARK ROLL 2.0, THERMOMARK ROLL, THERMOMARK ROLL X1, THERMOMARK ROLLMASTER 300/600, THERMOMARK X1.2, mounting type: adhesive, for terminal block width: 30000 mm, lettering field size: 30000 x 3.8 mm, Number of individual labels: 12

Marker strip

Marker strip - TML (104X3,8)R - 0801833

<https://www.phoenixcontact.com/gb/products/0801833>



Marker strip, Roll, white, unlabeled, can be labeled with: THERMOMARK E.300 (D)/600 (D), THERMOMARK ROLL 2.0, THERMOMARK ROLL, THERMOMARK ROLL X1, THERMOMARK ROLLMASTER 300/600, THERMOMARK X1.2, mounting type: adhesive, for terminal block width: 104 mm, lettering field size: 104 x 3.8 mm, Number of individual labels: 2500

Distribution block - PTFIX 6X1,5 BU

3002761

<https://www.phoenixcontact.com/gb/products/3002761>

Marker strip

Marker strip - TML (104X2,8)R - 0801832

<https://www.phoenixcontact.com/gb/products/0801832>



Marker strip, Roll, white, unlabeled, can be labeled with: THERMOMARK E.300 (D)/600 (D), THERMOMARK ROLL 2.0, THERMOMARK ROLL, THERMOMARK ROLL X1, THERMOMARK ROLLMASTER 300/600, THERMOMARK X1.2, mounting type: adhesive, for terminal block width: 104 mm, lettering field size: 104 x 2.8 mm, Number of individual labels: 2500

Marker strip

Marker strip - TML (EX2,8)R - 0801836

<https://www.phoenixcontact.com/gb/products/0801836>



Marker strip, Roll, white, unlabeled, can be labeled with: THERMOMARK E.300 (D)/600 (D), THERMOMARK ROLL 2.0, THERMOMARK ROLL, THERMOMARK ROLL X1, THERMOMARK ROLLMASTER 300/600, THERMOMARK X1.2, mounting type: adhesive, for terminal block width: 30000 mm, lettering field size: 30000 x 2.8 mm, Number of individual labels: 14

Distribution block - PTFIX 6X1,5 BU

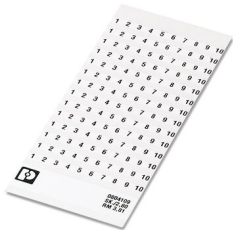
3002761

<https://www.phoenixcontact.com/gb/products/3002761>

Marker card

Marker card - SK 2,8 REEL P4,15 WH CUS - 8199987

<https://www.phoenixcontact.com/gb/products/8199987>



Marker card, can be ordered: by card, white, labeled according to customer specifications, mounting type: adhesive, for terminal block width: 4.15 mm, lettering field size: continuous x 2.8 mm

Marker for terminal blocks

Marker for terminal blocks - US-TML (104X3,8) - 0830768

<https://www.phoenixcontact.com/gb/products/0830768>



Marker for terminal blocks, Card, white, unlabeled, can be labeled with: BLUEMARK ID COLOR, BLUEMARK ID, THERMOMARK PRIME, THERMOMARK CARD 2.0, THERMOMARK CARD, mounting type: adhesive, lettering field size: 104 x 3.8 mm, Number of individual labels: 22

Distribution block - PTFIX 6X1,5 BU



3002761

<https://www.phoenixcontact.com/gb/products/3002761>

Marker for terminal blocks

Marker for terminal blocks - US-TML (104X2,8) - 0830767

<https://www.phoenixcontact.com/gb/products/0830767>



Marker for terminal blocks, Card, white, unlabeled, can be labeled with: BLUEMARK ID COLOR, BLUEMARK ID, THERMOMARK PRIME, THERMOMARK CARD 2.0, THERMOMARK CARD, mounting type: adhesive, lettering field size: 104 x 2.8 mm, Number of individual labels: 26

Marker card

Marker card - SK U/3,8 WH:UNBEDRUCKT - 0803906

<https://www.phoenixcontact.com/gb/products/0803906>



Marker card, Sheet, white, unlabeled, can be labeled with: PLOTMARK, CMS-P1-PLOTTER, Office printing systems, mounting type: adhesive, for terminal block width: 210 mm, lettering field size: 186 x 3.8 mm, Number of individual labels: 1440

Distribution block - PTFIX 6X1,5 BU



3002761

<https://www.phoenixcontact.com/gb/products/3002761>

Marker card

Marker card - SK U/2,8 WH:UNBEDRUCKT - 0803883

<https://www.phoenixcontact.com/gb/products/0803883>



Marker card, Sheet, white, unlabeled, can be labeled with: PLOTMARK, CMS-P1-PLOTTER, Office printing systems, mounting type: adhesive, for terminal block width: 210 mm, lettering field size: 186 x 2.8 mm, Number of individual labels: 3600

Label

Label - MM-TML (EX3,8)R C1 WH/BK - 1092026

<https://www.phoenixcontact.com/gb/products/1092026>



Label, Roll, white/black, unlabeled, can be labeled with: THERMOFOX, THERMOMARK GO, THERMOMARK GO.K, mounting type: adhesive, lettering field size: continuous x 2.8 mm

Phoenix Contact 2022 © - all rights reserved

<https://www.phoenixcontact.com>

PHOENIX CONTACT Ltd

Halesfield 13, Telford

Shropshire, TF7 4PG

01952 681700

info@phoenixcontact.co.uk